



# POMPE ROTOMECC

<b>RS 2022M-31.6</b>	
<b>DN 200</b>	<b>960 rpm</b>

Pompe sommergibili con girante arretrata a vortice  
*Submersible pumps with vortex impeller*  
*Electropompes submersibles avec roue vortex*



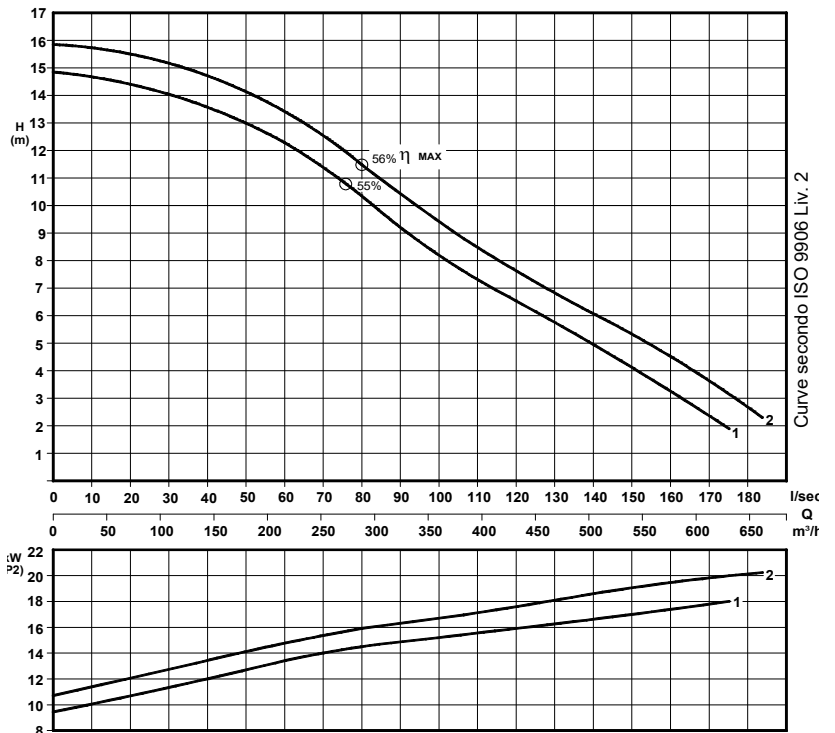
CURVA - Curve - Courbe		POMPA Pump Pompe		GIRI / Min - RPM - Tours/min.	POTENZA RESA NOMINALE Rated power Puissance nominale (P <sub>n</sub> )	ASSORBIMENTO NOMINALE Rated current Intensité nominale 400 V.	FATTORE DI POTENZA Power factor Facteur de puissance	TENSIONE - Voltage	CAVO - Cable	SONDE TERMICHE Thermal control - Thermosondes	SENSORE INFILTRAZIONE Moisture sensor Detecteur de infiltration	PESO - Weight - Poids	INSTALLAZIONE - Installation F = FISSA - Fixed - Fixe M = MOBILE - Mobile - Portable	
N°					kW	A	Cos. φ	3 ~ 50 Hz	H07RNF 10m			Kg	F	M
1	RS 2022M/6 - 3365K11	960	22	46	0,81	400/700 V.	(2) 4G6 + (1) 4G1,5	●	○	460	○	○		
2	RS 2022M/6 - 3374K11													

● Di serie - Standard

○ A richiesta - On request - A la demande



**PASSAGGIO LIBERO**  
*Free passage - Section de passage*  
**110 mm**



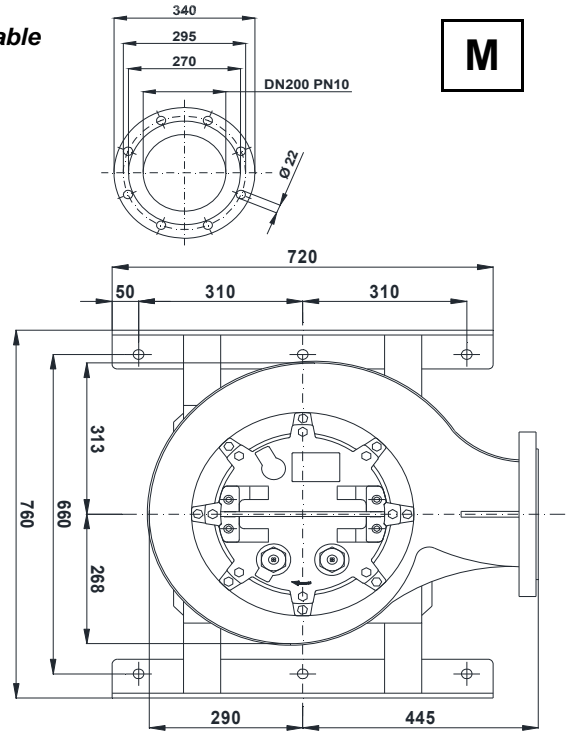
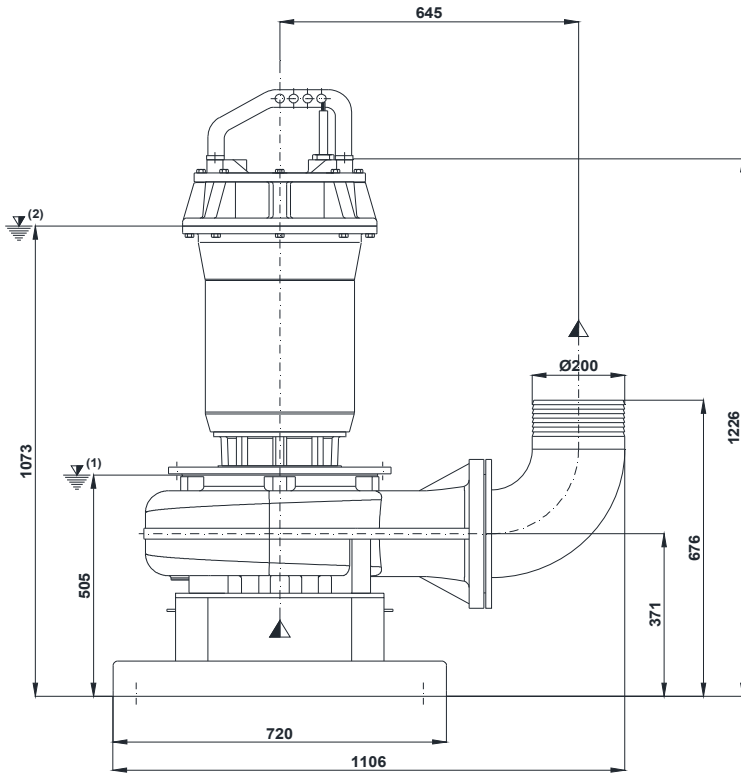
P<sub>2</sub> - Potenza resa - Shaft power - Puissance sur arbre

COSTRUZIONE - Materials - Matériaux		
Fusioni principali parts	Principal Parts principal	Ghisa Cast iron - Fonte GG 25
Girante - Roue	Impeller	Ghisa Cast iron - Fonte GS 500
Albero - Shaft - Arbre		AISI 420
Viteria - Screws - Vis		AISI 304
Motore - Motor - Moteur : IP68		
Classe isolamento - Insulating class : F		

### TENUTE MECCANICHE - Mechanical seals - Garniture mécanique

Doppia tenuta meccanica in bagno d'olio - Double mechanical seals in oil bath - Double garniture mécanique en chambre d'huile  
 Superiore - Upper - Superieur: Carburo di silicio - Silicon carbide  
 Inferiore - Lower - Inferieur: Carburo di silicio - Silicon carbide  
 Max. temperatura liquido: 40°C - Max liquid temp. 40°C  
 Max profondità di installazione - Max installation depth  
 Max profondità d'installazione = 20m.

**INSTALLAZIONE MOBILE - *Mobile installation - Installation portable***



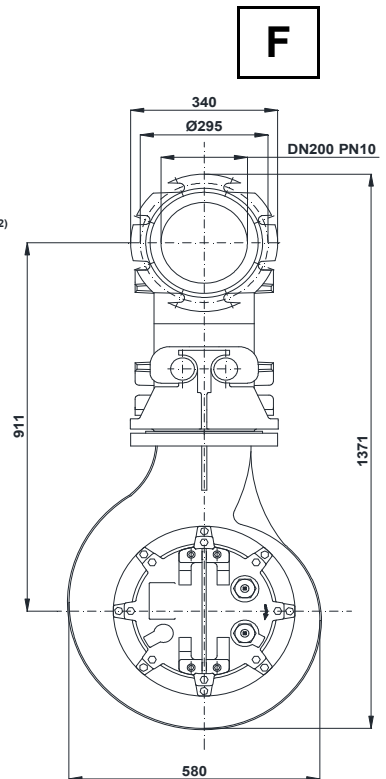
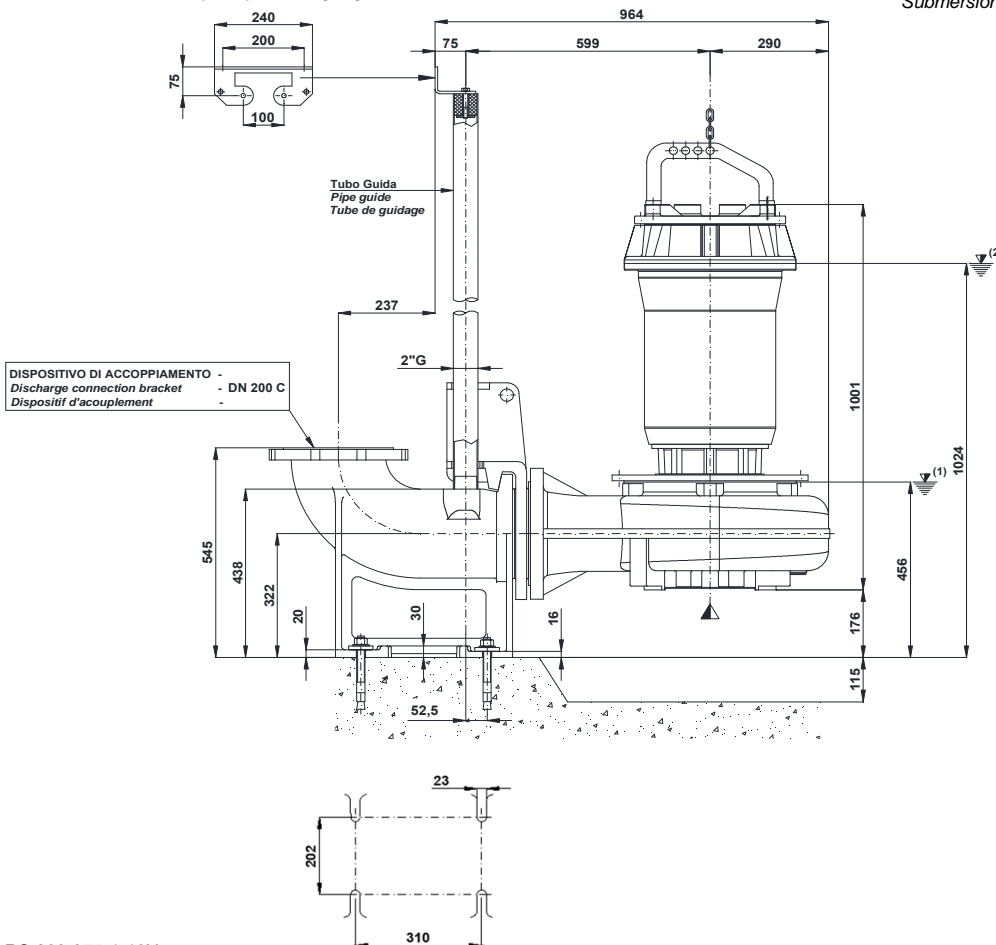
**M**

(1) Livello minimo di arresto per funzionamento automatico.  
 Lowest shut-of level for automatic control.  
 Point d'arrêt plus bas pour service automatiques.

**INSTALLAZIONE FISSA - *Fixed installation - Installation fixe***

Staffa fissaggio tubi guida  
 Upper guide rails bracket  
 Etrier supérieur pour tube de guidage

(2) Sommergenza minima per funzionamento continuo.  
 Minimum covering level for continuous service.  
 Submersion minimal pour service continu.



**F**

RS 200-375-1-19X



UNI EN ISO 9001 - 2015

Con riserva di variazioni tecniche e costruttive senza preavviso.

With reserve of technical and constructive variations without warning. Avec réserve de variations techniques et constructives sans préavis

**POMPE ROTOMECC s.r.l.** - 20063 CERNUSCO SUL NAVIGLIO (MI) - ITALY - Via Ponchielli, 1

Tel. +39.02.9211.0205 - +39.02.9233.0399 Fax +39.02.9211.0630 Sito Internet: www.pomperotomec.it E-mail: sales@pomperotomec.it

Pompe sommergibili con girante arretrata a vortice  
*Submersible pumps with vortex impeller*  
*Electropompes submersibles avec roue vortex*



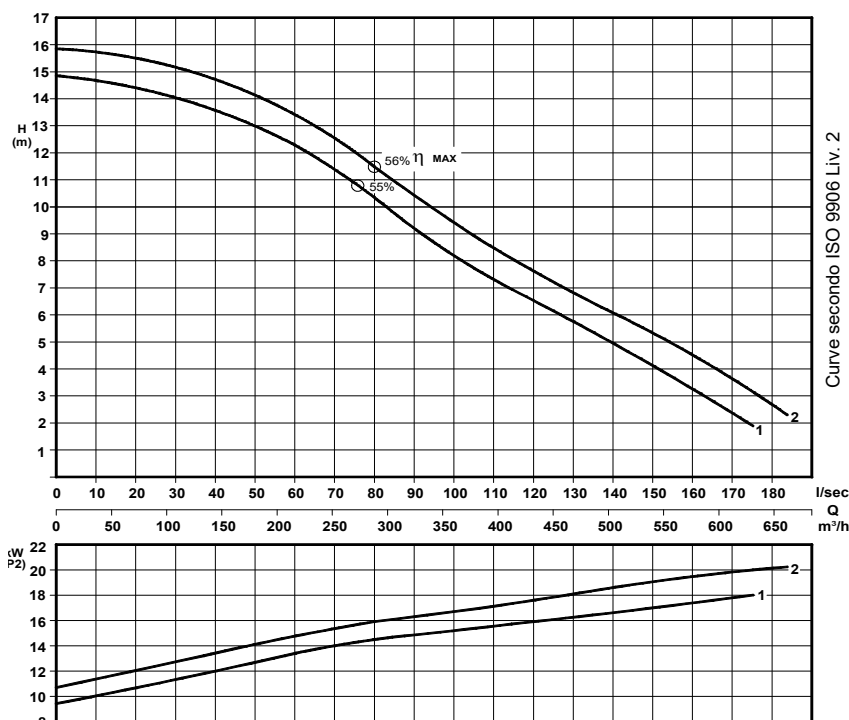
CURVA - Curve - Courbe		POMPA Pump Pompe	GIRI/Min - RPM - Tours/min.	POTENZA RESA NOMINALE Rated power Puissance nominale (P <sub>r</sub> )	ASSORBIMENTO NOMINALE Rated current Intensité nominale	FATTORE DI POTENZA Power factor Facteur de puissance	TENSIONE - Voltage	CAVO - Cable	SONDE TERMICHE Thermal control - Thermosondes	SENSORE INFILTRAZIONE Moisture sensor Détecteur de infiltration	CAMICIA DI RAFFREDD. cooling jacket chemise de refroidissement	PESO - Weight - Poids	INSTALLAZIONE - Installation F = FISSA - Fixed - Fixe M = MOBILE - Mobile - Portable T = CAMERA SECCA - Dry pit - Chambre sèche		
N°				kW	A	Cos. φ	3 ~ 50 Hz	H07RNF 10m				Kg	F	M	T
1	RS 2022/6 - 3365K11	960	22	45	0,91	400/700 V.	(2) 4G6 + (1) 4G1,5	●	●	○ *	580	○	○	○	
2	RS 2022/6 - 3374K11														

● Di serie - Standard      ○ A richiesta - On request - A la demande

\* Sistema di raffreddamento con circolazione forzata di liquido refrigerante - Cooling system with forced circulation of cooling liquid  
 Système de refroidissement à circulation forcée du liquide réfrigérant



**PASSAGGIO LIBERO**  
*Free passage - Section de passage*  
**110 mm**

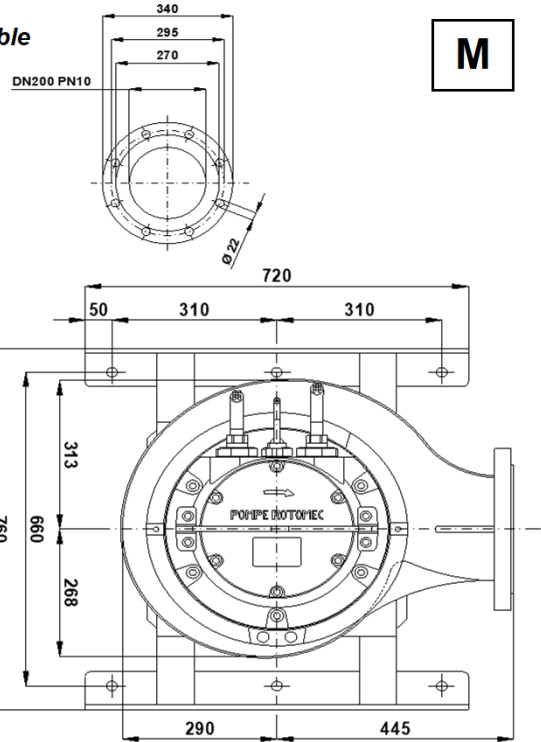
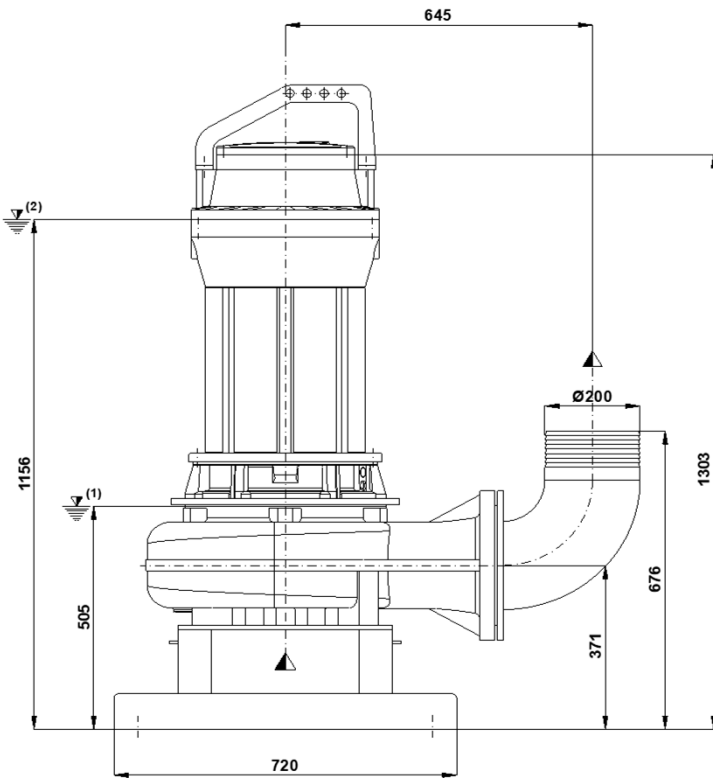


P<sub>2</sub> - Potenza resa - Shaft power - Puissance sur arbre

COSTRUZIONE - Materials - Matériaux	
Fusioni principali Principal parts Parts principal	Ghisa Cast iron - Fonte GG 25
Girante Impeller - Roue	Ghisa Cast iron - Fonte GS 500
Albero - Shaft - Arbre	AISI 420
Viteria - Screws - Vis	AISI 304
Motore - Motor - Moteur : IP68 - Eff. (IE3)	
Classe isolamento - Insulating class : F	

TENUTE MECCANICHE - Mechanical seals - Garniture mécanique
Doppia tenuta meccanica in bagno d'olio - Double mechanical seals in oil bath - Double garniture mécanique en chambre d'huile Superiore - Upper - Inferiore - Lower - Inferieur: SIC/SIC Carburo di silicio - Silicon carbide
Max. temperatura liquido: 40°C - Max liquid temp. 40°C
Max profondità di installazione - Max installation depth Max profondità d'installazione = 20m.

**INSTALLAZIONE MOBILE - Mobile installation - Installation portable**

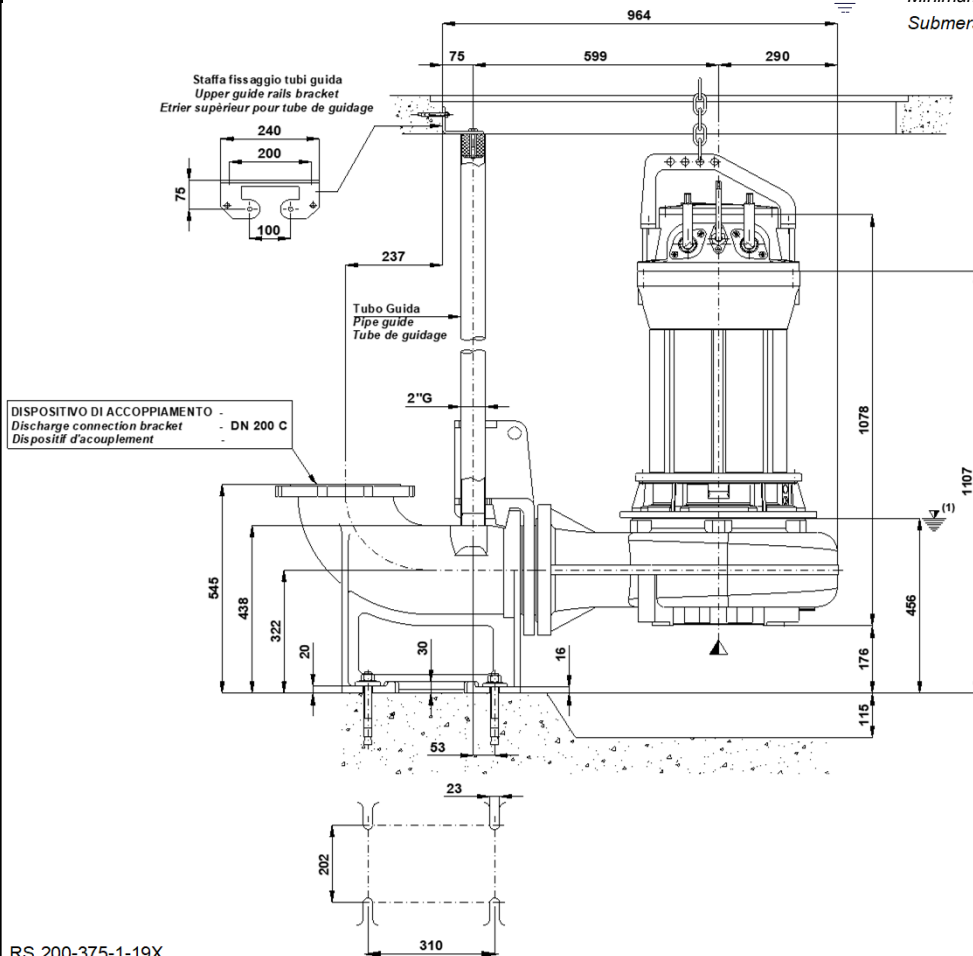


**M**

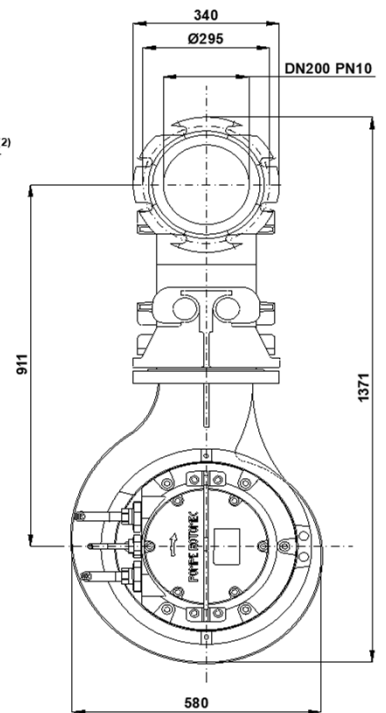
(1) Livello minimo di arresto per funzionamento automatico.  
 Lowest shut-of level for automatic control.  
 Point d'arrêt plus bas pour service automatiques.

**INSTALLAZIONE FISSA - Fixed installation - Installation fixe**

(2) Sommergenza minima per funzionamento continuo.  
 Minimum covering level for continuous service.  
 Submersion minimal pour service continu.



**F**



UNI EN ISO 9001 - 2015

RS 200-375-1-19X

Con riserva di variazioni tecniche e costruttive senza preavviso.

With reserve of technical and constructive variations without warning. Avec réserve de variations techniques et constructives sans préavis

**POMPE ROTOMECC srl** - 20063 CERNUSCO SUL NAVIGLIO (MI) - ITALY - Via Ponchielli, 1

Tel.+39.02.9211.0205 - +39.02.9233.0399 Fax +39.02.9211.0630 Sito Internet: www.pomperotomec.it E-mail: sales@pomperotomec.it