



POMPE ROTOMECC

BT 1006-10.2

DN 100

2900 rpm

Pompe sommergibili con girante bicanale aperta e diffusore autopulente
Submersible pumps with 2 channel open impeller and self-cleaning diffuser
 Pompes submersibles avec roue à 2 canaux ouvert et anneau autonettoyant

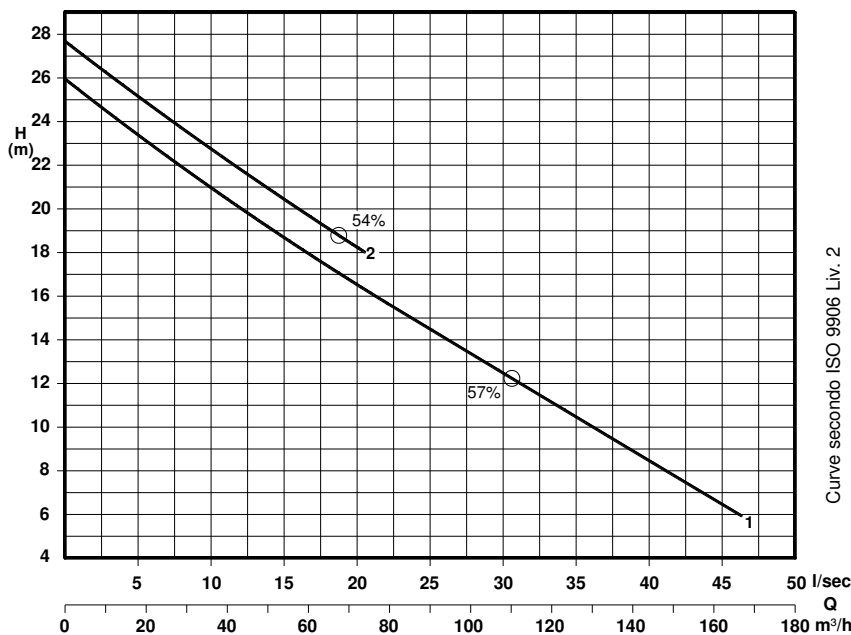
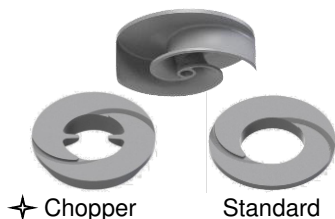


N°	CURVA - Curve - Courbe	POMPA Pump Pompe	GIRI /Min - RPM. - Tours/min.	POTENZA RESA NOMINALE Rated power Puissance nominale (P ₂)	ASSORBIMENTO NOMINALE Rated current Intensité nominale 400 V.	FATTORE DI POTENZA Power factor Facteur de puissance	TENSIONE - Voltage	CAVO - Cable	SONDE TERMICHE Thermal control Thermosondes	SENSORE INFILTRAZIONE Moisture sensor Detecteur de infiltration	PESO - Weight - Poids	INSTALLAZIONE - Installation F = FISSA - Fixed - Fixe M = MOBILE - Mobile -
1	BT 1006/2 - 1150	2900	6,7	14,5	0,82	3~ 50 Hz	400 V.	H07RNF 10m	●	○	113	○
2	BT 1006/2 - 1156							(1) 4G2,5 ● (1) 10G2,5 ■	○	○		

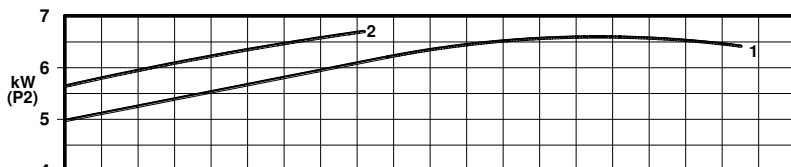
● Di serie - Standard

■ Con protezioni - With protections - Avec sondes

○ A richiesta - On request - A la demande



Curve secondo ISO 9906 Liv. 2



P₂ - Potenza resa - Shaft power - Puissance sur arbre

✦ Versione chopper con diffusore a taglienti e girante induriti
Chopper version with cutting diffuser and impeller hardened
 Version chopper avec anneau tranchant et roue durci

COSTRUZIONE - Materials - Matériaux	
Fusioni principali Principal parts Parts principal	Ghisa Cast iron - Fonte GG 25
Girante e diffusore Impeller and diffuser Roue et anneau	Ghisa Cast iron - Fonte GS 500
Albero - Shaft - Arbre	AISI 420
Viteria - Screws - Vis	AISI 304
Motore - Motor - Moteur : IP68	
Classe isolamento - Insulating class : F	

TENUTE MECCANICHE - Mechanical seals - Garniture mécanique

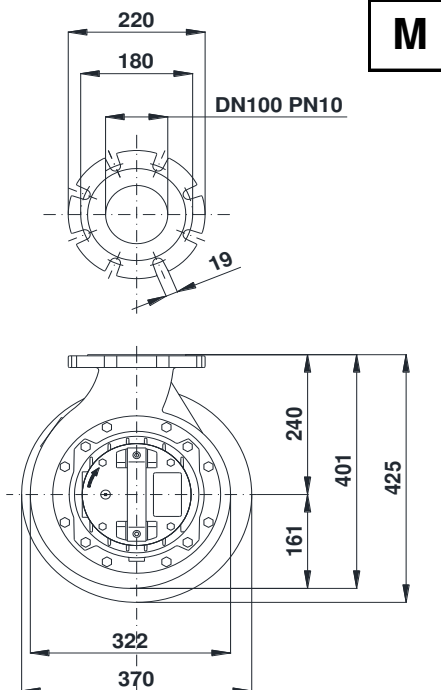
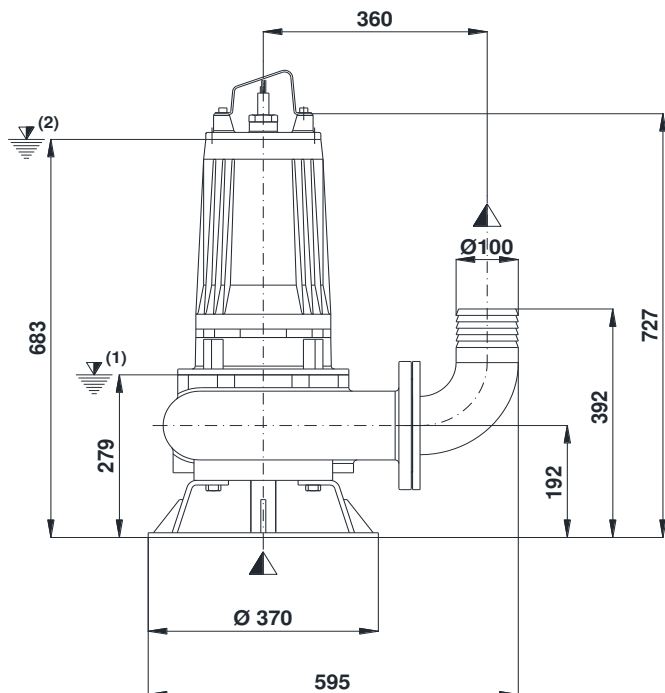
Doppia tenuta meccanica in bagno d'olio - Double mechanical seals in oil bath - Double garniture mécanique en chambre d'huile
 Superiore - Upper - Supérieur : Grafite/Allumina - Graphite/Alumina
 Inferiore - Lower - Inferieur : Carburo di silicio - Silicon carbide

Max. temperatura liquido: 40°C - Max liquid temp. 40°C

Max profondità di installazione - Max installation depth

Max profondità d'installazione = 20m.

INSTALLAZIONE MOBILE - *Mobile installation - Installation portable*

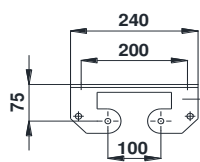


M

(1) Livello minimo di arresto per funzionamento automatico.
 Lowest shut-of level for automatic control.
 Point d'arrêt plus bas pour service automatiques.

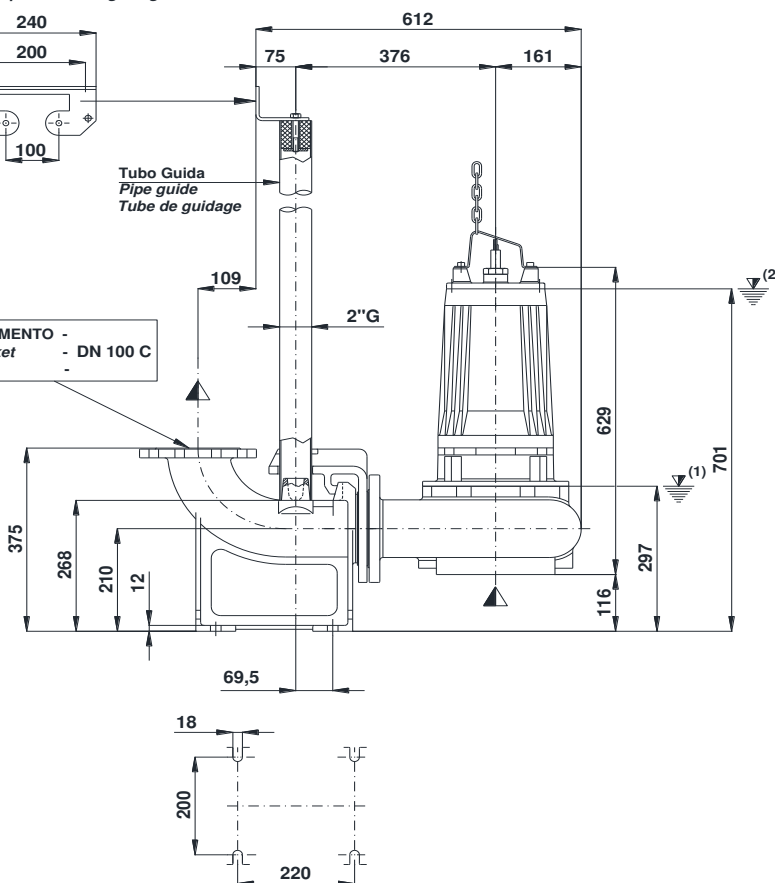
INSTALLAZIONE FISSA - *Fixed installation - Installation fixe*

Staffa fissaggio tubi guida
 Upper guide rails bracket
 Etrier supérieur pour tube de guidage



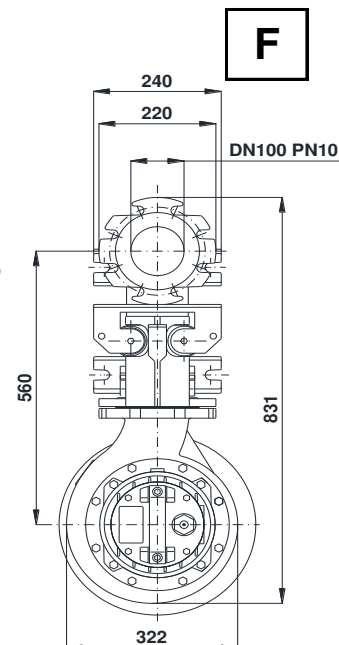
Tubo Guida
 Pipe guide
 Tube de guidage

DISPOSITIVO DI ACCOPPIAMENTO -
 Discharge connection bracket - DN 100 C
 Dispositif d'acouplement



(2) Sommergenza minima per funzionamento continuo.
 Minimum covering level for continuous service.
 Submersion minimal pour service continuu.

F





POMPE ROTOMECH

BT 1009-11.2

DN 100

2900 rpm

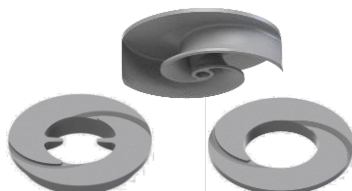
Pompe sommergibili con girante bicanale aperta e diffusore autopulente
Submersible pumps with 2 channel open impeller and self-cleaning diffuser
 Pompes submersibles avec roue à 2 canaux ouvert et anneau autonettoyant



N°	CURVA - Curve - Courbe	POMPA Pump Pompe	GIRI /Min - RPM. - Tours/min.	POTENZA RESA NOMINALE Rated power Puissance nominale (P ₂)	ASSORBIMENTO NOMINALE Rated current Intensité nominale 400 V.	FATTORE DI POTENZA Power factor Facteur de puissance	TENSIONE - Voltage	CAVO - Cable	SONDE TERMICHE Thermal control Thermosondes	SENSORE INFILTRAZIONE Moisture sensor Detecteur de infiltration	PESO - Weight - Poids	INSTALLAZIONE - Installation F = FISSA - Fixed - Fixe M = MOBILE - Mobile - Portable	
1	BT 1009/2 - 1164	2900	9,8	21	0,82	3~ 50 Hz	400/700 V.	H07RNF 10m (1) 10G2,5	●	○	Kg	F	M
2	BT 1009/2 - 1170												

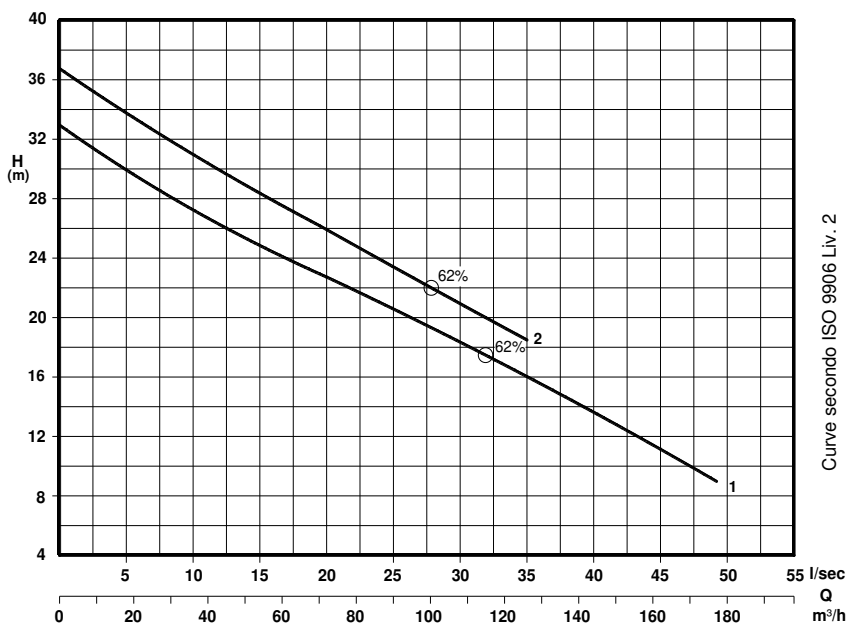
● Di serie - Standard

○ A richiesta - On request - A la demande

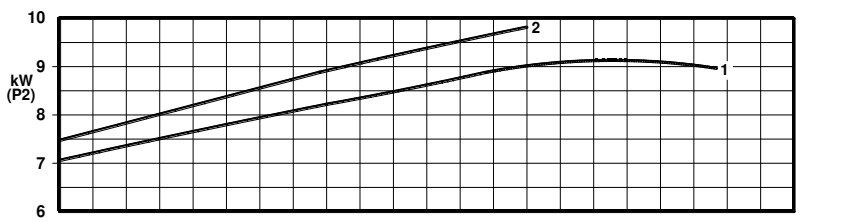


✦ Chopper

Standard



Curve secondo ISO 9906 Liv. 2

P₂ - Potenza resa - Shaft power - Puissance sur arbre

✦ Versione chopper con diffusore a taglienti e girante induriti
Chopper version with cutting diffuser and impeller hardened
 Version chopper avec anneau tranchant et roue durci

COSTRUZIONE - Materials - Matériaux	
Fusioni principali Principal parts Parts principal	Ghisa Cast iron - Fonte GG 25
Girante e diffusore Impeller and diffuser Roue et anneau	Ghisa Cast iron - Fonte GS 500
Albero - Shaft - Arbre	AISI 420
Viteria - Screws - Vis	AISI 304
Motore - Motor - Moteur : IP68	
Classe isolamento - Insulating class : F	

TENUTE MECCANICHE - Mechanical seals - Garniture mécanique

Doppia tenuta meccanica in bagno d'olio - Double mechanical seals in oil bath - Double garniture mécanique en chambre d'huile
 Superiore - Upper - Supérieur : Grafite/Allumina - Graphite/Alumina
 Inferiore - Lower - Inferieur : Carburo di silicio - Silicon carbide

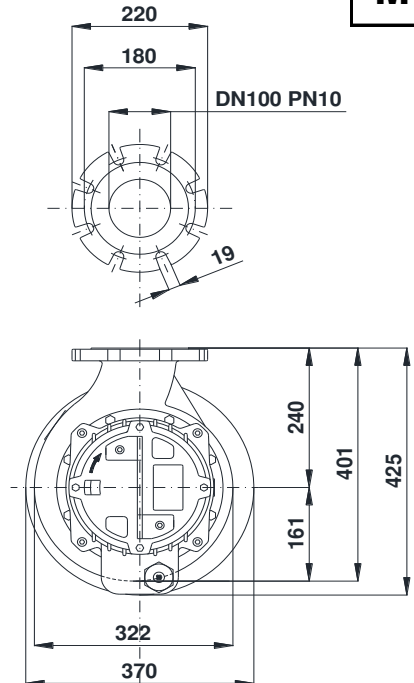
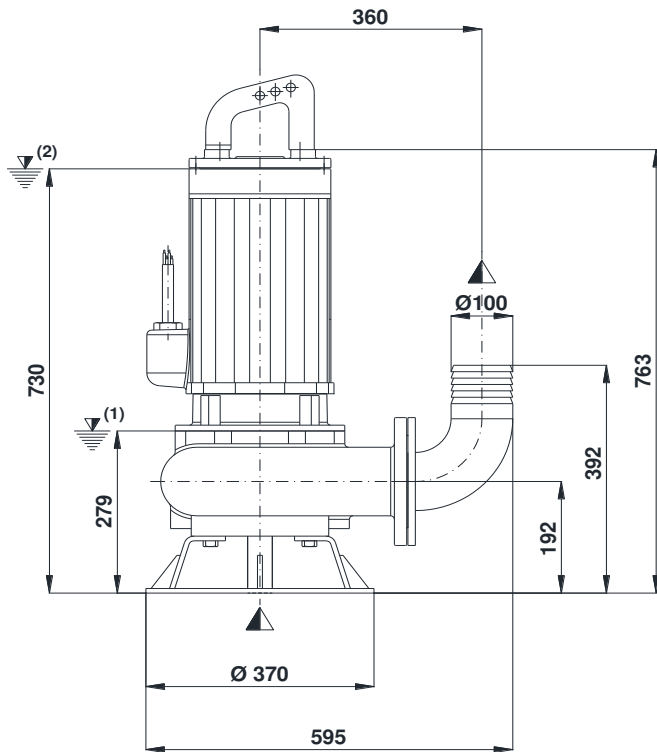
Max. temperatura liquido: 40°C - Max liquid temp. 40°C

Max profondità di installazione - Max installation depth

Max profondità d'installazione = 20m.

INSTALLAZIONE MOBILE - *Mobile installation - Installation portable*

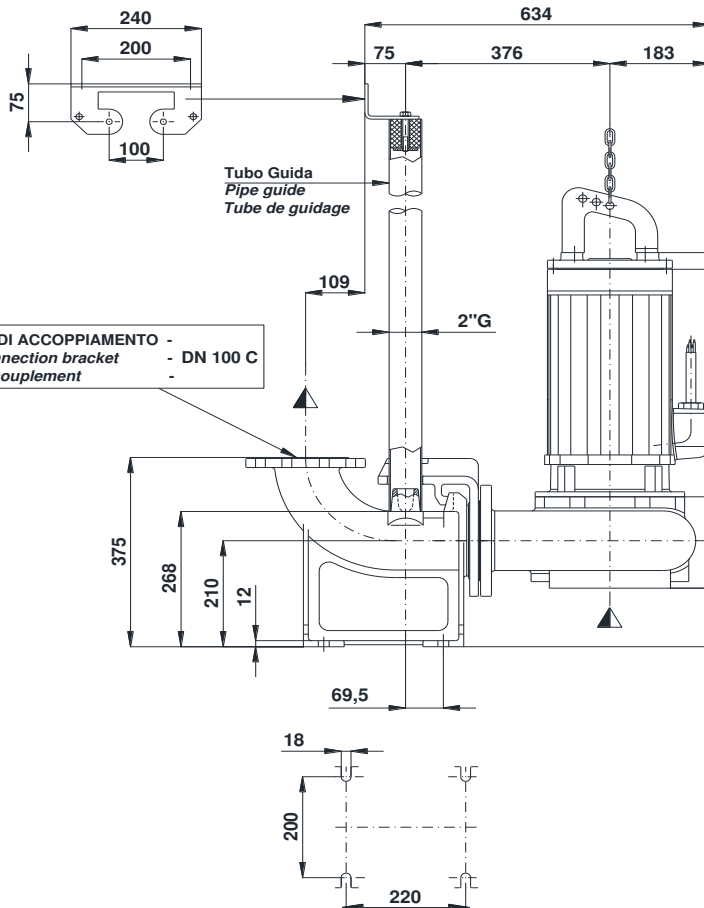
M



(1) Livello minimo di arresto per funzionamento automatico.
 Lowest shut-of level for automatic control.
 Point d'arrêt plus bas pour service automatiques.

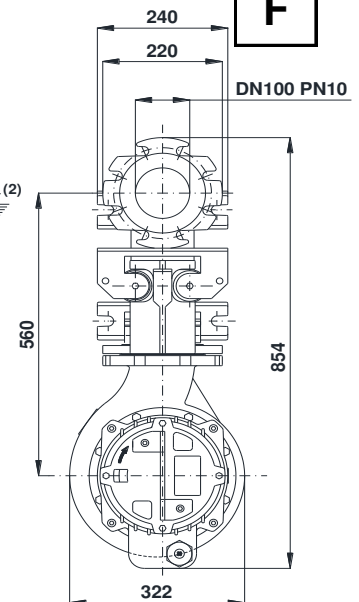
INSTALLAZIONE FISSA - *Fixed installation - Installation fixe*

Staffa fissaggio tubi guida
 Upper guide rails bracket
 Etrier supérieur pour tube de guidage



(2) Sommergenza minima per funzionamento continuo.
 Minimum covering level for continuous service.
 Submersion minimal pour service continu.

F





POMPE ROTOMECC

BT 1013-12.2

DN 100

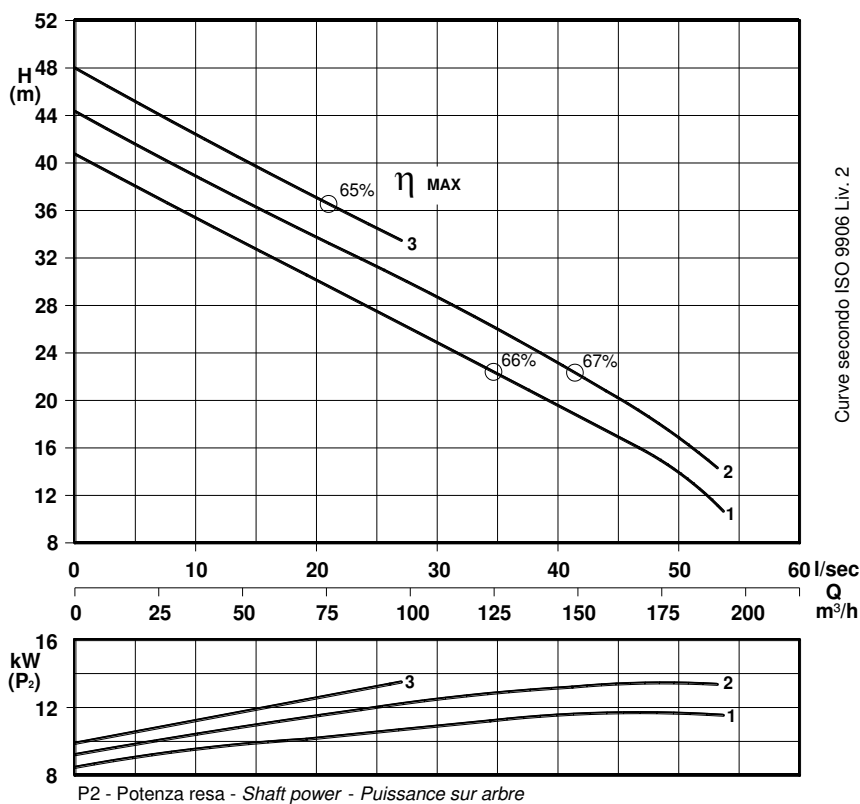
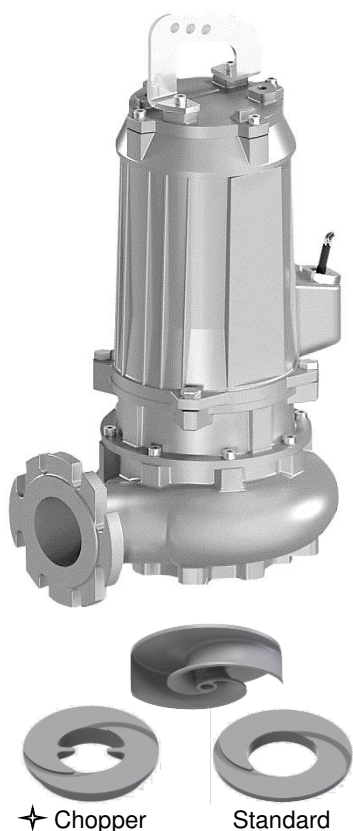
2900 rpm

Pompe sommergibili con girante bicanale aperta e diffusore autopulente
Submersible pumps with 2 channel open impeller and self-cleaning diffuser
 Pompes submersibles avec roue à 2 canaux ouvert et anneau autonettoyant



N°	CURVA - Curve - Courbe	POMPA Pump Pompe	GIRI /Min - RPM - Tours/min.	POTENZA RESA NOMINALE Rated power Puissance nominale (P ₂)	ASSORBIMENTO NOMINALE Rated current Intensité nominale 400 V.	FATTORE DI POTENZA Power factor Facteur de puissance	TENSIONE - Voltage	CAVO - Cable	SONDE TERMICHE Thermal control Thermosondes	SENSORE INFILTRAZIONE Moisture sensor Detecteur de infiltration	PESO - Weight - Poids	INSTALLAZIONE - Installation F = FISSA - Fixed - Fixe M = MOBILE - Mobile -
1	BT 1013/2 - 1178						3~ 50 Hz	H07RNF 10m				
2	BT 1013/2 - 1186	2900	13,5	26,5	0,82	400/700 V.	(1) 10G2,5	●	○	175	○	○
3	BT 1013/2 - 1192											

● Di serie - Standard ○ A richiesta - On request - A la demande



Curve secondo ISO 9906 Liv. 2

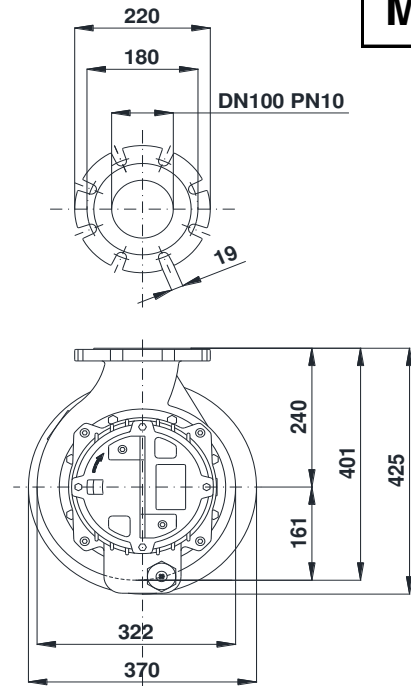
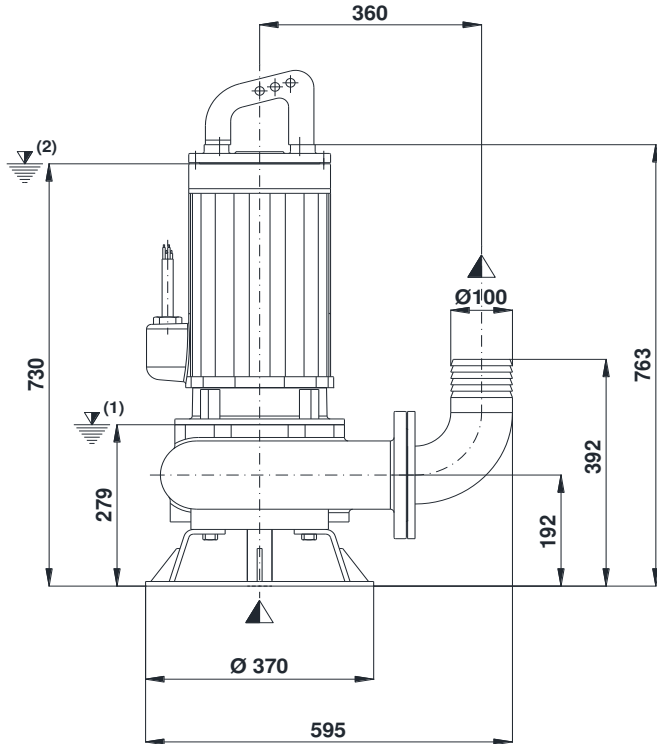
COSTRUZIONE - Materials - Matériaux	
Fusioni principali Principal parts Parts principal	Ghisa Cast iron - Fonte GG 25
Girante e diffusore Impeller and diffuser Roue et anneau	Ghisa Cast iron - Fonte GS 500
Albero - Shaft - Arbre	AISI 420
Viteria - Screws - Vis	AISI 304
Motore - Motor - Moteur : IP68	
Classe isolamento - Insulating class : F	

✦ Versione chopper con diffusore a taglienti e girante induriti
Chopper version with cutting diffuser and impeller hardened
 Version chopper avec anneau tranchant et roue durci

TENUTE MECCANICHE - Mechanical seals - Garniture mécanique
Doppia tenuta meccanica in bagno d'olio - Double mechanical seals in oil bath - Double garniture mécanique en chambre d'huile
Superiore - Upper - Supérieur : Grafite/Allumina - Graphite/Alumina
Inferiore - Lower - Inferieur : Carburo di silicio - Silicon carbide
Max. temperatura liquido: 40°C - Max liquid temp. 40°C
Max profondità di installazione - Max installation depth
Max profondità d'installazione = 20m.

INSTALLAZIONE MOBILE - *Mobile installation - Installation portable*

M

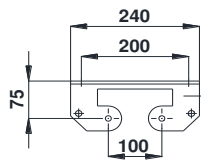


(1) Livello minimo di arresto per funzionamento automatico.
 Lowest shut-of level for automatic control.
 Point d'arrêt plus bas pour service automatiques.

INSTALLAZIONE FISSA - *Fixed installation - Installation fixe*

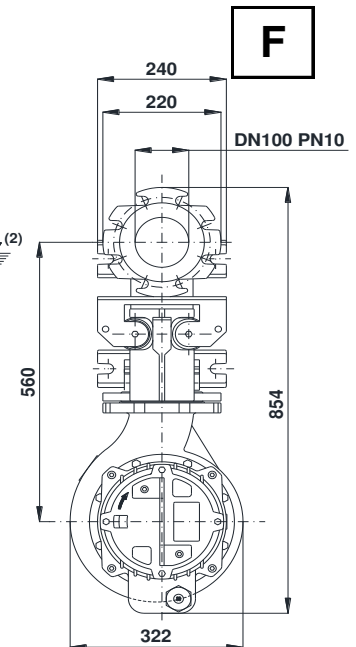
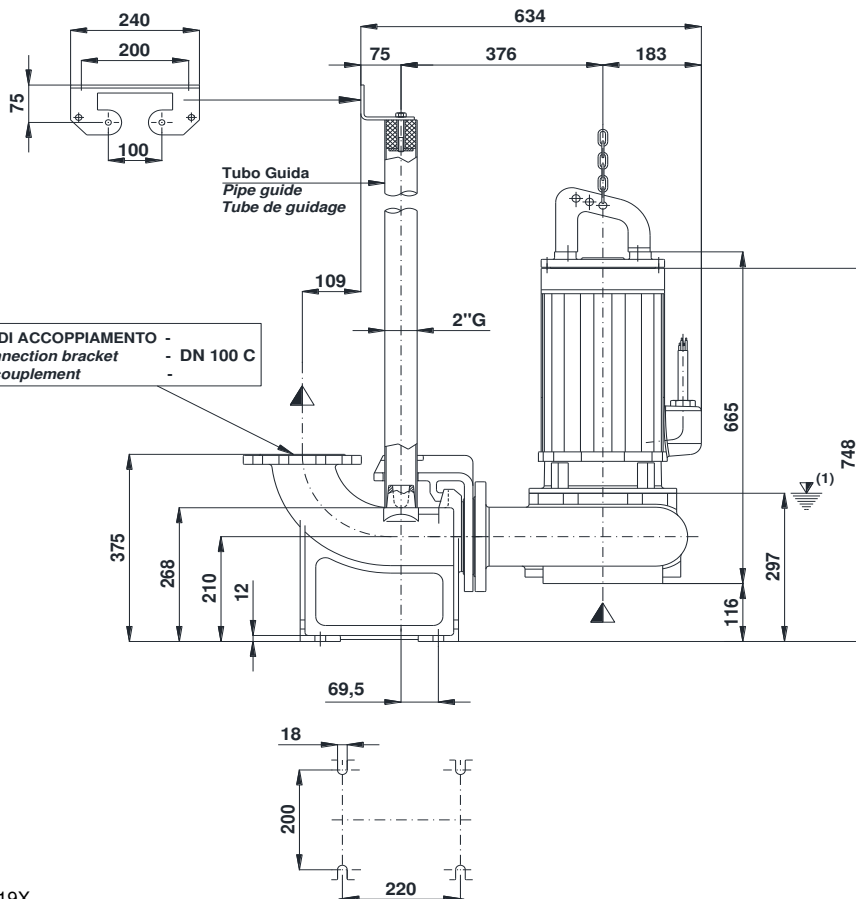
(2) Sommergenza minima per funzionamento continuo.
 Minimum covering level for continuous service.
 Submersion minimal pour service continu.

Staffa fissaggio tubi guida
 Upper guide rails bracket
 Etrier supérieur pour tube de guidage



Tubo Guida
 Pipe guide
 Tube de guidage

DISPOSITIVO DI ACCOPPIAMENTO -
 Discharge connection bracket
 Dispositif d'accouplement



F



POMPE ROTOMECC

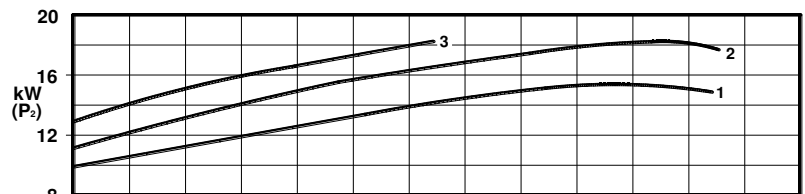
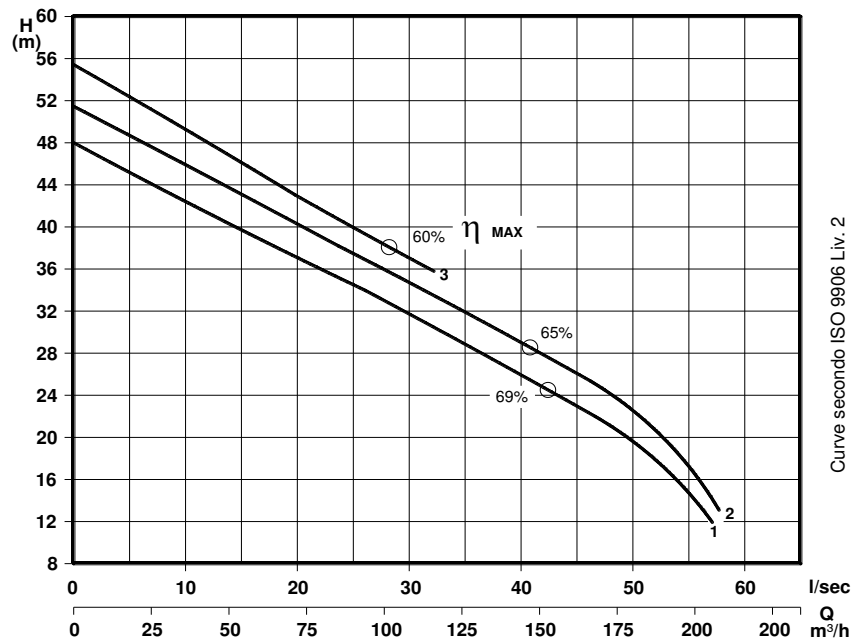
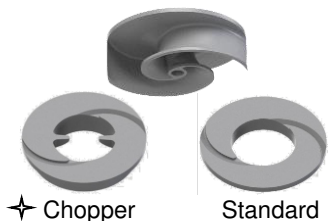
BT 1018-20.2
DN 100 2900 rpm

Pompe sommergibili con girante bicanale aperta e diffusore autopulente
Submersible pumps with 2 channel open impeller and self-cleaning diffuser
Pompes submersibles avec roue à 2 canaux ouvert et anneau autonettoyant



CURVA - Curve - Courbe	POMPA Pump Pompe	GIRI /Min - RPM. - Tours/min.	POTENZA RESA NOMINALE Rated power Puissance nominale (P ₂)	ASSORBIMENTO NOMINALE Rated current Intensité nominale 400 V.	FATTORE DI POTENZA Power factor Facteur de puissance	TENSIONE - Voltage	CAVO - Cable	SONDE TERMICHE Thermal control - Thermosondes	SENSORE INFILTRAZIONE Moisture sensor Detecteur de infiltration	PESO - Weight - Poids	INSTALLAZIONE - Installation F = FISSA - Fixed - Fixe M = MOBILE - Mobile - Portable
N°			kW	A	Cos. φ	3~ 50 Hz	H07RNF 10m			Kg	F M
1	BT 1018/2 - 2192	2900	18,5	39	0,9	400/700 V.	(1) 10G2,5	●	○	240	○ ○
2	BT 1018/2 - 2200										
3	BT 1018/2 - 2203										

● Di serie - Standard ○ A richiesta - On request - A la demande



P₂ - Potenza resa - Shaft power - Puissance sur arbre

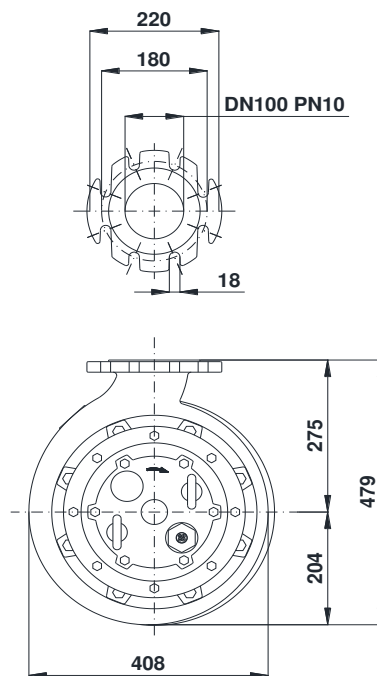
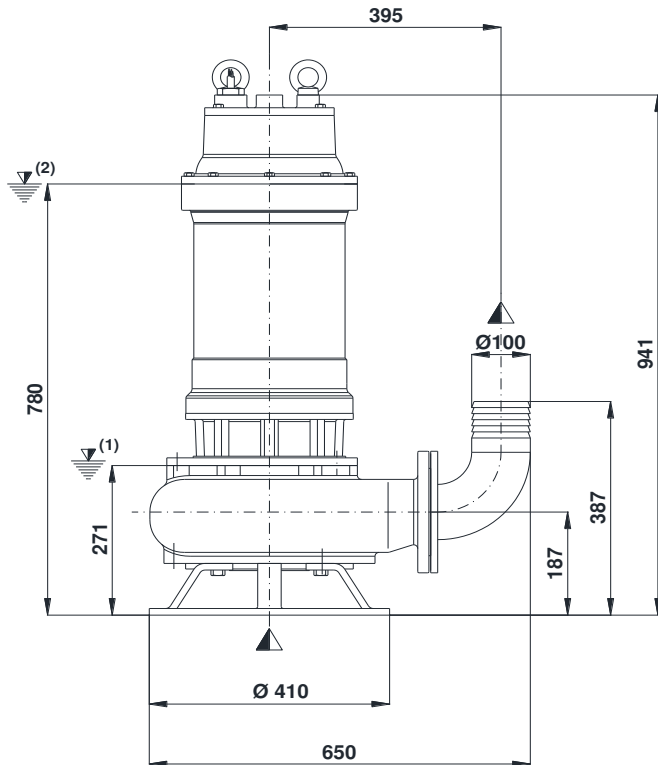
✦ Versione chopper con diffusore a taglienti e girante induriti
Chopper version with cutting diffuser and impeller hardened
Version chopper avec anneau tranchant et roue durci

COSTRUZIONE - Materials - Matériaux	
Fusioni principali <i>Principal parts</i> <i>Parts principal</i>	Ghisa <i>Cast iron - Fonte</i> GG 25
Girante e diffusore <i>Impeller and diffuser</i> <i>Roue et anneau</i>	Ghisa <i>Cast iron - Fonte</i> GG 500
Albero - Shaft - Arbre	AISI 420
Viteria - Screws - Vis	AISI 304
Motore - Motor - Moteur : IP68	
Classe isolamento - Insulating class : F	

TENUTE MECCANICHE - Mechanical seals - Garniture mécanique
Doppia tenuta meccanica in bagno d'olio - <i>Double mechanical seals in oil bath</i> - <i>Double garniture mécanique en chambre d'huile</i>
Superiore - Upper - Superieur : Grafite/Allumina - <i>Graphite/Alumina</i>
Inferiore - Lower - Inferieur : Carburo di silicio - <i>Silicon carbide</i>
Max. temperatura liquido: 40°C - <i>Max liquid temp. 40°C</i>
Max profondità di installazione - <i>Max installation depth</i>
Max profondità d'installazione = 20m.

INSTALLAZIONE MOBILE - *Mobile installation - Installation portable*

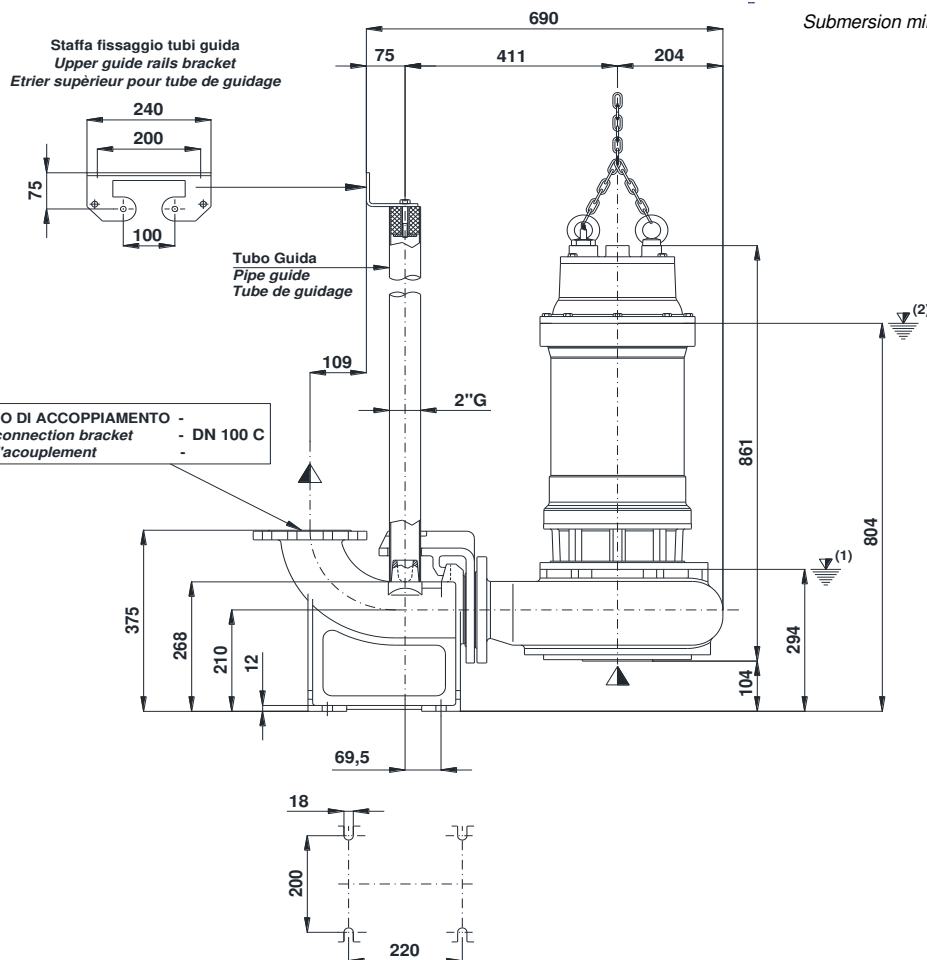
M



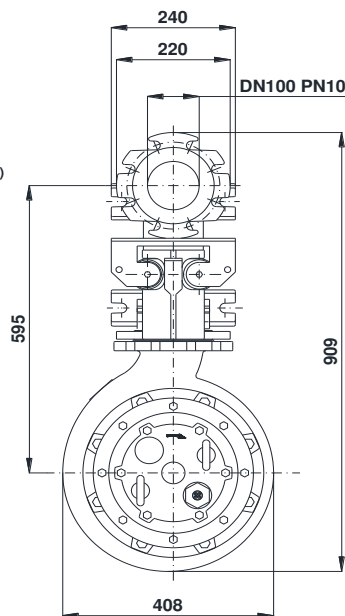
(1) Livello minimo di arresto per funzionamento automatico.
 Lowest shut-of level for automatic control.
 Point d'arrêt plus bas pour service automatiques.

INSTALLAZIONE FISSA - *Fixed installation - Installation fixe*

(2) Sommergenza minima per funzionamento continuo.
 Minimum covering level for continuous service.
 Submersion minimal pour service continuu.



F





POMPE ROTOMECH

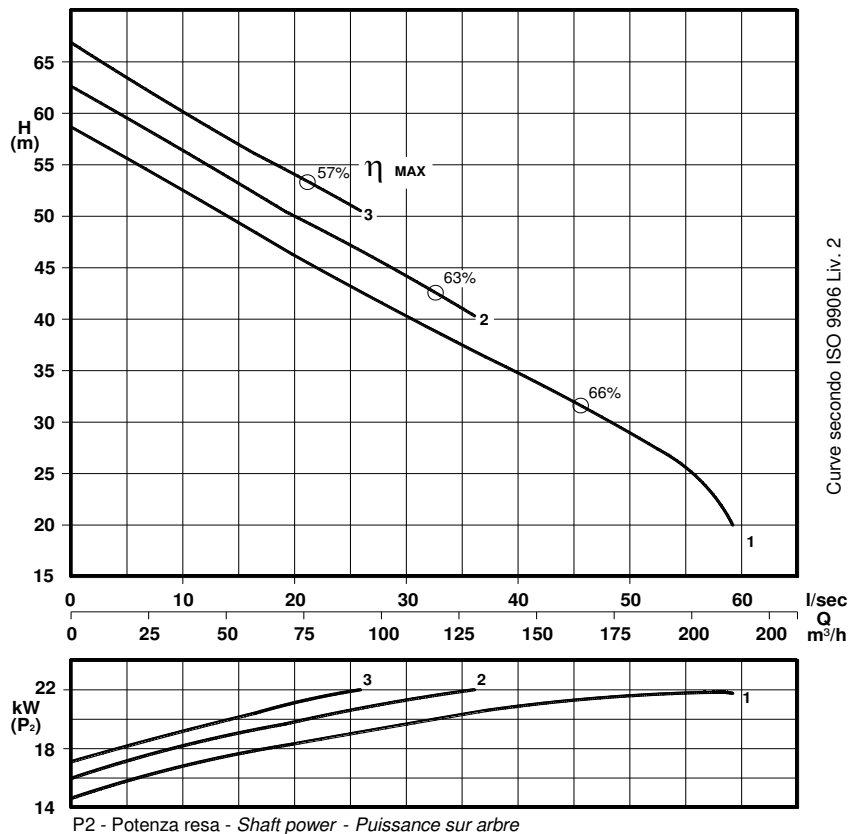
BT 1022-21.2
DN 100 2900 rpm

Pompe sommergibili con girante bicanale aperta e diffusore autopulente
Submersible pumps with 2 channel open impeller and self-cleaning diffuser
Pompes submersibles avec roue à 2 canaux ouvert et anneau autonettoyant



N°	CURVA - Curve - Courbe	POMPA Pump Pompe	GIRI /Min - RPM. - Tours/min.	POTENZA RESA NOMINALE Rated power Puissance nominale (P ₂)	ASSORBIMENTO NOMINALE Rated current Intensité nominale 400 V.	FATTORE DI POTENZA Power factor Facteur de puissance	TENSIONE - Voltage	CAVO - Cable	SONDE TERMICHE Thermal control - Thermosondes	SENSORE INFILTRAZIONE Moisture sensor Detecteur de infiltration	PESO - Weight - Poids	INSTALLAZIONE - Installation F = FISSA - Fixed - Fixe M = MOBILE - Mobile - Portable				
1	BT 1022/2 - 2206	2900	22	45	0,89	3~ 50 Hz	400/700 V.	H07RNF 10m	●	○	Kg	F	M			
2	BT 1022/2 - 2213													245	○	○
3	BT 1022/2 - 2219													245	○	○

● Di serie - Standard ○ A richiesta - On request - A la demande



COSTRUZIONE - Materials - Matériaux	
Fusioni principali Principal parts Parts principal	Ghisa Cast iron - Fonte GG 25
Girante e diffusore Impeller and diffuser Roue et anneau	Ghisa Cast iron - Fonte GG 500
Albero - Shaft - Arbre	AISI 420
Viteria - Screws - Vis	AISI 304
Motore - Motor - Moteur : IP68	
Classe isolamento - Insulating class : F	

✦ Versione chopper con diffusore a taglienti e girante induriti
Chopper version with cutting diffuser and impeller hardened
Version chopper avec anneau tranchant et roue durci

TENUTE MECCANICHE - Mechanical seals - Garniture mécanique

Doppia tenuta meccanica in bagno d'olio - Double mechanical seals in oil bath - Double garniture mécanique en chambre d'huile
Superiore - Upper - Supérieur : Grafite/Allumina - Graphite/Alumina
Inferiore - Lower - Inferieur : Carburo di silicio - Silicon carbide

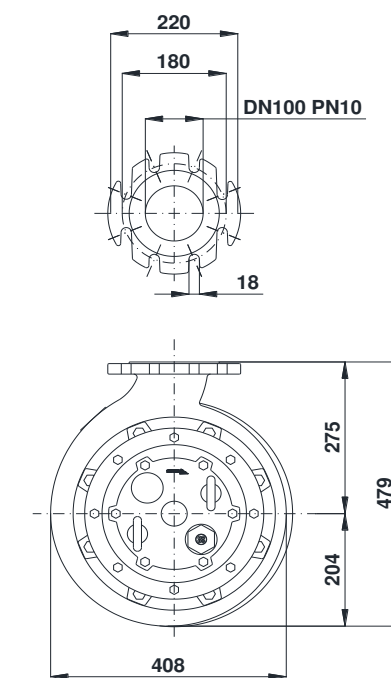
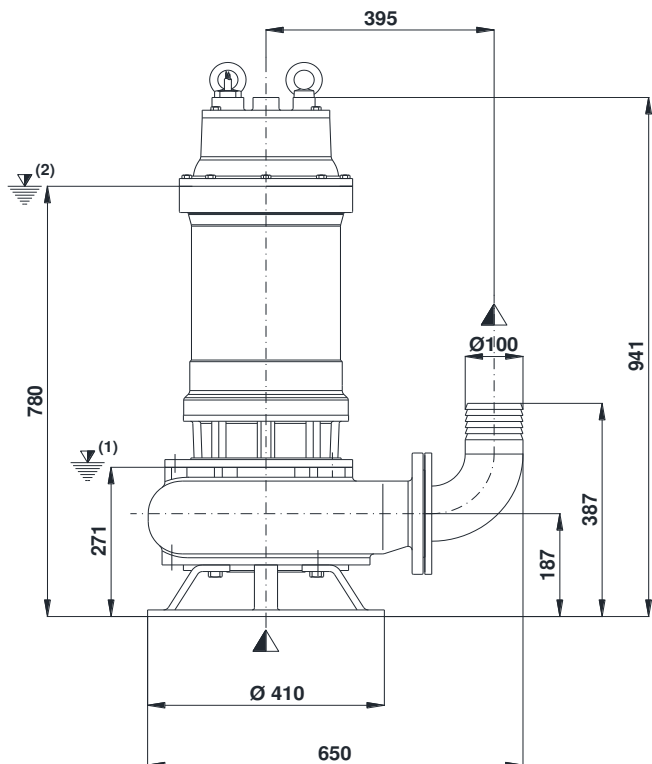
Max. temperatura liquido: 40°C - Max liquid temp. 40°C

Max profondità di installazione - Max installation depth

Max profondità d'installazione = 20m.

INSTALLAZIONE MOBILE - *Mobile installation - Installation portable*

M



(1) Livello minimo di arresto per funzionamento automatico.
 Lowest shut-of level for automatic control.
 Point d'arrêt plus bas pour service automatiques.

INSTALLAZIONE FISSA - *Fixed installation - Installation fixe*

(2) Sommergenza minima per funzionamento continuo.
 Minimum covering level for continuous service.
 Submersion minimal pour service continu.

F

