



POMPE ROTOMECC

BT 1002-10.6

DN 100

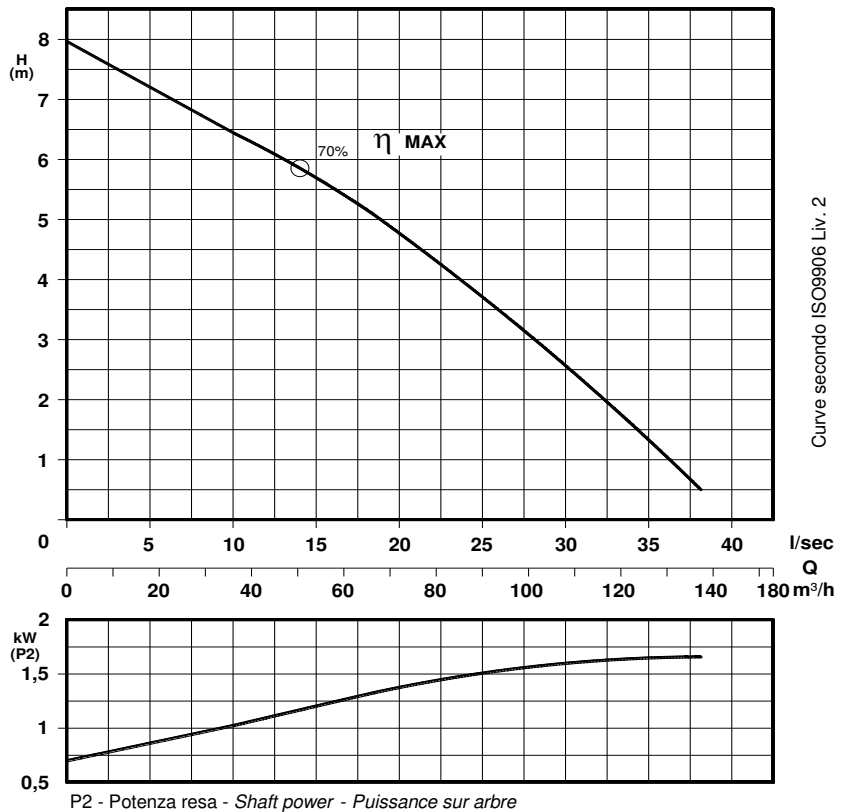
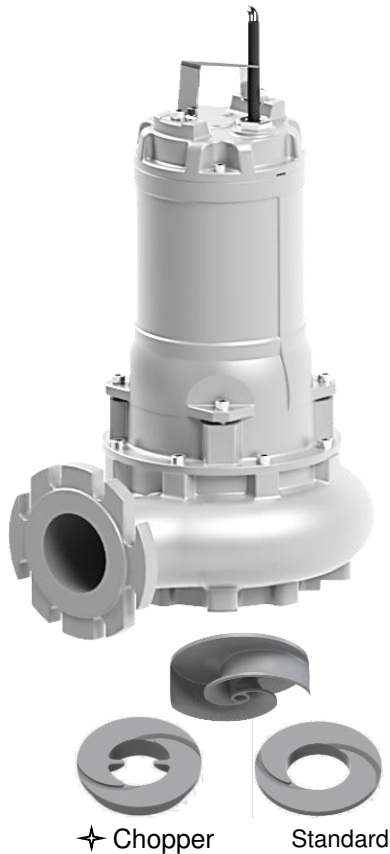
960 rpm

Pompe sommergibili con girante bicanale aperta e diffusore autopulente
Submersible pumps with 2 channel open impeller and self-cleaning diffuser
 Pompes submersibles avec roue à 2 canaux ouvert et anneau autonettoyant



N°	CURVA - Curve - Courbe	POMPA Pump Pompe	GIRI /Min - RPM - Tours/min.	POTENZA RESA NOMINALE Rated power Puissance nominale (P _n)	ASSORBIMENTO NOMINALE Rated current Intensité nominale 400 V.	FATTORE DI POTENZA Power factor Facteur de puissance	TENSIONE - Voltage	CAVO - Cable	SONDE TERMICHE Thermal control - Thermosondes	SENSORE INFILTRAZIONE Moisture sensor Détecteur de infiltration	PESO - Weight - Poids	INSTALLAZIONE - Installation	F	M	T	
				kW	A	Cos. φ	3~ 50 Hz	H07RNF 10m			Kg					
1	BT 1002/6 - 1219		960	2,5	6,6	0,76	400 V.	(1) 4G2,5 ● (1) 7G1,5 ■	○	○	118	○	○	○	○*	

● Di serie - Standard ■ Con protezioni - With protection - Avec thermosondes ○ A richiesta - On request - A la demande
 * Con limitazioni di potenza e servizio; consultare ns. ufficio commerciale - Limited rated power contact sales office - Puissance limitée



Curve secondo ISO9906 Liv. 2

COSTRUZIONE - Materials - Matériaux	
Fusioni principali Principal parts Parts principal	Ghisa Cast iron - Fonte GG 25
Girante e diffusore Impeller and diffuser Roue et anneau	Ghisa Cast iron - Fonte GS 500
Albero - Shaft - Arbre	AISI 420
Viteria - Screws - Vis	AISI 304
Motore - Motor - Moteur : IP 68	
Classe isolamento - Insulating class : F	

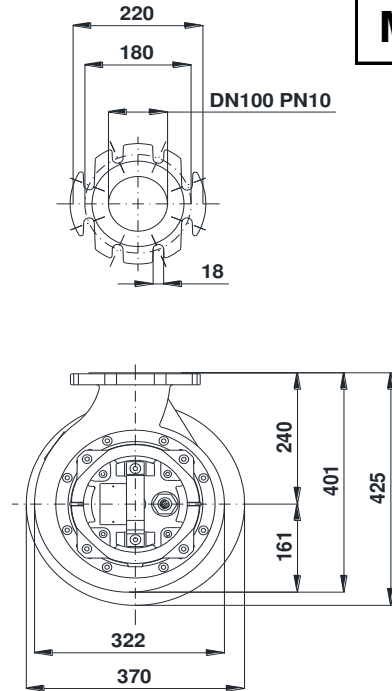
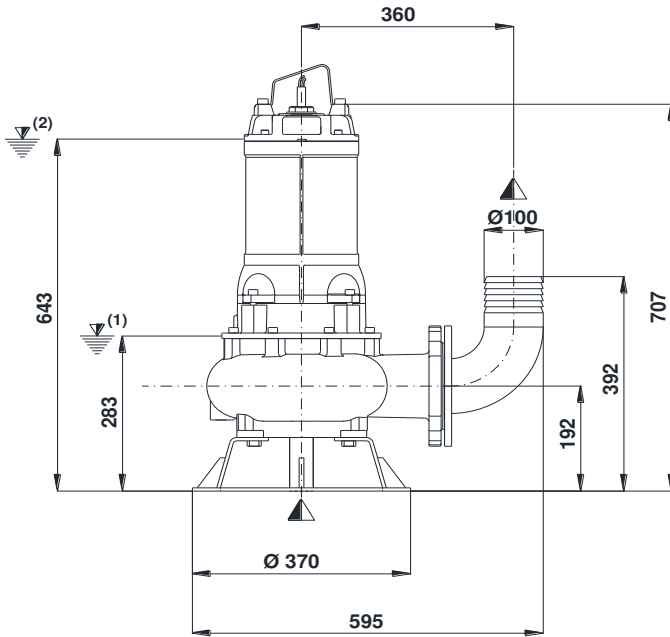
✦ Versione chopper con diffusore a taglienti e girante induriti
Chopper version with cutting diffuser and impeller hardened
 Version chopper avec anneau tranchant et roue durci

TENUTE MECCANICHE - Mechanical seals - Garniture mécanique

Doppia tenuta meccanica in bagno d'olio - Double mechanical seals in oil bath - Double garniture mécanique en chambre d'huile
 Superiore - Upper - Supérieur : Grafite/Allumina - Graphite/Alumina
 Inferiore - Lower - Inferieur : Carburo di silicio - Silicon carbide
 Max temperatura liquido: 40°C - Max liquid temp. 40°C

Max profondità di installazione - Max installation depth
 Max profondità d'installazione = 20m.

INSTALLAZIONE MOBILE - *Mobile installation - Installation portable*



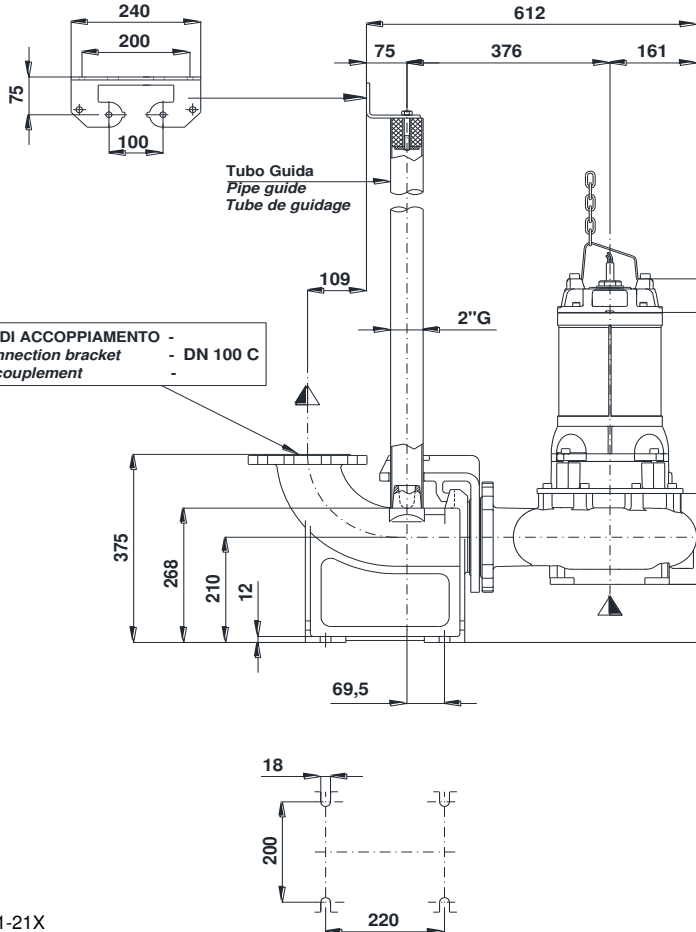
M

(1) Livello minimo di arresto per funzionamento automatico.
 Lowest shut-of level for automatic control.
 Point d'arrêt plus bas pour service automatiques.

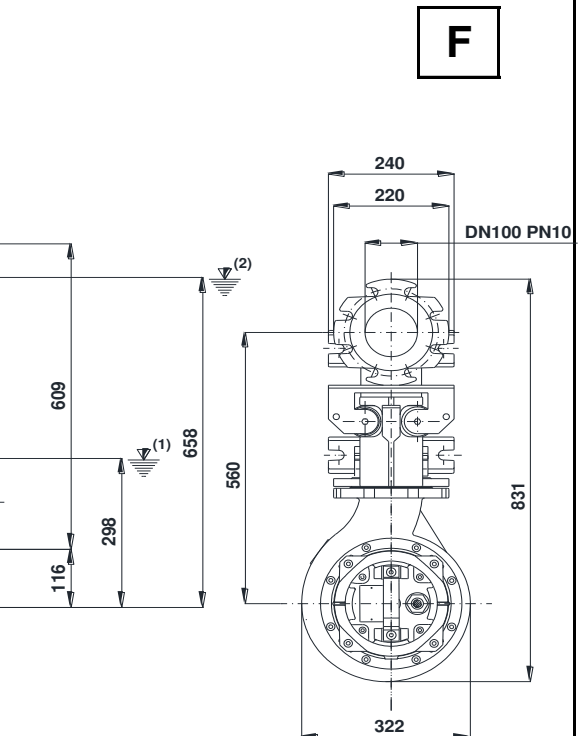
(2) Sommergenza minima per funzionamento continuo.
 Minimum covering level for continuous service.
 Submersion minimal pour service continu.

INSTALLAZIONE FISSA - *Fixed installation - Installation fixe*

Staffa fissaggio tubi guida
 Upper guide rails bracket
 Etrier supérieur pour tube de guidage



DISPOSITIVO DI ACCOPPIAMENTO -
 Discharge connection bracket - DN 100 C
 Dispositif d'accouplement



F

BT 100-220-1-21X

Con riserva di variazioni tecniche e costruttive senza preavviso.

With reserve of technical and constructive variations without warning. Avec réserve de variations techniques et constructives sans préavis

POMPE ROTOMECC s.r.l. - 20063 CERNUSCO SUL NAVIGLIO (MI) - ITALY - Via Ponchielli, 1

Tel. +39.02.9211.0205 - +39.02.9233.0399 Fax 02.9211.0630 Sito Internet: www.pomperotomec.it E-mail: sales@pomperotomec.it



POMPE ROTOMECC

BT 1003-20.6

DN 100

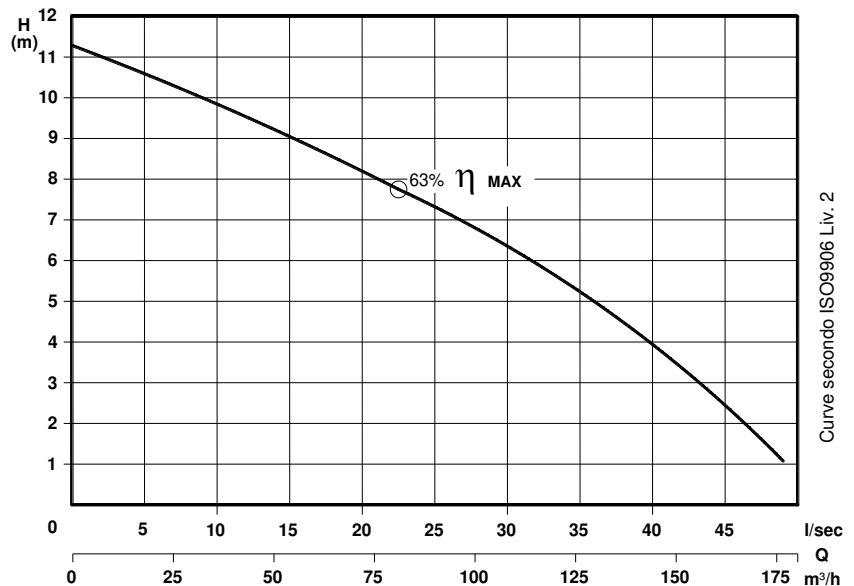
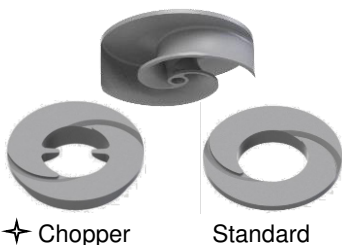
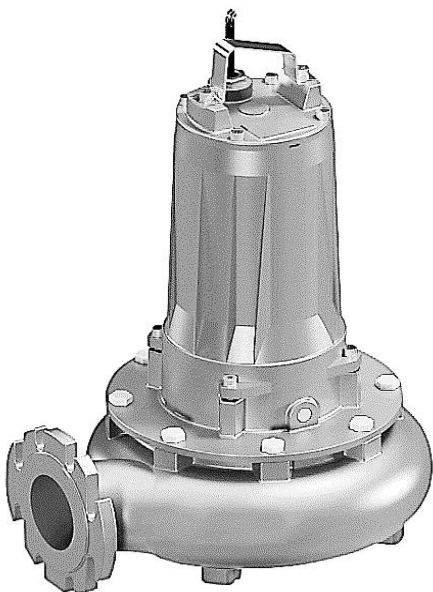
960 rpm

Pompe sommergibili con girante bicanale aperta e diffusore autopulente
Submersible pumps with 2 channel open impeller and self-cleaning diffuser
 Pompes submersibles avec roue à 2 canaux ouvert et anneau autonettoyant



N°	CURVA - Curve - Courbe	POMPA Pump Pompe	GIRI /Min - RPM - Tours/min.	POTENZA RESA NOMINALE Rated power Puissance nominale (P _n)	ASSORBIMENTO NOMINALE Rated current Intensité nominale 400 V.	FATTORE DI POTENZA Power factor Facteur de puissance	TENSIONE - Voltage	CAVO - Cable	SONDE TERMICHE Thermal control - Thermosondes	SENSORE INFILTRAZIONE Moisture sensor Détecteur de infiltration	PESO - Weight - Poids	INSTALLAZIONE - Installation	F = FISSA - Fixed - Fixe	M = MOBILE - Mobile - Portable	T = CAMERA SECCA - Dry pit - Chambre sèche
				kW	A	Cos. φ	3~ 50 Hz	H07RNF 10m			Kg	F	M	T	
1	BT 1003/6 - 2260		960	3,5	8,8	0,77	400 V.	(1) 4G2,5 ● (1) 7G2,5 ■	○	○	135	○	○	○*	

● Di serie - Standard ■ Con protezioni - With protection - Avec thermosondes ○ A richiesta - On request - A la demande
 * Con limitazioni di potenza e servizio; consultare ns. ufficio commerciale - Limited rated power contact sales office - Puissance limitée



P2 - Potenza resa - Shaft power - Puissance sur arbre

COSTRUZIONE - Materials - Matériaux	
Fusioni principali Principal parts Parts principal	Ghisa Cast iron - Fonte GG 25
Girante e diffusore Impeller and diffuser Roue et anneau	Ghisa Cast iron - Fonte GS 500
Albero - Shaft - Arbre	AISI 420
Viteria - Screws - Vis	AISI 304
Motore - Motor - Moteur	IP 68
Classe isolamento - Insulating class	F

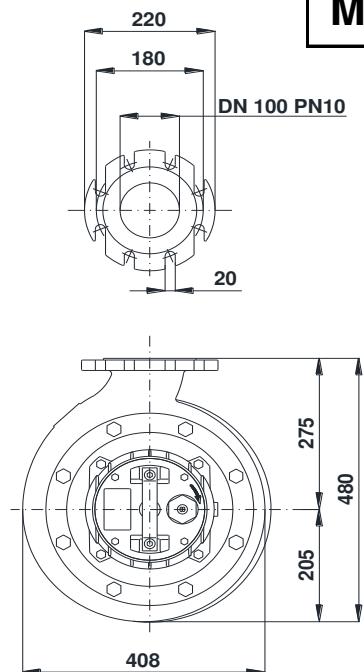
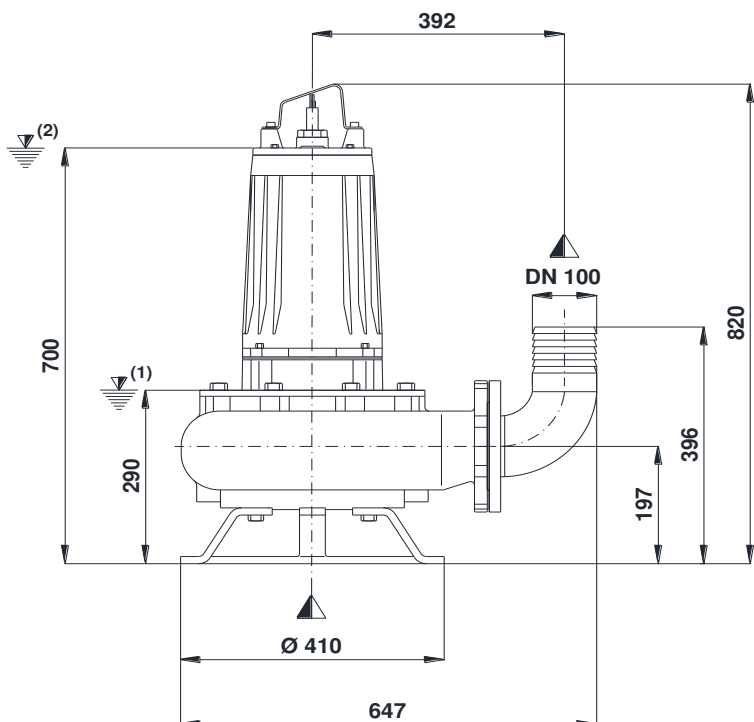
✦ Versione chopper con diffusore a taglienti e girante induriti
Chopper version with cutting diffuser and impeller hardened
 Version chopper avec anneau tranchant et roue durci

TENUTE MECCANICHE - Mechanical seals - Garniture mécanique

Doppia tenuta meccanica in bagno d'olio - Double mechanical seals in oil bath - Double garniture mécanique en chambre d'huile
 Superiore - Upper - Supérieur : Grafite/Allumina - Graphite/Alumina
 Inferiore - Lower - Inferieur : Carburo di silicio - Silicon carbide
 Max temperatura liquido: 40°C - Max liquid temp. 40°C
 Max profondità di installazione - Max installation depth
 Max profondità d'installazione = 20m.

INSTALLAZIONE MOBILE - *Mobile installation - Installation portable*

M

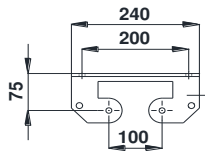


(1) Livello minimo di arresto per funzionamento automatico.
 Lowest shut-of level for automatic control.
 Point d'arrêt plus bas pour service automatiques.

INSTALLAZIONE FISSA - *Fixed installation - Installation fixe*

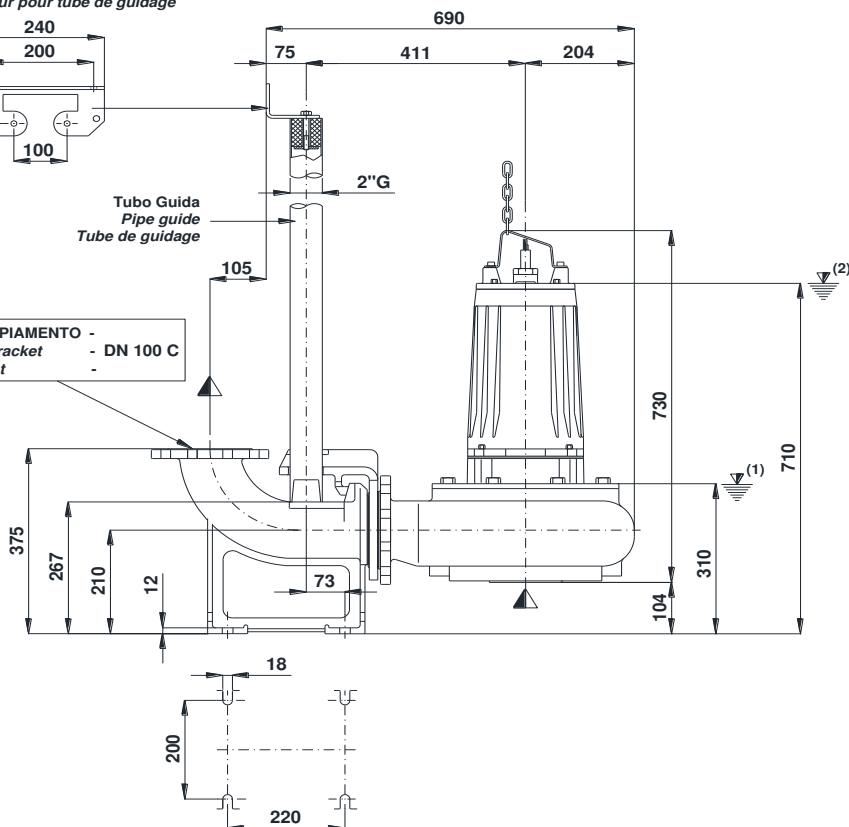
(2) Sommergenza minima per funzionamento continuo.
 Minimum covering level for continuous service.
 Submersion minimal pour service continu.

Staffa fissaggio tubi guida
 Upper guide rails bracket
 Etrier supérieur pour tube de guidage



Tubo Guida
 Pipe guide
 Tube de guidage

DISPOSITIVO DI ACCOPPIAMENTO -
 Discharge connection bracket
 Dispositif d'acouplement



F

