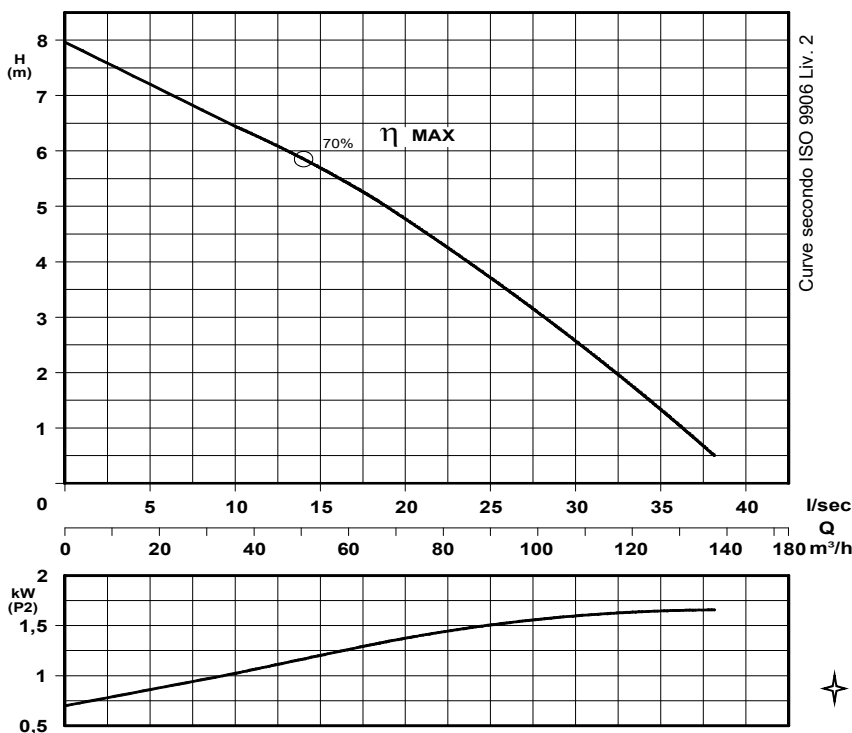
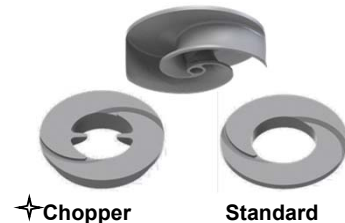


Elettropompe con motore flangiato per liquidi carichi in camera asciutta  
*Dry installed sewage electric pumps with flanged motor*  
*Electropompes pour eaux chargées en fosse sèche*



N°	CURVA - Curve - Courbe	POMPA Pump Pompe	DN	GIRI/Min - RPM - Tours/min. POTENZA MOTORE Motor rating Puissance moteur	PESO - Weight - Poids*	
						kW
1	KBM 100/6-219 A2 L2		100	960	3	95

Girante bicanale aperta e diffusore autopulente  
*Two channel open impeller and self-cleaning diffuser*  
*Roue à 2 canaux ouvert et anneau autonettoyant*



✦ Versione chopper con diffusore a taglienti e girante induriti  
*Chopper version with cutting diffuser and impeller hardened*  
*Version chopper avec anneau tranchant et roue durci*

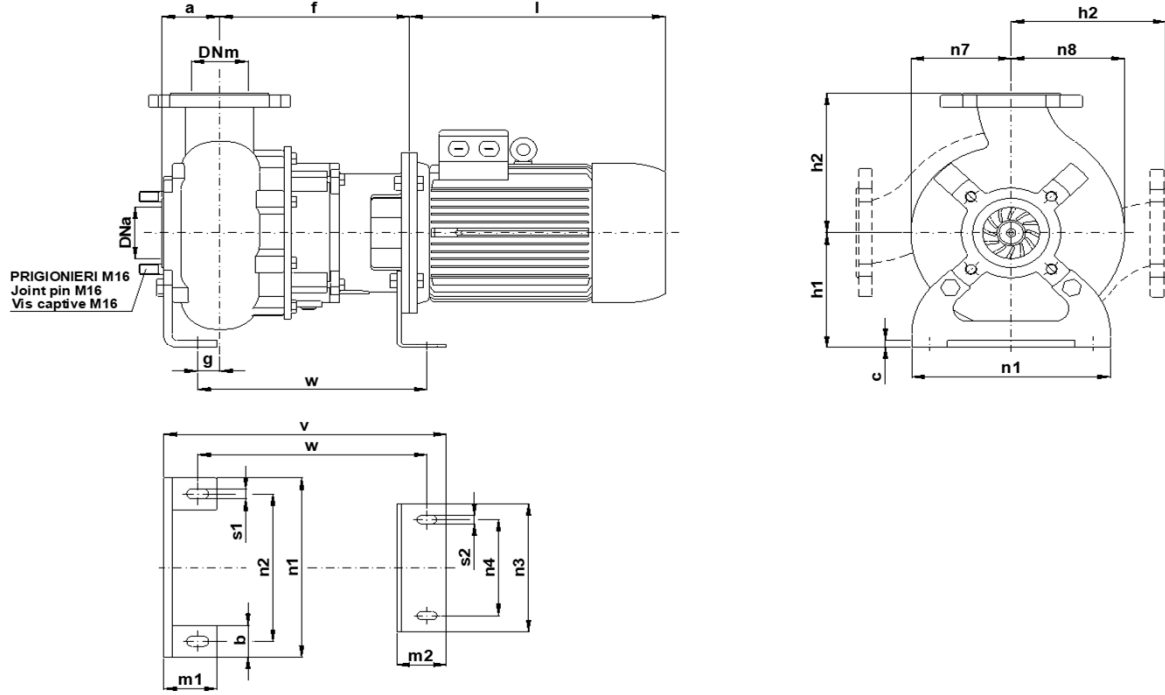
P2 - Potenza resa - Shaft power - Puissance sur arbre

COSTRUZIONE - Materials - Matériaux	
Fusioni principali - Principal parts - Parts principal	Ghisa - Fonte - GG 25
Girante - Impeller - Roue	Ghisa - Fonte - GS 500
Diffusore - Diffuser - Anneau	Ghisa - Cast iron - Fonte - GS 500
Albero - Shaft - Arbre	AISI 420
Viteria - Screws - Vis	AISI 304

TENUTE MECCANICHE - Mechanical seals - Garniture mécanique
Doppia tenuta meccanica in bagno d'olio - Double mechanical seals in oil bath - Double garniture mécanique en chambre
Tenuta lato motore / tenuta lato liquido : carburo di silicio
Motor side / liquid side mechanical seal : silicon carbide
Garniture mécanique côté du moteur / côté liquide : carbure de silicium

CARATTERISTICHE TECNICHE - Technical Features - Caractéristiques Techniques	
Motore - Motor - Moteur : B5 IP55	Classe isolamento - Insulating class - Isolement classe : F
Max. temperatura liquido - Max liquid temp. - Max Temperature du liquide: 60°C	
pH Liquido pompato - pH pumped liquid - pH du liquide pompé : 6 - 10	

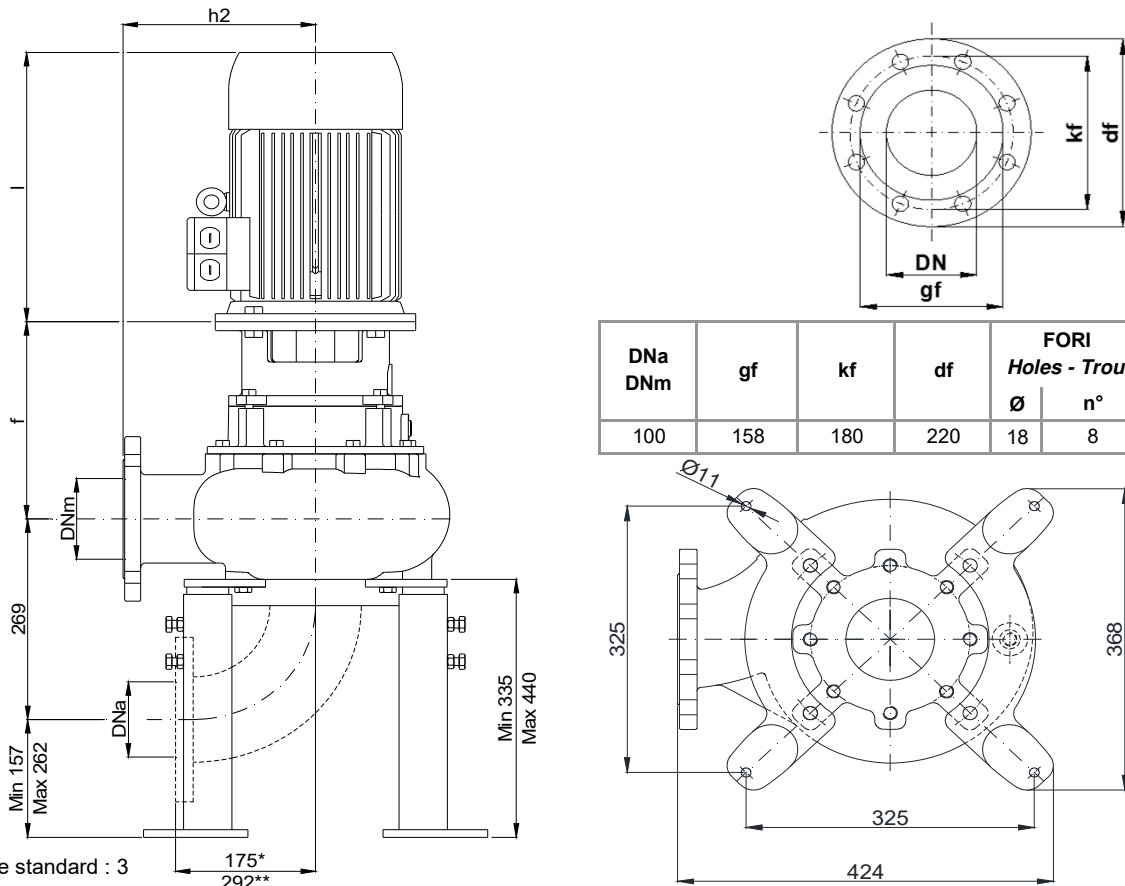
**INSTALLAZIONE ORIZZONTALE - *Horizontal installation - Installation Horizontale***



POMPA <i>Pumps Pompe</i>	DNa DNm	Gr. Motore <i>Motor size Taille du moteur</i>	a	b	c	f	g	h1	h2	l	m1	m2	n1	n2	n3	n4	n7	n8	s1	s2	v	w
KBM 100 - ....	100	132	95	50	12	251	49	180	240	435	75	70	300	250	200	150	155	175	16	13	409	334

Dimensioni - *Size - Dimensions* in mm.

**INSTALLAZIONE VERTICALE - *Vertical installation - Installation verticale***



DNa DNm	gf	kf	df	FORI <i>Holes - Trou</i>	
				Ø	n°
100	158	180	220	18	8

\* Curva dima - *Curve standard* : 3

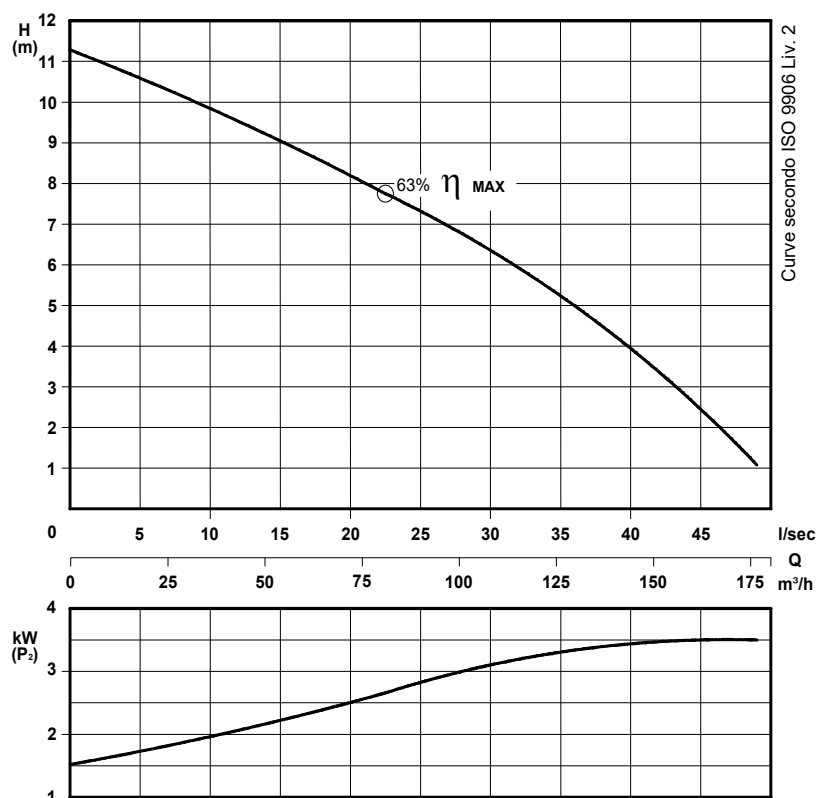
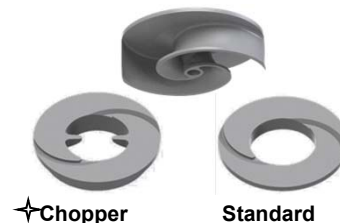
\*\* Curva dima - *Curve standard*: 5

**Elettropompe con motore flangiato per liquidi carichi in camera asciutta**  
**Dry installed sewage electric pumps with flanged motor**  
**Electropompes pour eaux chargées en fosse sèche**



<i>CURVA - Curve - Courbe</i>		<i>POMPA Pump Pompe</i>		<i>DN</i>	<i>GIRI /Min - RPM - Tours/min.</i>	<i>POTENZA MOTORE Motor rating Puissance moteur</i>	<i>PESO Weight Poids</i>
N°						<b>kW</b>	<b>Kg</b>
1	<b>KBM 100/6-260 A4 L3</b>	100	960	4	185		

**Girante bicanale aperta e diffusore autopulente**  
**Two channel open impeller and self-cleaning diffuser**  
**Roue à 2 canaux ouvert et anneau autonettoyant**



✦ Versione chopper con diffusore a taglienti e girante induriti  
 Chopper version with cutting diffuser and impeller hardened  
 Version chopper avec anneau tranchant et roue durci

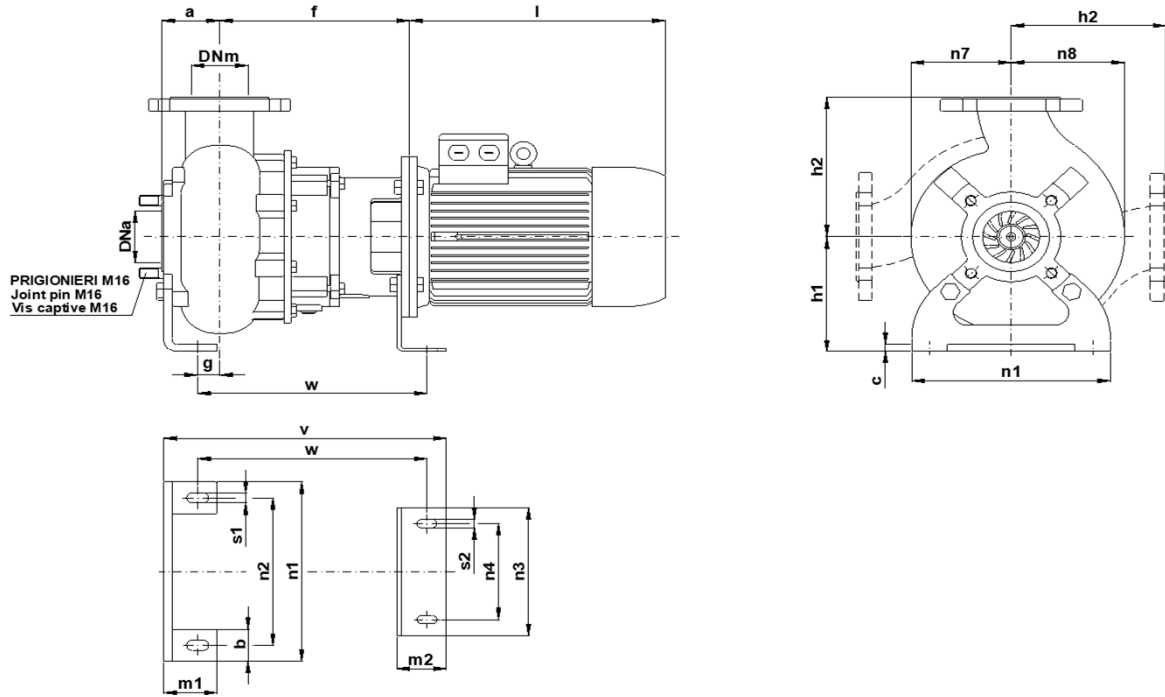
P<sub>2</sub> - Potenza resa - Shaft power - Puissance sur arbre

<b>COSTRUZIONE - Materials - Matériaux</b>	
Fusioni principali - <i>Principal parts - Parts principal</i>	Ghisa - Cast iron - Fonte - GG 25
Girante - <i>Impeller - Roue</i>	Ghisa - Cast iron - Fonte - GS 500
Diffusore - <i>Diffuser - Anneau</i>	Ghisa - Cast iron - Fonte - GS 500
Albero - <i>Shaft - Arbre</i>	AISI 420
Viteria - <i>Screws - Vis</i>	AISI 304

<b>TENUTE MECCANICHE - Mechanical seals - Garniture mécanique</b>
Doppia tenuta meccanica in bagno d'olio - <i>Double mechanical seals in oil bath - Double garniture mécanique en chambre d'huile</i>
Tenuta lato motore / tenuta lato liquido : carburo di silicio <i>Motor side / liquid side mechanical seal : silicon carbide</i>
Garniture mécanique côté du moteur / côté liquide : carbure de silicium

<b>CARATTERISTICHE TECNICHE - Technical Features - Caractéristiques Techniques</b>	
Motore - <i>Motor - Moteur</i> : B5 IP55	Classe isolamento - <i>Insulating class - Isolement classe</i> : F
Max. temperatura liquido - <i>Max liquid temp. - Max Temperature du liquide</i> : 60°C	
pH Liquido pompato - <i>pH pumped liquid - pH du liquide pompé</i> : 6 - 10	

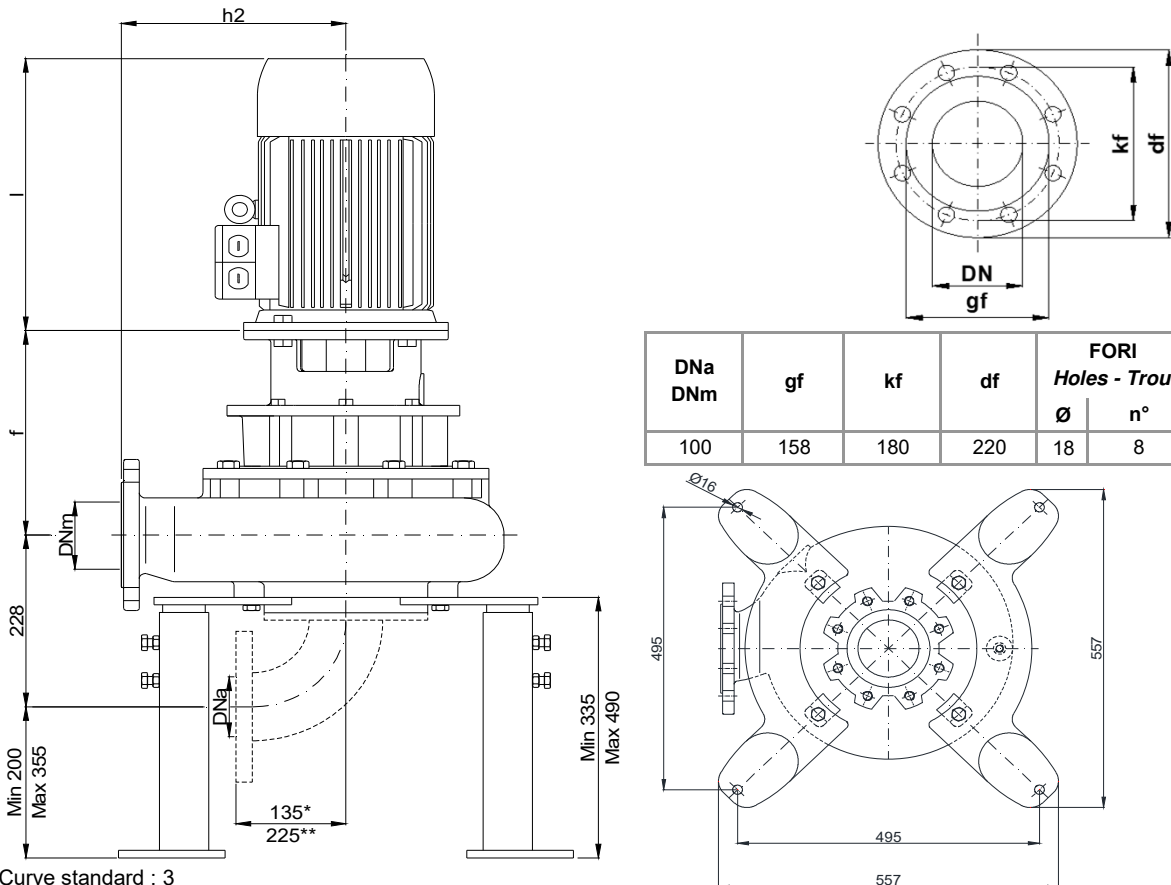
INSTALLAZIONE ORIZZONTALE - *Horizontal installation - Installation Horizontale*



POMPA Pumps Pompe	DNa DNm	Gr. Motore Motor size Taille du moteur	a	b	c	f	g	h1	h2	l	m1	m2	n1	n2	n3	n4	n7	n8	s1	s2	v	w
KBM 100 - ....	100	132	105	70	12	315	48	245	275	435	100	100	400	330	300	200	195	215	18	18	502	400

Dimensioni - Size - Dimensions in mm.

INSTALLAZIONE VERTICALE - *Vertical installation - Installation verticale*



DNa DNm	gf	kf	df	FORI Holes - Trou	
				Ø	n°
100	158	180	220	18	8

\* Curva dima - Curve standard : 3

\*\* Curva dima - Curve standard: 5

KBM 100/6-280-1-19X.0

Con riserva di variazioni tecniche e costruttive senza preavviso.

With reserve of technical and constructive variations without warning. Avec réserve de variations techniques et constructives sans préavis

**POMPE ROTOMECC s.r.l.** - 20063 CERNUSCO SUL NAVIGLIO (MI) - ITALY - Via Ponchielli, 1

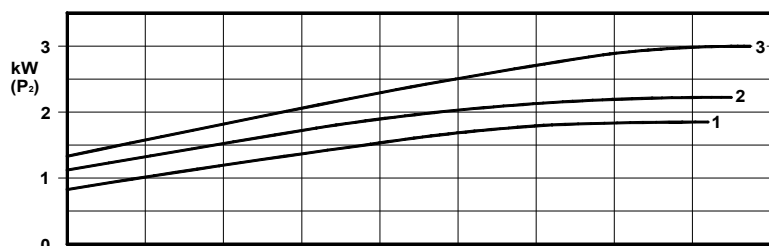
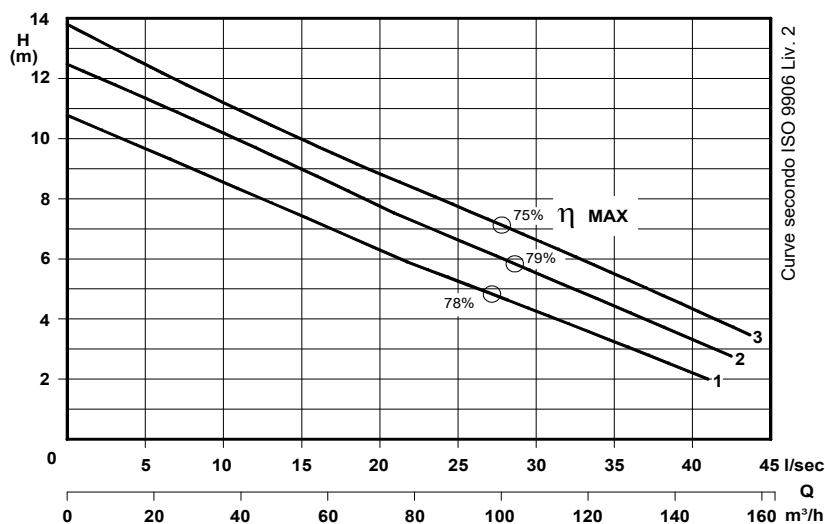
Tel. +39.02.9211.0205 - +39.02.9233.0399 Fax 02 9211.0630 Sito Internet: [www.pomperotomec.it](http://www.pomperotomec.it) E-mail: [sales@pomperotomec.it](mailto:sales@pomperotomec.it)

Elettropompe con motore flangiato per liquidi carichi in camera asciutta  
*Dry installed sewage electric pumps with flanged motor*  
*Electropompes pour eaux chargées en fosse sèche*



CURVA - Curve - Courbe		POMPA Pump Pompe		DN	GIRI /Min - RPM - Tours/min.	POTENZA MOTORE Motor rating Puissance moteur	PESO Weight Poids
N°						kW	Kg
1	KBM 100-175 A2 L2	100	1450			2,2	105
2	KBM 100-185 A2 L2						
3	KBM 100-195 A2 L2						

Girante bicanale aperta e diffusore autopulente  
*Two channel open impeller and self-cleaning diffuser*  
*Roue à 2 canaux ouvert et anneau autonettoyant*



P<sub>2</sub> - Potenza resa - Shaft power - Puissance sur arbre

✦ Versione chopper con diffusore a taglienti e girante indurite  
*Chopper version with cutting diffuser and impeller hardened*

### COSTRUZIONE - Materials - Matériaux

Fusioni principali - Principal parts - Parts principal	Ghisa - Cast iron - Fonte - GG 25
Girante - Impeller - Roue	Ghisa - Cast iron - Fonte - GS 500
Diffusore - Diffuser - Anneau	Ghisa - Cast iron - Fonte - GS 500
Albero - Shaft - Arbre	AISI 420
Viteria - Screws - Vis	AISI 304

### TENUTE MECCANICHE - Mechanical seals - Garniture mécanique

Doppia tenuta meccanica in bagno d'olio - Double mechanical seals in oil bath - Double garniture mécanique en chambre d'huile

Tenuta lato motore / tenuta lato liquido : carburo di silicio

Motor side / liquid side mechanical seal : silicon carbide

Garniture mécanique côté du moteur / côté liquide : carbure de silicium

### CARATTERISTICHE TECNICHE - Technical Features - Caractéristiques Techniques

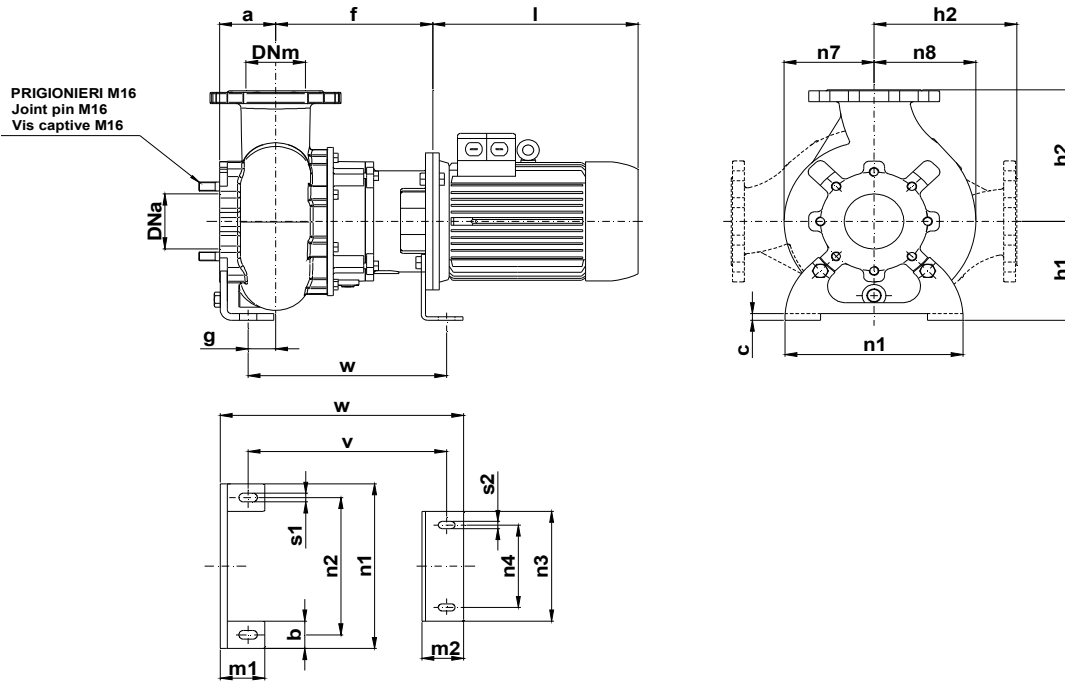
Motore - Motor - Moteur : B5 IP55

Classe isolamento - Insulating class - Isolement classe : F

Max. temperatura liquido - Max liquid temp. - Max Temperature du liquide: 60°C

pH Liquido pompato - pH pumped liquid - pH du liquide pompé: 6 - 10

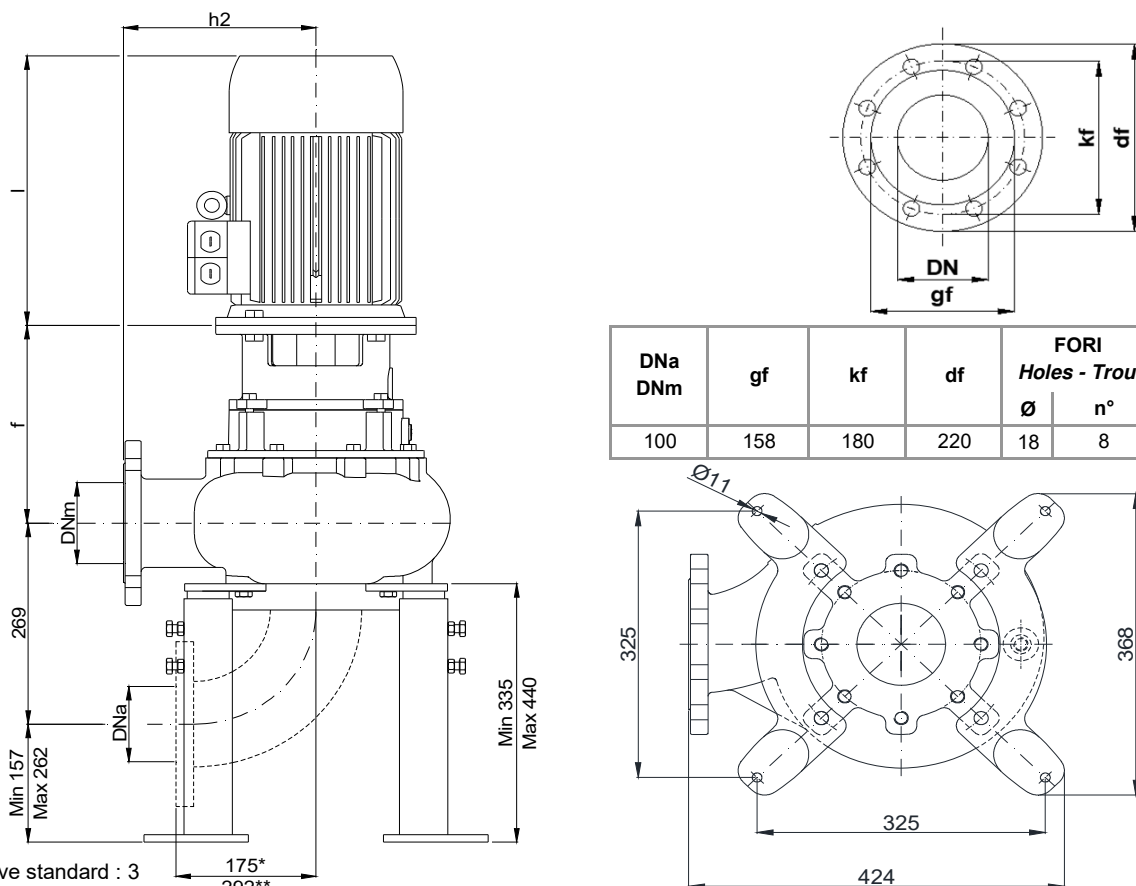
INSTALLAZIONE ORIZZONTALE - Horizontal installation - Installation Horizontale



POMPA Pumps Pompe	DNa DNm	Gr. Motore Motor size Taille du moteur	a	b	c	f	g	h1	h2	l	m1	m2	n1	n2	n3	n4	n7	n8	s1	s2	v	w
KBM 100 --	100	100	95	50	12	251	49	180	240	325	75	70	300	250	200	150	155	175	16	13	409	334

Dimensioni - Size - Dimensions in mm.

INSTALLAZIONE VERTICALE - Vertical installation - Installation verticale



DNa DNm	gf	kf	df	FORI Holes - Trou	
				Ø	n°
100	158	180	220	18	8

\* Curva dima - Curve standard : 3  
\*\* Curva dima - Curve standard: 5

KBM 100-220-1-19X

Con riserva di variazioni tecniche e costruttive senza preavviso.

With reserve of technical and constructive variations without warning. Avec réserve de variations techniques et constructives sans préavis

POMPE ROTOMECC srl - 20063 CERNUSCO SUL NAVIGLIO (MI) - ITALY - Via Ponchielli, 1

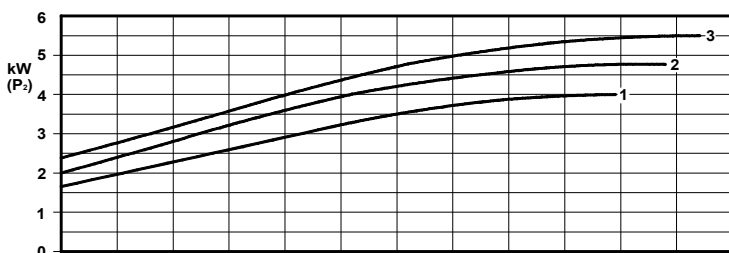
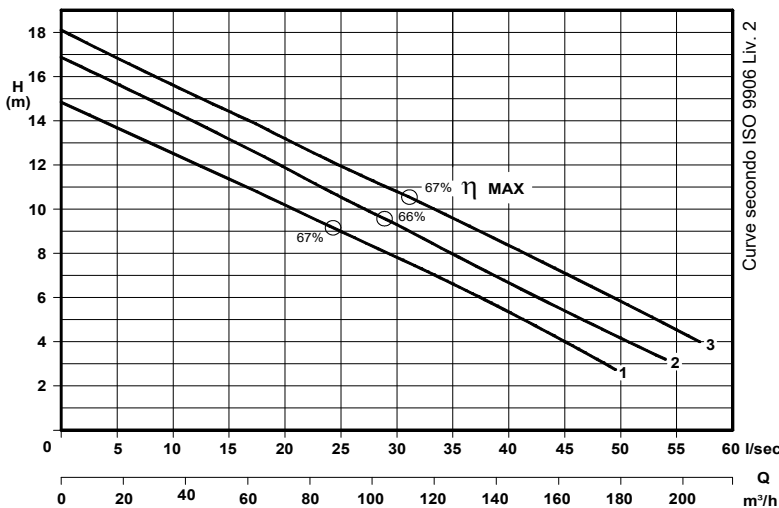
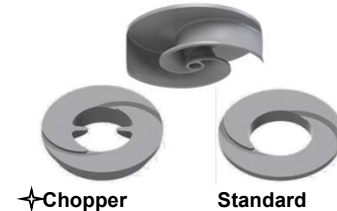
Tel. +39.02.9211.0205 - +39.02.9233.0399 Fax 02 9211.0630 Sito Internet: [www.pomperotomec.it](http://www.pomperotomec.it) E-mail: [sales@pomperotomec.it](mailto:sales@pomperotomec.it)

**Elettropompe con motore flangiato per liquidi carichi in camera asciutta**  
**Dry installed sewage electric pumps with flanged motor**  
**Electropompes pour eaux chargées en fosse sèche**



N°	CURVA - Curve - Courbe	POMPA Pump Pompe	DN	GIRI /Min - RPM - Tours/min.	POTENZA MOTORE	PESO
					Motor rating Puissance moteur	Weight Poids
1	KBM 100-202 A2 L2	100	1450		4 kW	112 Kg
2	KBM 100-215 A5 L3				5,5 kW	116 Kg
3	KBM 100-219 A5 L3					

**Girante bicanale aperta e diffusore autopulente**  
**Two channel open impeller and self-cleaning diffuser**  
**Roue à 2 canaux ouvert et anneau autonettoyant**



P2 - Potenza resa - Shaft power - Puissance sur arbre

✦ Versione chopper con diffusore a taglienti e girante induriti  
 Chopper version with cutting diffuser and impeller hardened  
 Version chopper avec anneau tranchant et roue durci

#### COSTRUZIONE - Materials - Matériaux

Fusioni principali - Principal parts - Parts principal	Ghisa - Cast iron - Fonte - GG 25
Girante - Impeller - Roue	Ghisa - Cast iron - Fonte - GS 500
Diffusore - Diffuser - Anneau	Ghisa - Cast iron - Fonte - GS 500
Albero - Shaft - Arbre	AISI 420
Viteria - Screws - Vis	AISI 304

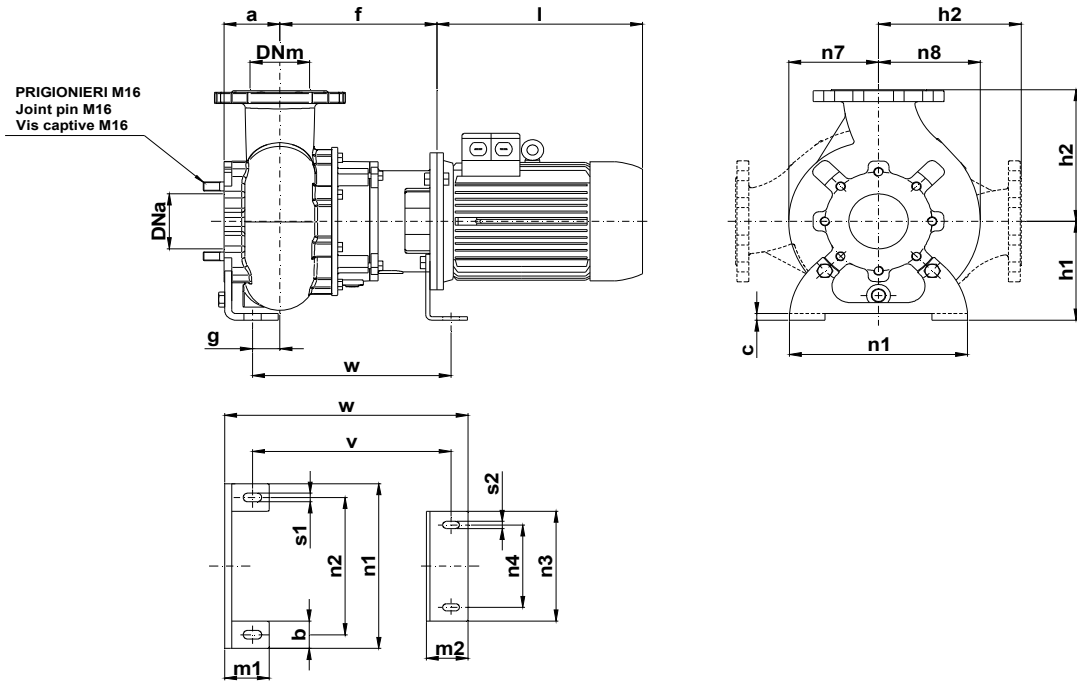
#### TENUTE MECCANICHE - Mechanical seals - Garniture mécanique

Doppia tenuta meccanica in bagno d'olio - Double mechanical seals in oil bath - Double garniture mécanique en chambre d'huile  
 Tenuta lato motore / tenuta lato liquido : carburo di silicio  
 Motor side / liquid side mechanical seal : silicon carbide  
 Garniture mécanique côté du moteur / côté liquide : carbure de silicium

#### CARATTERISTICHE TECNICHE - Technical Features - Caractéristiques Techniques

Motore - Motor - Moteur : B5 IP55      Classe isolamento - Insulating class - Isolement classe : F  
 Max. temperatura liquido - Max liquid temp. - Max Temperature du liquide: 60°C  
 pH Liquido pompato - pH pumped liquid - pH du liquide pompé: 6 - 10

**INSTALLAZIONE ORIZZONTALE - *Horizontal installation - Installation Horizontale***



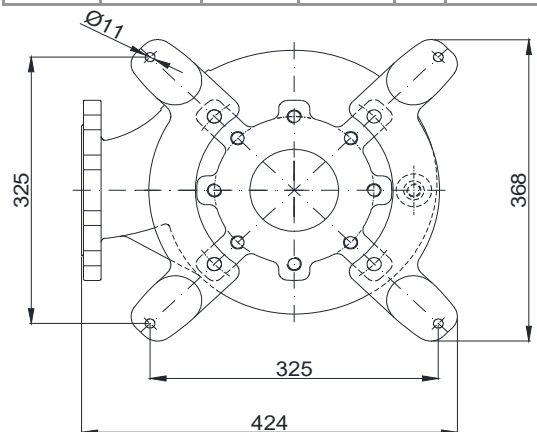
POMPA Pumps Pompe	DNa DNm	Gr. Motore Motor size Taille du moteur	a	b	c	f	g	h1	h2	l	m1	m2	n1	n2	n3	n4	n7	n8	s1	s2	v	w
KBM 100 - ....	100	112 (kW 4)	95	50	12	251	49	180	240	345	75	70	300	250	200	150	155	175	16	13	409	334
		132 (kW 5,5)				292				435												437

Dimensioni - Size - Dimensions in mm.

**INSTALLAZIONE VERTICALE - *Vertical installation - Installation verticale***



DNa DNm	gf	kf	df	FORI Holes - Trou	
				Ø	n°
100	158	180	220	18	8



\* Curva dima - Curve standard : 3  
 \*\* Curva dima - Curve standard: 5

KBM 100-220-2-19X

Con riserva di variazioni tecniche e costruttive senza preavviso.

With reserve of technical and constructive variations without warning. Avec réserve de variations techniques et constructives sans préavis

**POMPE ROTOMECC s.r.l.** - 20063 CERNUSCO SUL NAVIGLIO (MI) - ITALY - Via Ponchielli, 1

Tel. +39.02.9211.0205 - +39.02.9233.0399 Fax 02.9211.0630 Sito Internet: [www.pomperotomec.it](http://www.pomperotomec.it) E-mail: [sales@pomperotomec.it](mailto:sales@pomperotomec.it)

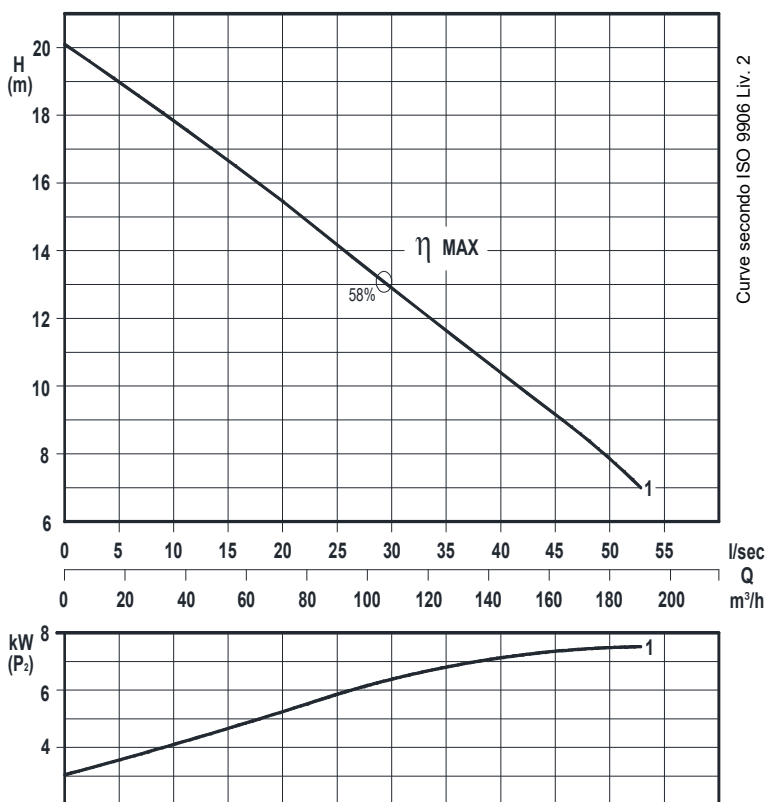
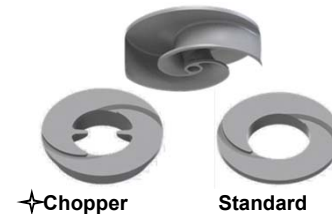


Elettropompe con motore flangiato per liquidi carichi in camera asciutta  
*Dry installed sewage electric pumps with flanged motor*  
*Electropompes pour eaux chargées en fosse sèche*



N°	CURVA - Curve - Courbe POMPA Pump Pompe	DN	GIRI /Min - RPM - Tours/min.	POTENZA MOTORE	PESO
				Motor rating Puissance moteur	Weight Poids
1	KBM 100-228 A4 L3	100	1450	7,5 kW	183 Kg

Girante bicanale aperta e diffusore autopulente  
*Two channel open impeller and self-cleaning diffuser*  
*Roue à 2 canaux ouvert et anneau autonettoyant*



✦ Versione chopper con diffusore a taglienti e girante induriti  
*Chopper version with cutting diffuser and impeller hardened*  
*Version chopper avec anneau tranchant et roue durci*

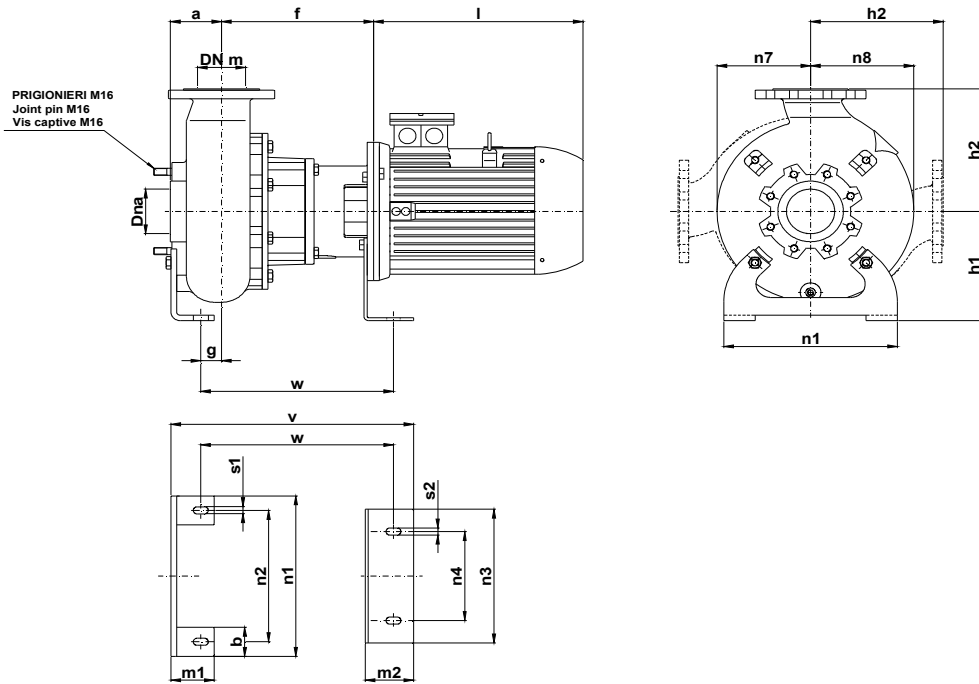
P2 - Potenza resa - Shaft power - Puissance sur arbre

COSTRUZIONE - Materials - Matériaux	
Fusioni principali - Principal parts - Parts principal	Ghisa - Cast iron - Fonte - GG 25
Girante - Impeller - Roue	Ghisa - Cast iron - Fonte - GS 500
Diffusore - Diffuser - Anneau	Ghisa - Cast iron - Fonte - GS 500
Albero - Shaft - Arbre	AISI 420
Viteria - Screws - Vis	AISI 304

TENUTE MECCANICHE - Mechanical seals - Garniture mécanique
Doppia tenuta meccanica in bagno d'olio - Double mechanical seals in oil bath - Double garniture mécanique en chambre d'huile
Tenuta lato motore / tenuta lato liquido : carburo di silicio <i>Motor side / liquid side mechanical seal : silicon carbide</i>
Garniture mécanique côté du moteur / côté liquide : carbure de silicium

CARATTERISTICHE TECNICHE - Technical Features - Caractéristiques Techniques	
Motore - Motor - Moteur : B5 IP55	Classe isolamento - Insulating class - Isolement classe : F
Max. temperatura liquido - Max liquid temp. - Max Temperature du liquide: 60°C	
pH Liquido pompato - pH pumped liquid - pH du liquide pompé: 6 - 10	

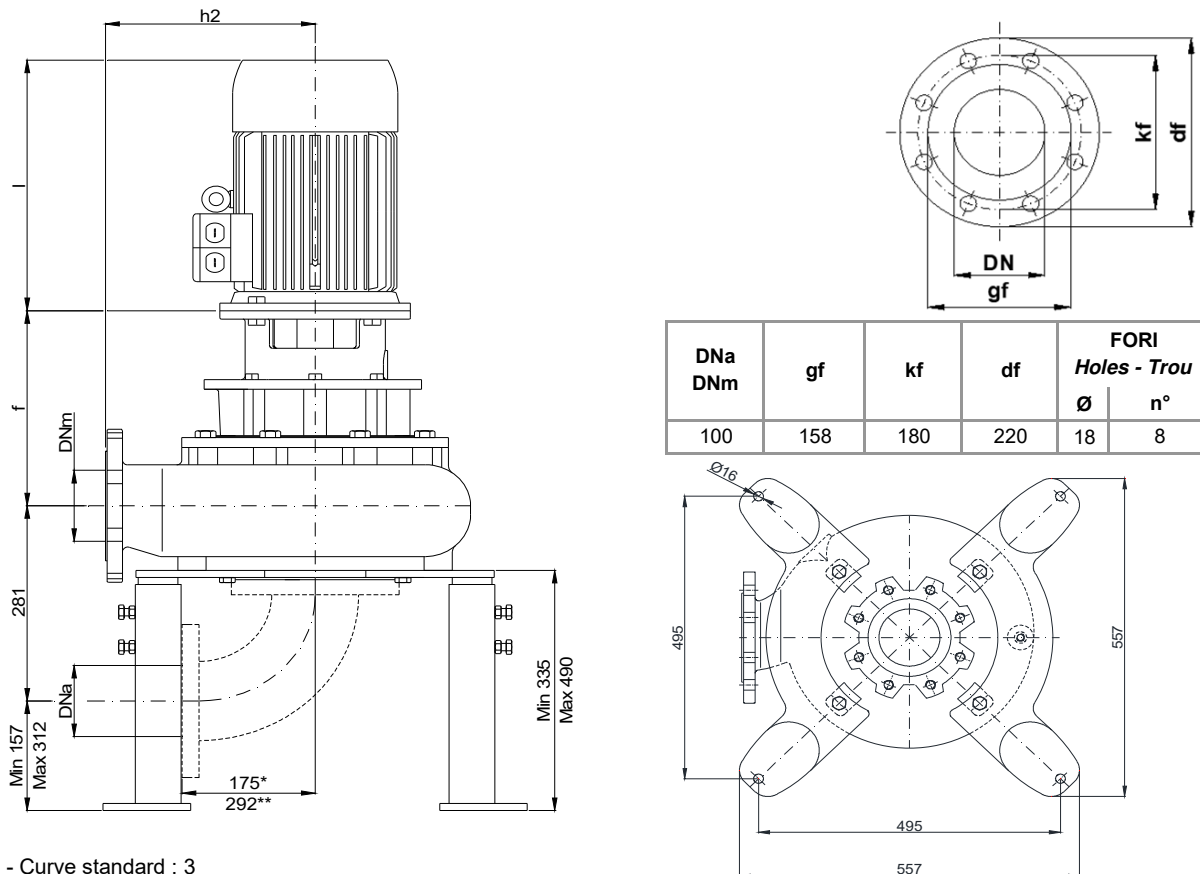
**INSTALLAZIONE ORIZZONTALE - *Horizontal installation - Installation Horizontale***



POMPA Pumps Pompe	DNa DNm	Gr. Motore Motor size Taille du moteur	a	b	c	f	g	h1	h2	l	m1	m2	n1	n2	n3	n4	n7	n8	s1	s2	v	w
KBM 100 - ....	100	132	105	70	12	315	48	245	275	435	100	100	400	330	300	200	195	215	18	18	502	400

Dimensioni - Size - Dimensions in mm.

**INSTALLAZIONE VERTICALE - *Vertical installation - Installation verticale***



DNa DNm	gf	kf	df	FORI Holes - Trou	
				Ø	n°
100	158	180	220	18	8

\* Curva dima - Curve standard : 3

\*\* Curva dima - Curve standard: 5

KBM 100/4-280-1-19X.0

Con riserva di variazioni tecniche e costruttive senza preavviso.

With reserve of technical and constructive variations without warning. Avec réserve de variations techniques et constructives sans préavis

**POMPE ROTOMECC srl** - 20063 CERNUSCO SUL NAVIGLIO (MI) - ITALY - Via Ponchielli, 1

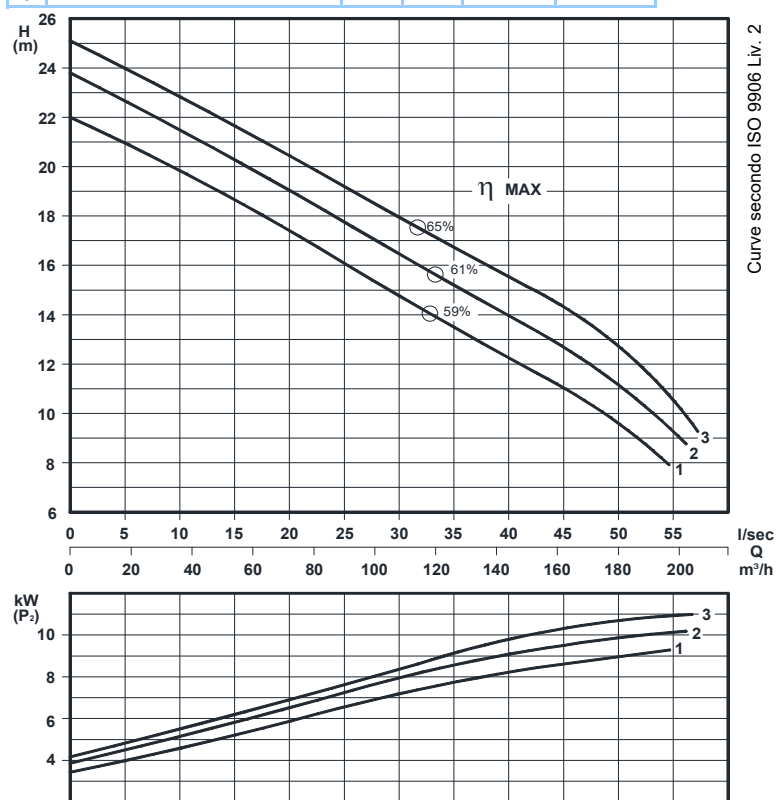
Tel. +39.02.9211.0205 - +39.02.9233.0399 Fax 02 9211.0630 Sito Internet: [www.pomperotomec.it](http://www.pomperotomec.it) E-mail: [sales@pomperotomec.it](mailto:sales@pomperotomec.it)

**Elettropompe con motore flangiato per liquidi carichi in camera asciutta**  
**Dry installed sewage electric pumps with flanged motor**  
**Electropompes pour eaux chargées en fosse sèche**



CURVA - Curve - Courbe	POMPA Pump Pompe	DN	GIRI /Min - RPM - Tours/min.	POTENZA MOTORE	PESO
				Motor rating Puissance moteur	Weight Poids
N°				kW	Kg
1	KBM 100-240 A6 L4	100	1450	11	193
2	KBM 100-250 A6 L4				
3	KBM 100-255 A6 L4				

**Girante bicanale aperta e diffusore autopulente**  
**Two channel open impeller and self-cleaning diffuser**  
**Roue à 2 canaux ouvert et anneau autonettoyant**



✦ **Versione chopper con diffusore a taglienti e girante indurite**  
**Chopper version with cutting diffuser and impeller hardened**  
**Version chopper avec anneau tranchant et roue durci**

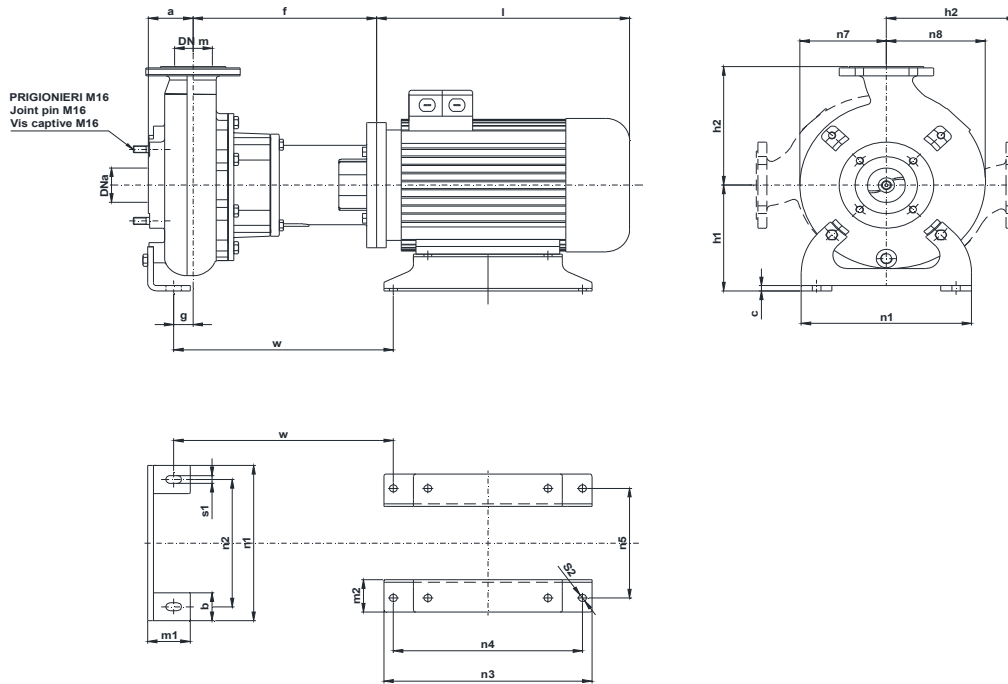
P2 - Potenza resa - Shaft power - Puissance sur arbre

COSTRUZIONE - Materials - Matériaux	
Fusioni principali - Principal parts - Parts principal	Ghisa - Cast iron - Fonte - GG 25
Girante - Impeller - Roue	Ghisa - Cast iron - Fonte - GS 500
Diffusore - Diffuser - Anneau	Ghisa - Cast iron - Fonte - GS 500
Albero - Shaft - Arbre	AISI 420
Viteria - Screws - Vis	AISI 304

TENUTE MECCANICHE - Mechanical seals - Garniture mécanique
Doppia tenuta meccanica in bagno d'olio - Double mechanical seals in oil bath - Double garniture mécanique en chambre d'huile
Tenuta lato motore / tenuta lato liquido : carburo di silicio
Motor side / liquid side mechanical seal : silicon carbide
Garniture mécanique côté du moteur / côté liquide : carbure de silicium

CARATTERISTICHE TECNICHE - Technical Features - Caractéristiques Techniques	
Motore - Motor - Moteur : B5 IP55	Classe isolamento - Insulating class - Isolement classe : F
Max. temperatura liquido - Max liquid temp. - Max Temperature du liquide: 60°C	
pH Liquido pompato - pH pumped liquid - pH du liquide pompé: 6 - 10	

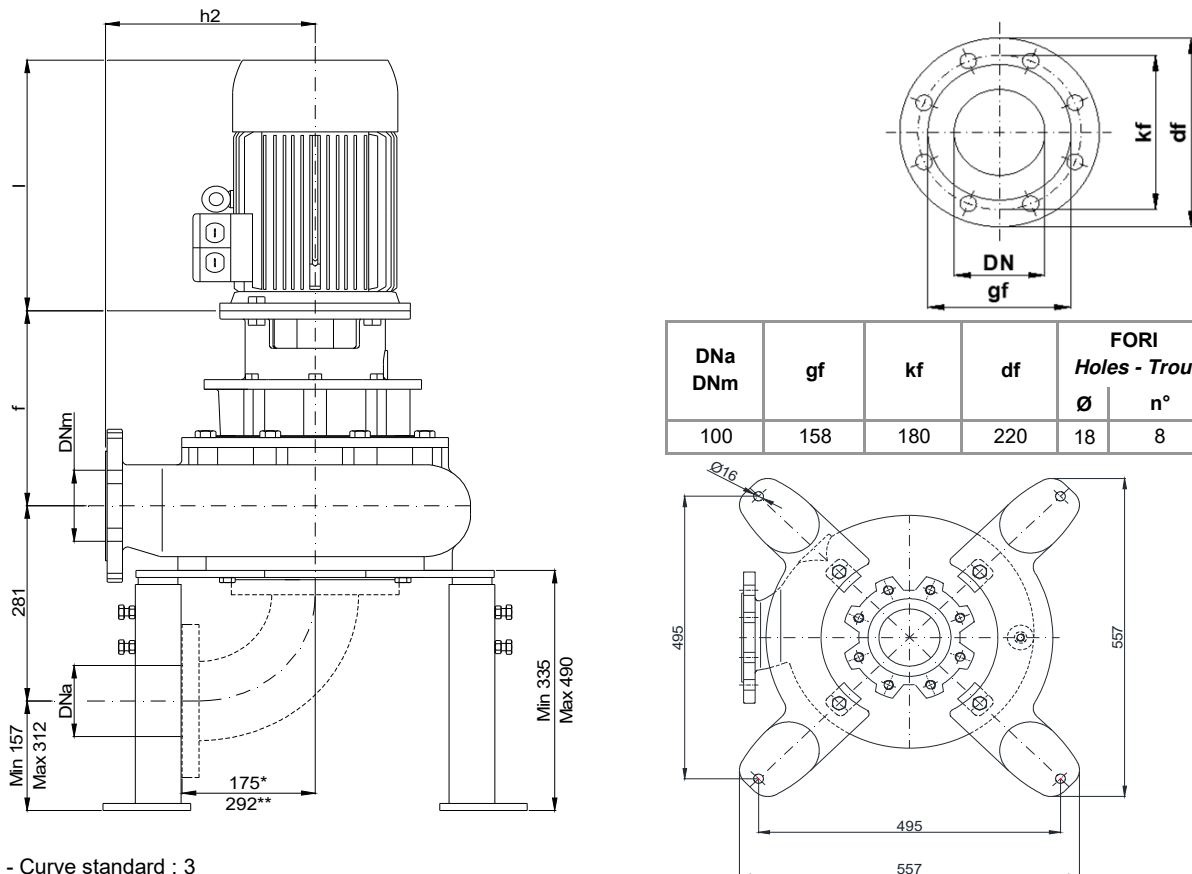
INSTALLAZIONE ORIZZONTALE - Horizontal installation - Installation Horizontale



POMPA Pumps Pompe	DNa DNm	Gr. Motore Motor size Taille du moteur	a	b	c	f	g	h1	h2	i	m1	m2	n1	n2	n3	n4	n5	n7	n8	s1	s2	w
KBM 100 - ....	100	160 M	105	70	12	398	48	245	275	545	100	100	400	330	440	210	254	195	215	18	16,5	460

Dimensioni - Size - Dimensions in mm.

INSTALLAZIONE VERTICALE - Vertical installation - Installation verticale



DNa DNm	gf	kf	df	FORI Holes - Trou	
				Ø	n°
100	158	180	220	18	8

\* Curva dima - Curve standard : 3

\*\* Curva dima - Curve standard: 5

KBM 100/4-280-2-19X.0

Con riserva di variazioni tecniche e costruttive senza preavviso.

With reserve of technical and constructive variations without warning. Avec réserve de variations techniques et constructives sans préavis

**POMPE ROTOMECC s.r.l.** - 20063 CERNUSCO SUL NAVIGLIO (MI) - ITALY - Via Ponchielli, 1

Tel. +39.02.9211.0205 - +39.02.9233.0399 Fax 02 9211.0630 Sito Internet: [www.pomperotomec.it](http://www.pomperotomec.it) E-mail: [sales@pomperotomec.it](mailto:sales@pomperotomec.it)

Elettropompe con motore flangiato per liquidi carichi in camera asciutta

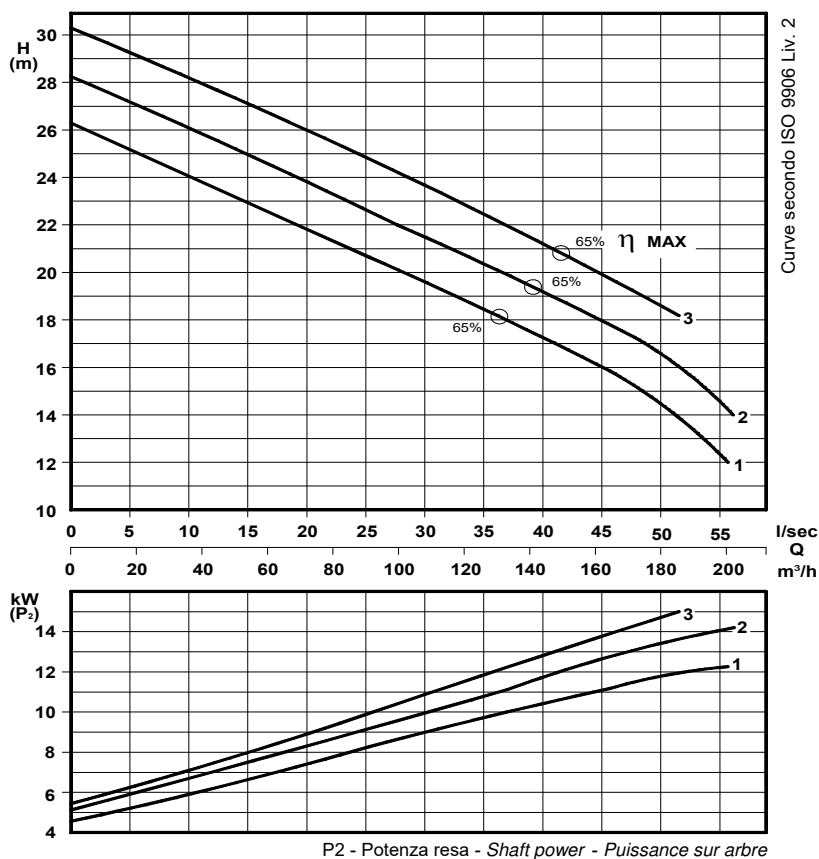
*Dry installed sewage electric pumps with flanged motor*

*Electropompes pour eaux chargées en fosse sèche*



N°	CURVA - Curve - Courbe	POMPA Pump Pompe		DN	GIRI / Min - RPM - Tours/min.	POTENZA MOTORE Motor rating Puissance moteur	PESO Weight Poids
1	KBM 100-260 A6 L4			100	1450	15	213
2	KBM 100-270 A6 L4						
3	KBM 100-279 A6 L4						

Girante bicanale aperta e diffusore autopulente  
*Two channel open impeller and self-cleaning diffuser*  
*Roue à 2 canaux ouvert et anneau autonettoyant*



✦ Versione chopper con diffusore a taglienti e girante indurite  
*Chopper version with cutting diffuser and impeller hardened*  
*Version chopper avec anneau tranchant et roue durci*

#### COSTRUZIONE - Materials - Matériaux

Fusioni principali - <i>Principal parts - Parts principal</i>	Ghisa - <i>Cast iron - Fonte - GG 25</i>
Girante - <i>Impeller - Roue</i>	Ghisa - <i>Cast iron - Fonte - GS 500</i>
Diffusore - <i>Diffuser - Anneau</i>	Ghisa - <i>Cast iron - Fonte - GS 500</i>
Albero - <i>Shaft - Arbre</i>	AISI 420
Viteria - <i>Screws - Vis</i>	AISI 304

#### TENUTE MECCANICHE - Mechanical seals - Garniture mécanique

Doppia tenuta meccanica in bagno d'olio - *Double mechanical seals in oil bath - Double garniture mécanique en chambre d'huile*

Tenuta lato motore / tenuta lato liquido : carburo di silicio

*Motor side / liquid side mechanical seal : silicon carbide*

*Garniture mécanique côté du moteur / côté liquide : carbure de silicium*

#### CARATTERISTICHE TECNICHE - Technical Features - Caractéristiques Techniques

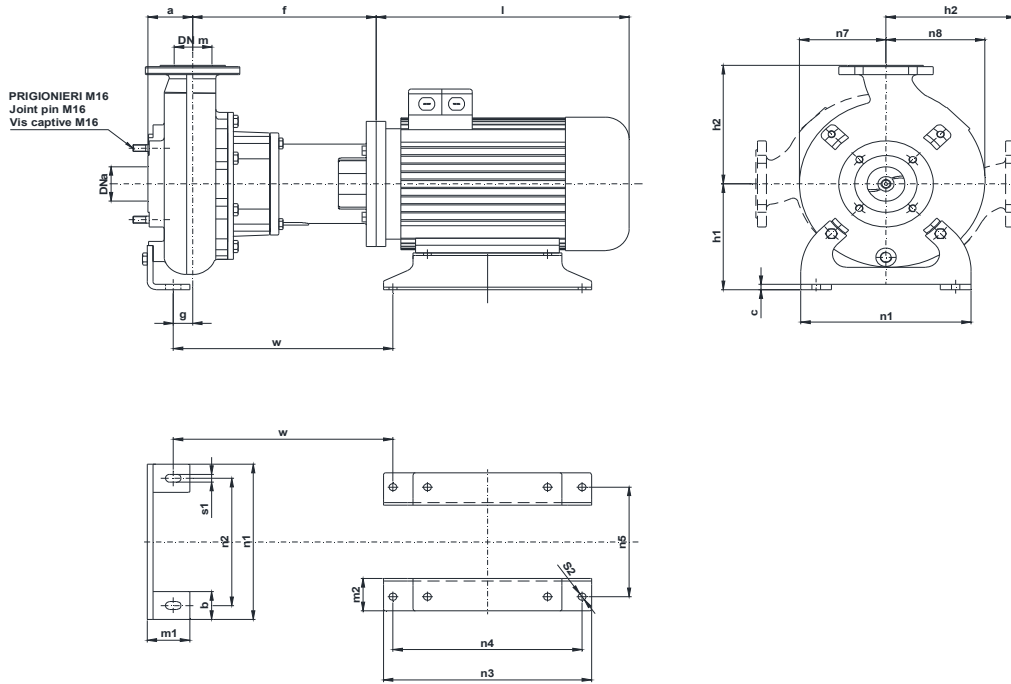
Motore - *Motor - Moteur* : B5 IP55

Classe isolamento - *Insulating class - Isolement classe* : F

Max. temperatura liquido - *Max liquid temp. - Max Temperature du liquide*: 60°C

pH Liquido pompato - *pH pumped liquid - pH du liquide pompé*: 6 - 10

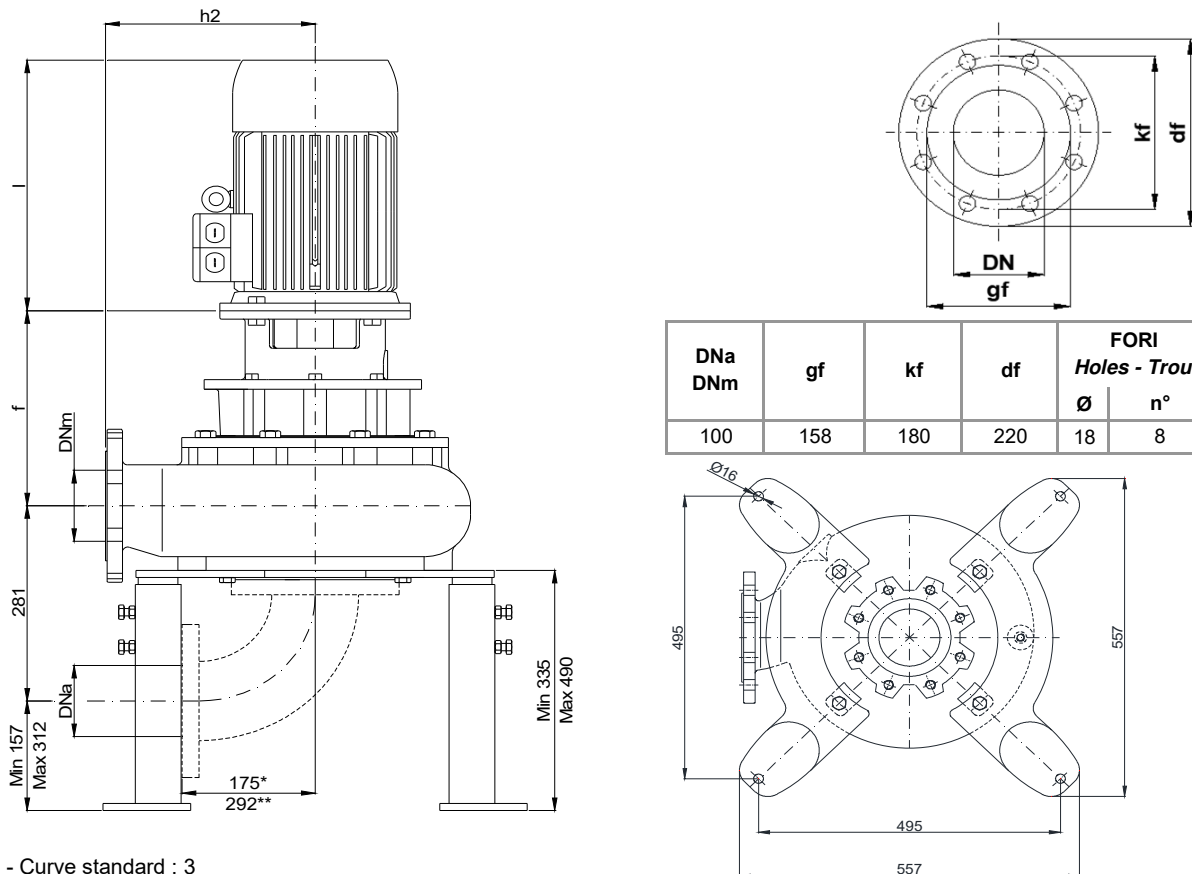
INSTALLAZIONE ORIZZONTALE - Horizontal installation - Installation Horizontale



POMPA Pumps Pompe	DNa DNm	Gr. Motore Motor size Taille du moteur	a	b	c	f	g	h1	h2	l	m1	m2	n1	n2	n3	n4	n5	n7	n8	s1	s2	w
KBM 100 - ....	100	160 L	105	70	12	398	48	245	275	570	100	105	400	330	440	254	254	195	215	18	16,5	480

Dimensioni - Size - Dimensions in mm.

INSTALLAZIONE VERTICALE - Vertical installation - Installation verticale



DNa DNm	gf	kf	df	FORI Holes - Trou	
				Ø	n°
100	158	180	220	18	8

\* Curva dima - Curve standard : 3

\*\* Curva dima - Curve standard: 5

KBM 100/4-280-3-19X.0

Con riserva di variazioni tecniche e costruttive senza preavviso.

With reserve of technical and constructive variations without warning. Avec réserve de variations techniques et constructives sans préavis

POMPE ROTOMECC srl - 20063 CERNUSCO SUL NAVIGLIO (MI) - ITALY - Via Ponchielli, 1

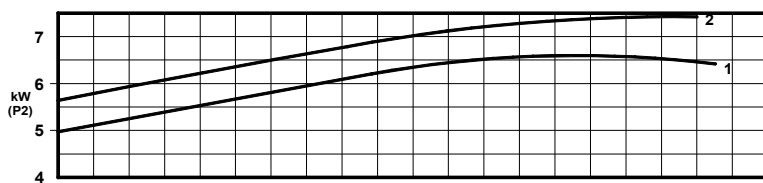
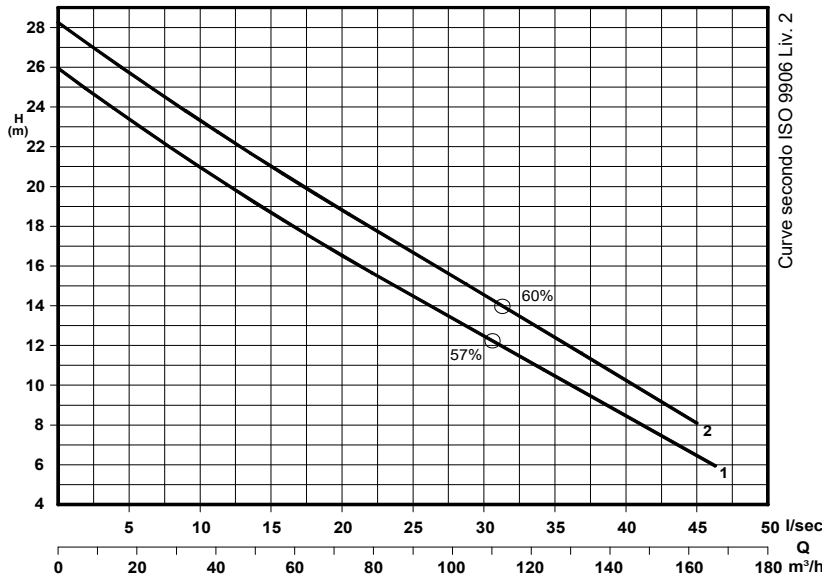
Tel. +39.02.9211.0205 - +39.02.9233.0399 Fax 02 9211.0630 Sito Internet: [www.pomperotomec.it](http://www.pomperotomec.it) E-mail: [sales@pomperotomec.it](mailto:sales@pomperotomec.it)

**Elettropompe con motore flangiato per liquidi carichi in camera asciutta**  
*Dry installed sewage electric pumps with flanged motor*  
*Electropompes pour eaux chargées en fosse sèche*



N°	CURVA - Curve - Courbe POMPA Pump Pompe	DN		POTENZA MOTORE Motor rating Puissance moteur	PESO Weight Poids
		GIRI /Min - RPM - Tours/min.		kW	Kg
1	KBM 100/2-150 A5 L3	100	2900	7,5	124
2	KBM 100/2-156 A5 L3				

**Girante bicanale aperta e diffusore autopulente**  
*Two channel open impeller and self-cleaning diffuser*  
*Roue à 2 canaux ouvert et anneau autonettoyant*



P<sub>2</sub> - Potenza resa - Shaft power - Puissance sur arbre

✦ Versione chopper con diffusore a taglienti e girante induriti  
*Chopper version with cutting diffuser and impeller hardened*  
*Version chopper avec anneau tranchant et roue durci*

### COSTRUZIONE - Materials - Matériaux

Fusioni principali - <i>Principal parts - Parts principal</i>	Ghisa - <i>Cast iron - Fonte - GG 25</i>
Girante - <i>Impeller - Roue</i>	Ghisa - <i>Cast iron - Fonte - GS 500</i>
Diffusore - <i>Diffuser - Anneau</i>	Ghisa - <i>Cast iron - Fonte - GS 500</i>
Albero - <i>Shaft - Arbre</i>	AISI 420
Viteria - <i>Screws - Vis</i>	AISI 304

### TENUTE MECCANICHE - Mechanical seals - Garniture mécanique

Doppia tenuta meccanica in bagno d'olio - *Double mechanical seals in oil bath - Double garniture mécanique en chambre d'huile*

Tenuta lato motore / tenuta lato liquido : carburo di silicio

*Motor side / liquid side mechanical seal : silicon carbide*

*Garniture mécanique côté du moteur / côté liquide : carbure de silicium*

### CARATTERISTICHE TECNICHE - Technical Features - Caractéristiques Techniques

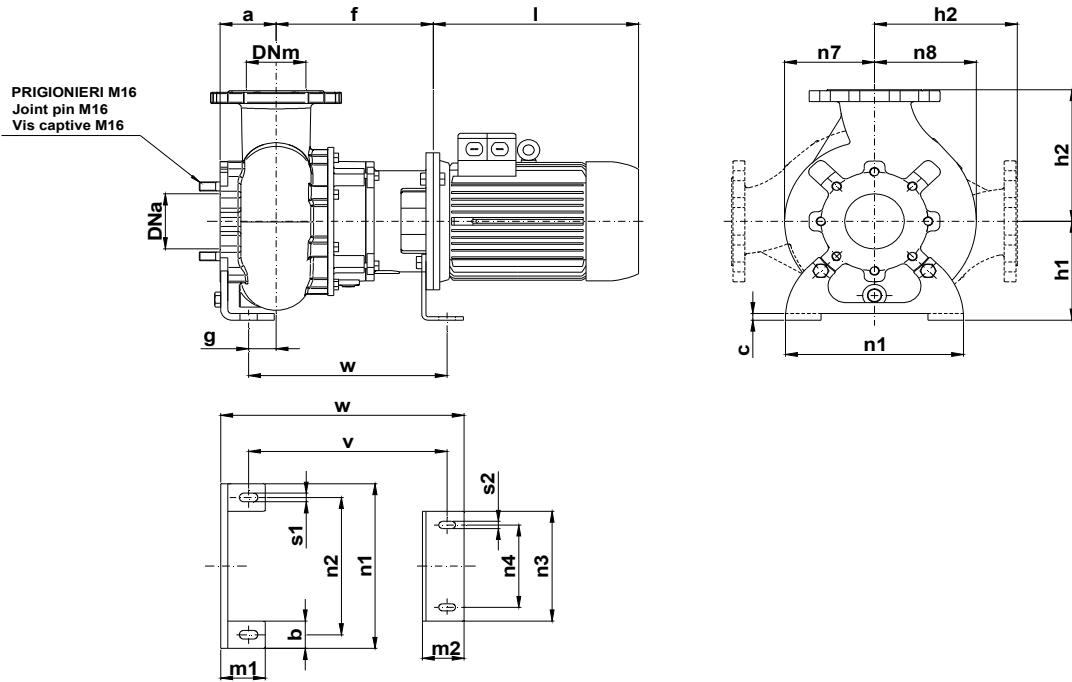
Motore - *Motor - Moteur* : B5 IP55

Classe isolamento - *Insulating class - Isolement classe* : F

Max. temperatura liquido - *Max liquid temp. - Max Temperature du liquide*: 60°C

pH Liquido pompato - *pH pumped liquid - pH du liquide pompé*: 6 - 10

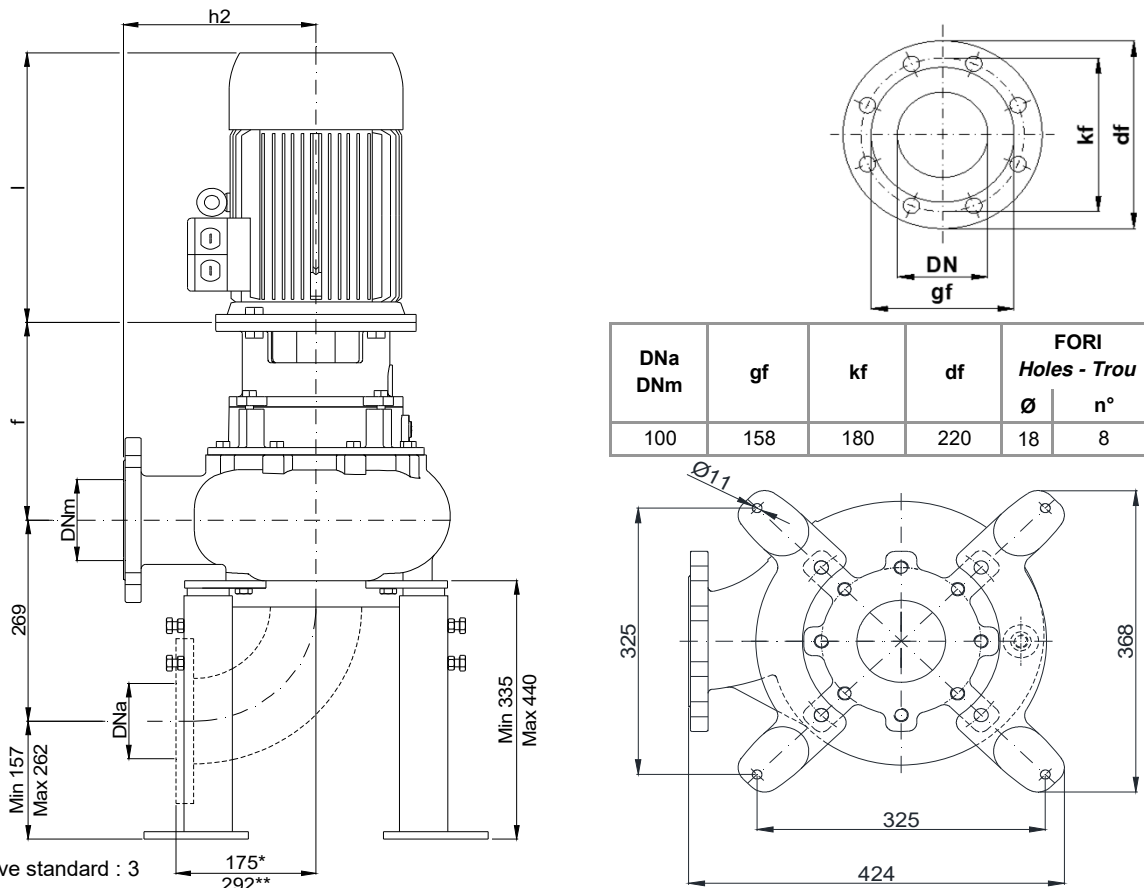
**INSTALLAZIONE ORIZZONTALE - *Horizontal installation - Installation Horizontale***



POMPA Pumps Pompe	DNa DNm	Gr. Motore Motor size Taille du moteur	a	b	c	f	g	h1	h2	l	m1	m2	n1	n2	n3	n4	n7	n8	s1	s2	v	w
KBM 100 --	100	132	95	50	12	292	49	180	240	435	75	70	300	250	200	150	155	175	16	13	437	362

Dimensioni - Size - Dimensions in mm.

**INSTALLAZIONE VERTICALE - *Vertical installation - Installation verticale***



DNa DNm	gf	kf	df	FORI Holes - Trou	
				Ø	n°
100	158	180	220	18	8

\* Curva dima - Curve standard : 3  
 \*\* Curva dima - Curve standard: 5

KBM 100/2-220-1-19X

Con riserva di variazioni tecniche e costruttive senza preavviso.

With reserve of technical and constructive variations without warning. Avec réserve de variations techniques et constructives sans préavis

**POMPE ROTOMECH srl** - 20063 CERNUSCO SUL NAVIGLIO (MI) - ITALY - Via Ponchielli, 1

Tel. +39.02.9211.0205 - +39.02.9233.0399 Fax 02 9211.0630 Sito Internet: [www.pomperotomec.it](http://www.pomperotomec.it) E-mail: [sales@pomperotomec.it](mailto:sales@pomperotomec.it)

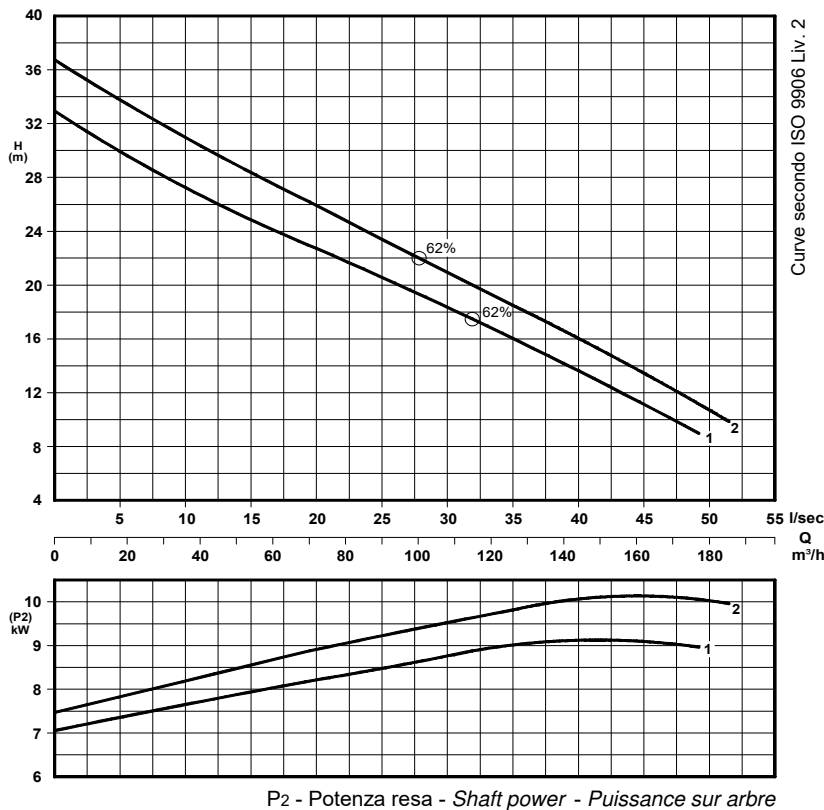
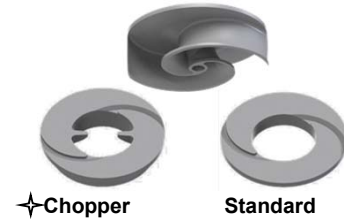


Elettropompe con motore flangiato per liquidi carichi in camera asciutta  
*Dry installed sewage electric pumps with flanged motor*  
*Electropompes pour eaux chargées en fosse sèche*



N°	CURVA - Curve - Courbe POMPA Pump Pompe	DN		POTENZA MOTORE Motor rating Puissance moteur	PESO Weight Poids
		GIRI /Min - RPM - Tours/min.		kW	Kg
1	KBM 100/2-164 A5 L3	100	2900	11	136
2	KBM 100/2-170 A5 L3				

Girante bicanale aperta e diffusore autopulente  
*Two channel open impeller and self-cleaning diffuser*  
*Roue à 2 canaux ouvert et anneau autonettoyant*



✦ Versione chopper con diffusore a taglienti e girante induriti  
*Chopper version with cutting diffuser and impeller hardened*  
*Version chopper avec anneau tranchant et roue durci*

#### COSTRUZIONE - Materials - Matériaux

Fusioni principali - Principal parts - Parts principal	Ghisa - Cast iron - Fonte - GG 25
Girante - Impeller - Roue	Ghisa - Cast iron - Fonte - GS 500
Diffusore - Diffuser - Anneau	Ghisa - Cast iron - Fonte - GS 500
Albero - Shaft - Arbre	AISI 420
Viteria - Screws - Vis	AISI 304

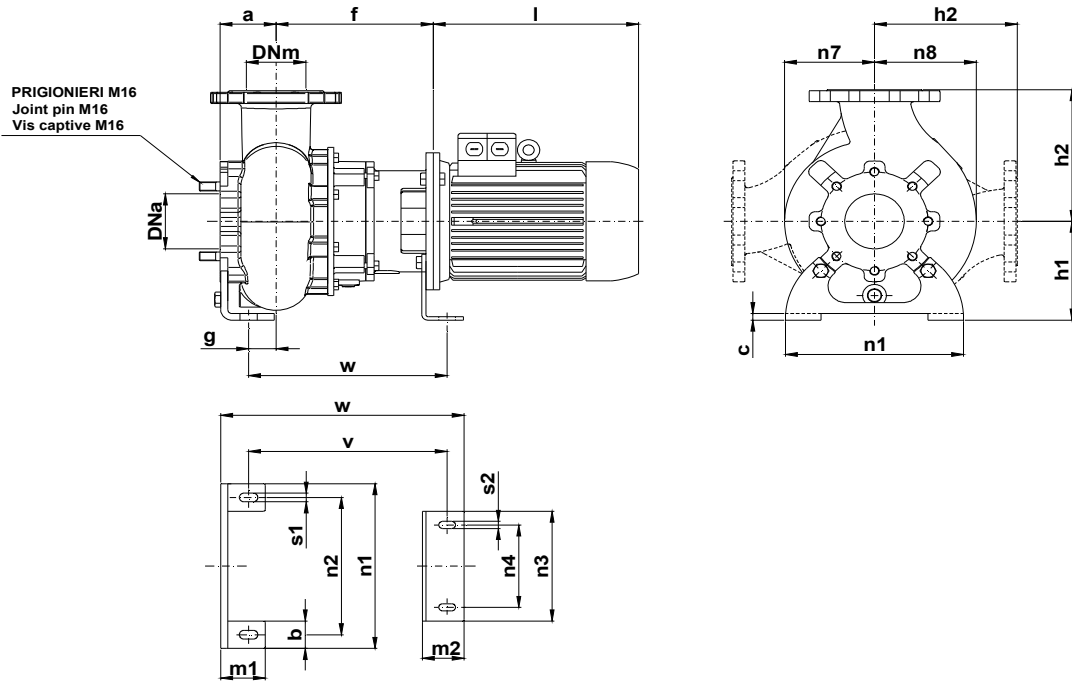
#### TENUTE MECCANICHE - Mechanical seals - Garniture mécanique

Doppia tenuta meccanica in bagno d'olio - Double mechanical seals in oil bath - Double garniture mécanique en chambre d'huile  
 Tenuta lato motore / tenuta lato liquido : carburo di silicio  
*Motor side / liquid side mechanical seal : silicon carbide*  
*Garniture mécanique côté du moteur / côté liquide : carbure de silicium*

#### CARATTERISTICHE TECNICHE - Technical Features - Caractéristiques Techniques

Motore - Motor - Moteur : B5 IP55      Classe isolamento - Insulating class - Isolement classe : F  
 Max. temperatura liquido - Max liquid temp. - Max Temperature du liquide: 60°C  
 pH Liquido pompato - pH pumped liquid - pH du liquide pompé: 6 - 10

**INSTALLAZIONE ORIZZONTALE - *Horizontal installation - Installation Horizontale***



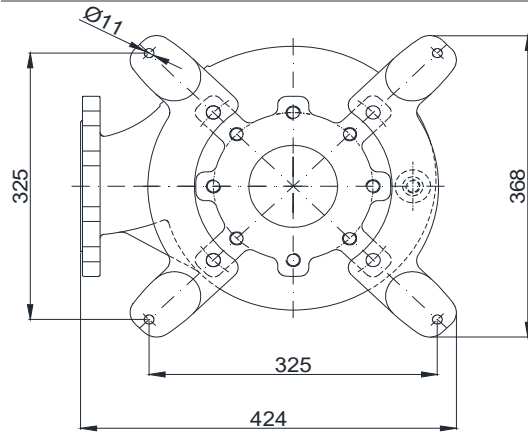
POMPA Pumps Pompe	DNa DNm	Gr. Motore Motor size Taille du moteur	a	b	c	f	g	h1	h2	i	m1	m2	n1	n2	n3	n4	n7	n8	s1	s2	v	w
KBM 100 --	100	132	95	50	12	292	49	180	240	435	75	70	300	250	200	150	155	175	16	13	437	362

Dimensioni - Size - Dimensions in mm.

**INSTALLAZIONE VERTICALE - *Vertical installation - Installation verticale***



DNa DNm	gf	kf	df	FORI Holes - Trou	
				Ø	n°
100	158	180	220	18	8



\* Curva dima - Curve standard : 3  
 \*\* Curva dima - Curve standard: 5

KBM 100/2-220-2-19X

Con riserva di variazioni tecniche e costruttive senza preavviso.

With reserve of technical and constructive variations without warning. Avec réserve de variations techniques et constructives sans préavis

**POMPE ROTOMECC s.r.l.** - 20063 CERNUSCO SUL NAVIGLIO (MI) - ITALY - Via Ponchielli, 1

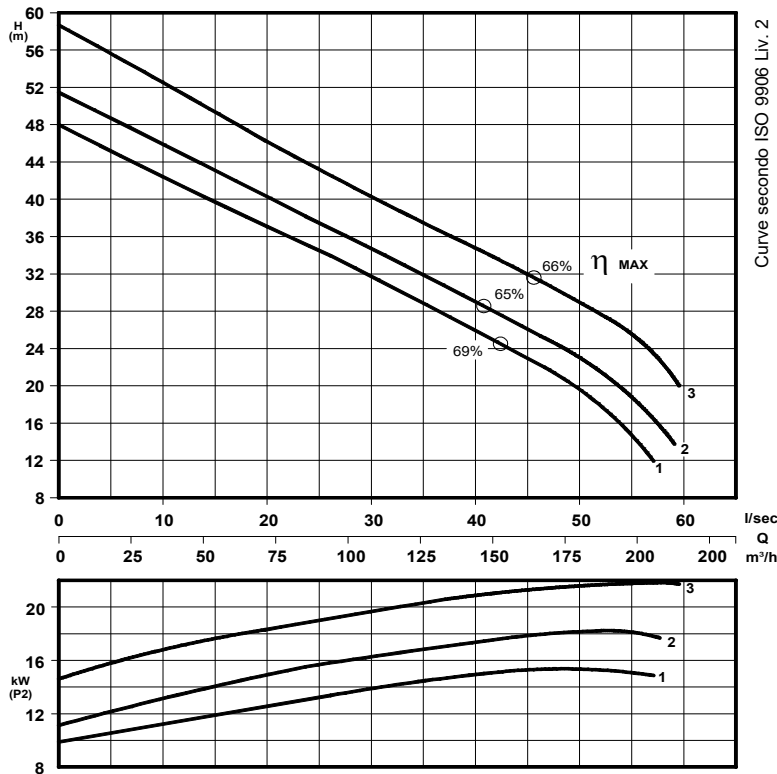
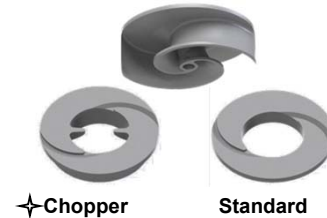
Tel. +39.02.9211.0205 - +39.02.9233.0399 Fax 02.9211.0630 Sito Internet: [www.pomperotomec.it](http://www.pomperotomec.it) E-mail: [sales@pomperotomec.it](mailto:sales@pomperotomec.it)

**Elettropompe con motore flangiato per liquidi carichi in camera asciutta**  
**Dry installed sewage electric pumps with flanged motor**  
**Electropompes pour eaux chargées en fosse sèche**



N°	CURVA - Curve - Courbe	POMPA Pump Pompe	DN		GIRI /Min - RPM - Tours/min.	POTENZA MOTORE Motor rating Puissance moteur	PESO Weight Poids
1	KBM 100/2-192 A6 L4		100	2900		18,5	158
2	KBM 100/2-200 A7 L4					22	190
3	KBM 100/2-206 A7 L4						

**Girante bicanale aperta e diffusore autopulente**  
**Two channel open impeller and self-cleaning diffuser**  
**Roue à 2 canaux ouvert et anneau autonettoyant**



✦ Versione chopper con diffusore a taglianti e girante induriti  
 Chopper version with cutting diffuser and impeller hardened  
 Version chopper avec anneau tranchant et roue durci

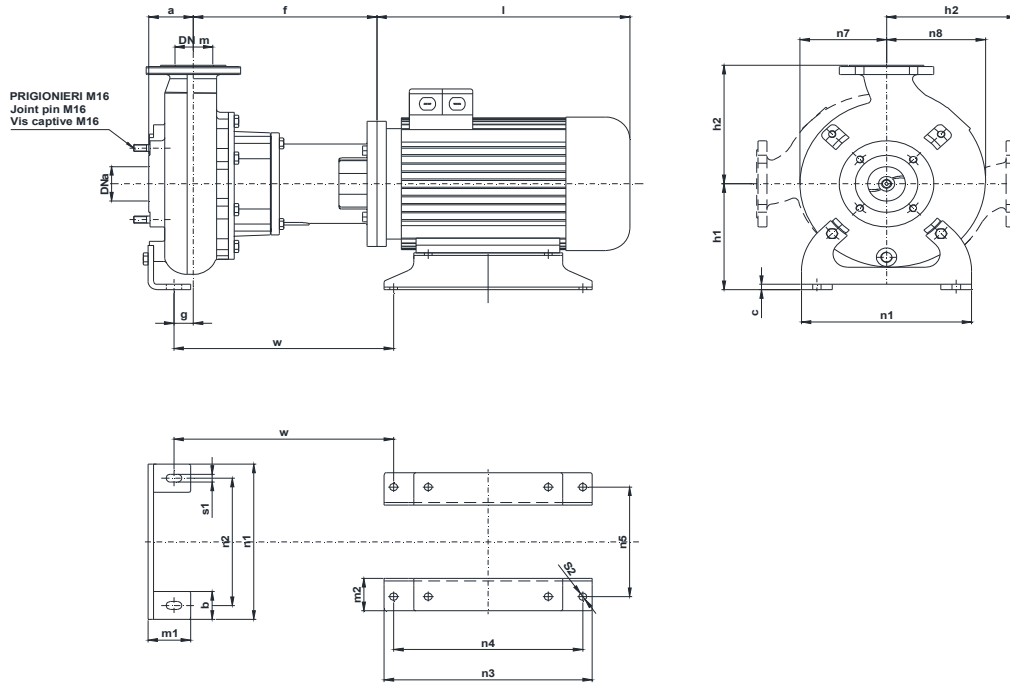
P<sub>2</sub> - Potenza resa - Shaft power - Puissance sur arbre

COSTRUZIONE - Materials - Matériaux	
Fusioni principali - Principal parts - Parts principal	Ghisa - Cast iron - Fonte - GG 25
Girante - Impeller - Roue	Ghisa - Cast iron - Fonte - GS 500
Diffusore - Diffuser - Anneau	Ghisa - Cast iron - Fonte - GS 500
Albero - Shaft - Arbre	AISI 420
Viteria - Screws - Vis	AISI 304

TENUTE MECCANICHE - Mechanical seals - Garniture mécanique
Doppia tenuta meccanica in bagno d'olio - Double mechanical seals in oil bath - Double garniture mécanique en chambre d'huile
Tenuta lato motore / tenuta lato liquido : carburo di silicio Motor side / liquid side mechanical seal : silicon carbide Garniture mécanique côté du moteur / côté liquide : carbure de silicium

CARATTERISTICHE TECNICHE - Technical Features - Caractéristiques Techniques	
Motore - Motor - Moteur : B5 IP55	Classe isolamento - Insulating class - Isolement classe : F
Max. temperatura liquido - Max liquid temp. - Max Temperature du liquide: 60°C	
pH Liquido pompato - pH pumped liquid - pH du liquide pompé: 6 - 10	

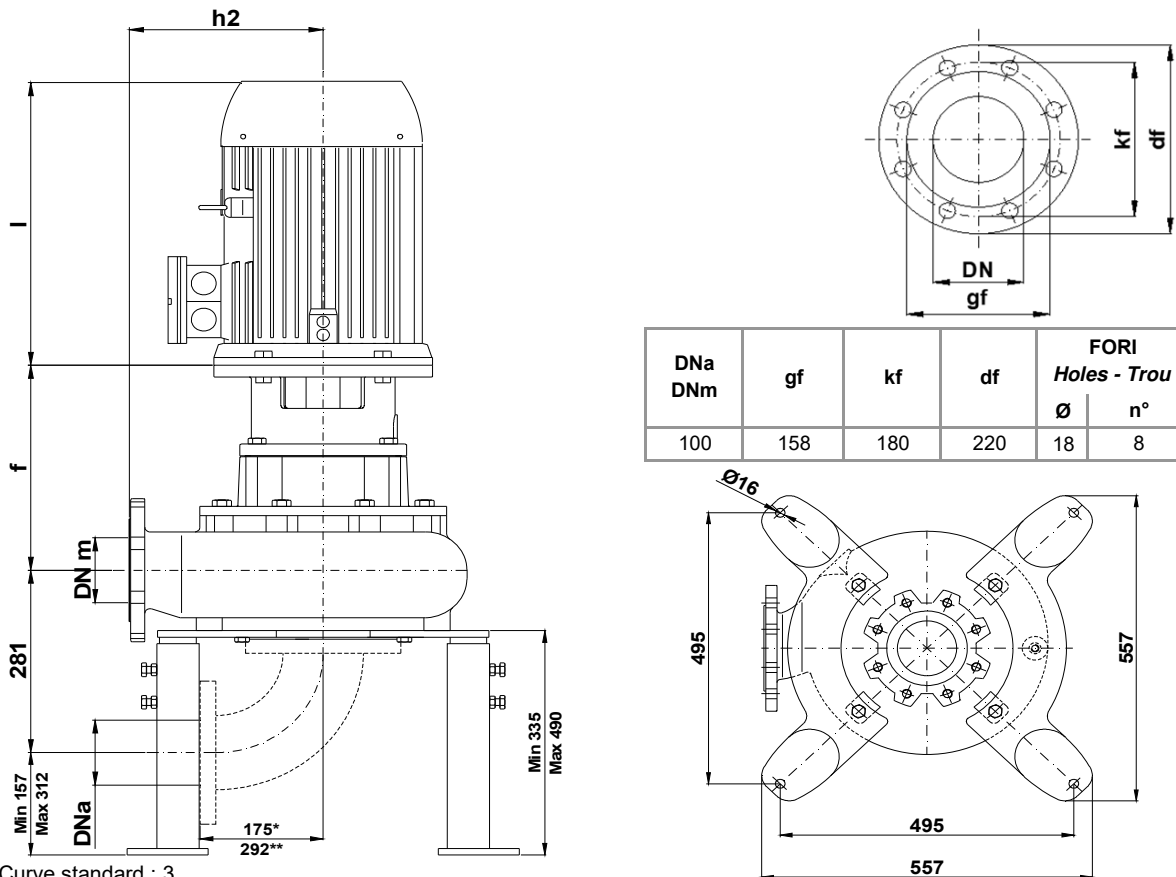
**INSTALLAZIONE ORIZZONTALE - *Horizontal installation - Installation Horizontale***



POMPA Pumps Pompe	DNa DNm	Gr. Motore Motor size Taille du moteur	a	b	c	f	g	h1	h2	l	m1	m2	n1	n2	n3	n4	n5	n7	n8	s1	s2	w
KBM 100 ..	100	160 L (kW 18,5)	105	70	12	398	48	245	275	570	100	105	400	330	440	254	254	195	215	18	16,5	480
		615								241						279	487					

Dimensioni - Size - Dimensions in mm.

**INSTALLAZIONE VERTICALE - *Vertical installation - Installation verticale***



DNa DNm	gf	kf	df	FORI Holes - Trou	
				Ø	n°
100	158	180	220	18	8

\* Curva dima - Curve standard : 3

\*\* Curva dima - Curve standard: 5

KBM 100/2-280-1-19X

Con riserva di variazioni tecniche e costruttive senza preavviso.

With reserve of technical and constructive variations without warning. Avec réserve de variations techniques et constructives sans préavis

**POMPE ROTOMECH srl** - 20063 CERNUSCO SUL NAVIGLIO (MI) - ITALY - Via Ponchielli, 1

Tel. +39.02.9211.0205 - +39.02.9233.0399 Fax 02.9211.0630 Sito Internet: [www.pomperotomech.it](http://www.pomperotomech.it) E-mail: [sales@pomperotomech.it](mailto:sales@pomperotomech.it)