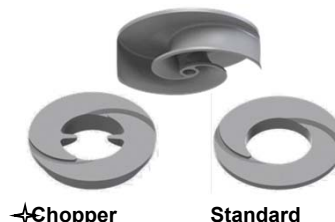


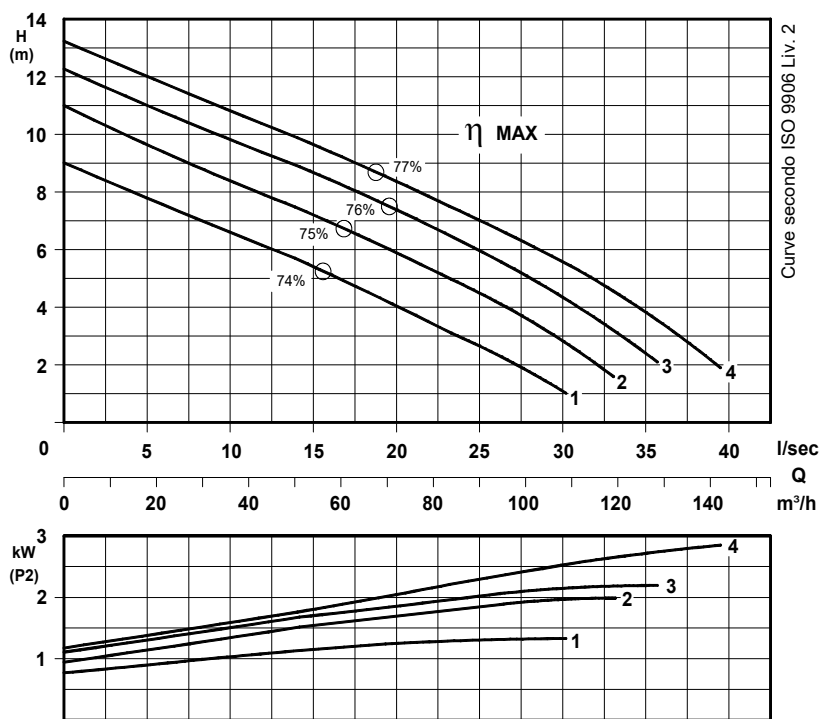
Elettropompe con motore flangiato per liquidi carichi in camera asciutta
Dry installed sewage electric pumps with flanged motor
Electropompes pour eaux chargées en fosse sèche



Girante bicanale aperta e diffusore autopulente
Two channel open impeller and self-cleaning diffuser
Roue à 2 canaux ouvert et anneau autonettoyant



N°	CURVA - Curve - Courbe	POMPA Pump Pompe	DN	GIRI /Min - RPM - Tours/min.	POTENZA MOTORE	PESO
					Motor rating Puissance moteur	Weight Poids
1	KBM 80-165 A1 L1	80	1450		1,5	75
2	KBM 80-180 A2 L2				2,2	83
3	KBM 80-185 A2 L2				3	90
4	KBM 80-190 A2 L2					



P2 - Potenza resa - Shaft power - Puissance sur arbre

✦ Versione chopper con diffusore a taglienti e girante induriti
Chopper version with cutting diffuser and impeller hardened
Version chopper avec anneau tranchant et roue durci

COSTRUZIONE - Materials - Matériaux

Fusioni principali - <i>Principal parts - Parts principal</i>	Ghisa - Cast iron - Fonte - GG 25
Girante - <i>Impeller - Roue</i>	Ghisa - Cast iron - Fonte - GS 500
Diffusore - <i>Diffuser - Anneau</i>	Ghisa - Cast iron - Fonte - GS 500
Albero - <i>Shaft - Arbre</i>	AISI 420
Viteria - <i>Screws - Vis</i>	AISI 304

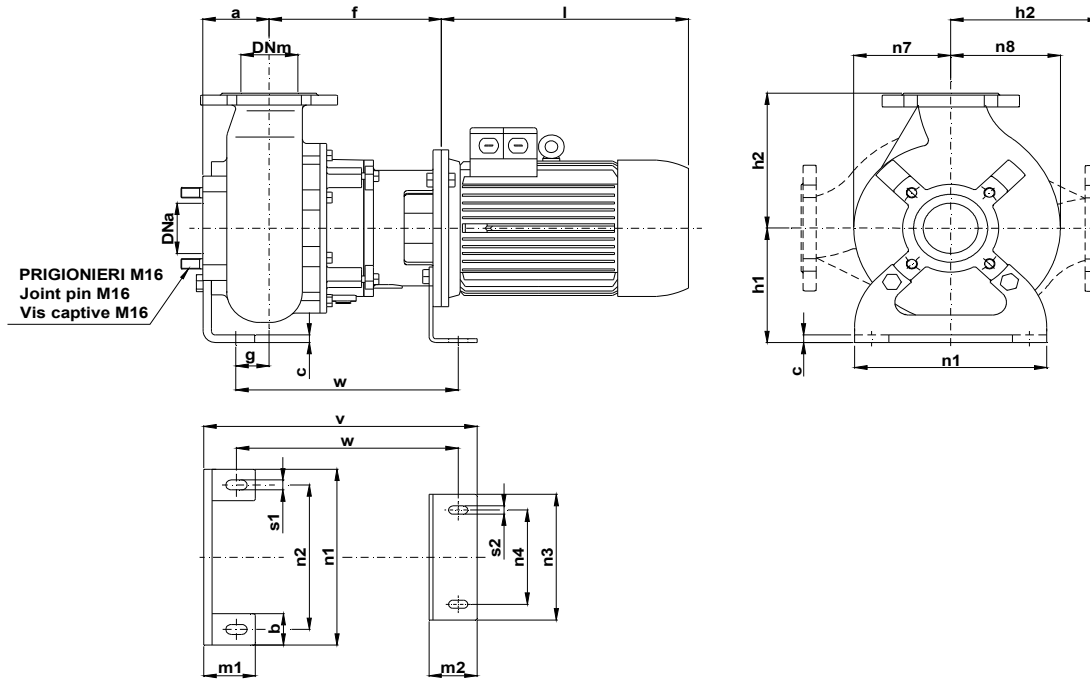
TENUTE MECCANICHE - Mechanical seals - Garniture mécanique

Doppia tenuta meccanica in bagno d'olio - *Double mechanical seals in oil bath - Double garniture mécanique en chambre d'huile*
 Tenuta lato motore / tenuta lato liquido : carburo di silicio
Motor side / liquid side mechanical seal : silicon carbide
 Garniture mécanique côté du moteur / côté liquide : carbure de silicium

CARATTERISTICHE TECNICHE - Technical Features - Caractéristiques Techniques

Motore - <i>Motor - Moteur</i> : B5 IP55	Classe isolamento - <i>Insulating class - Isolement classe</i> : F
Max. temperatura liquido - <i>Max liquid temp. - Max Temperature du liquide</i> : 60°C	
pH Liquido pompato - <i>pH pumped liquid - pH du liquide pompé</i> : 6 - 10	

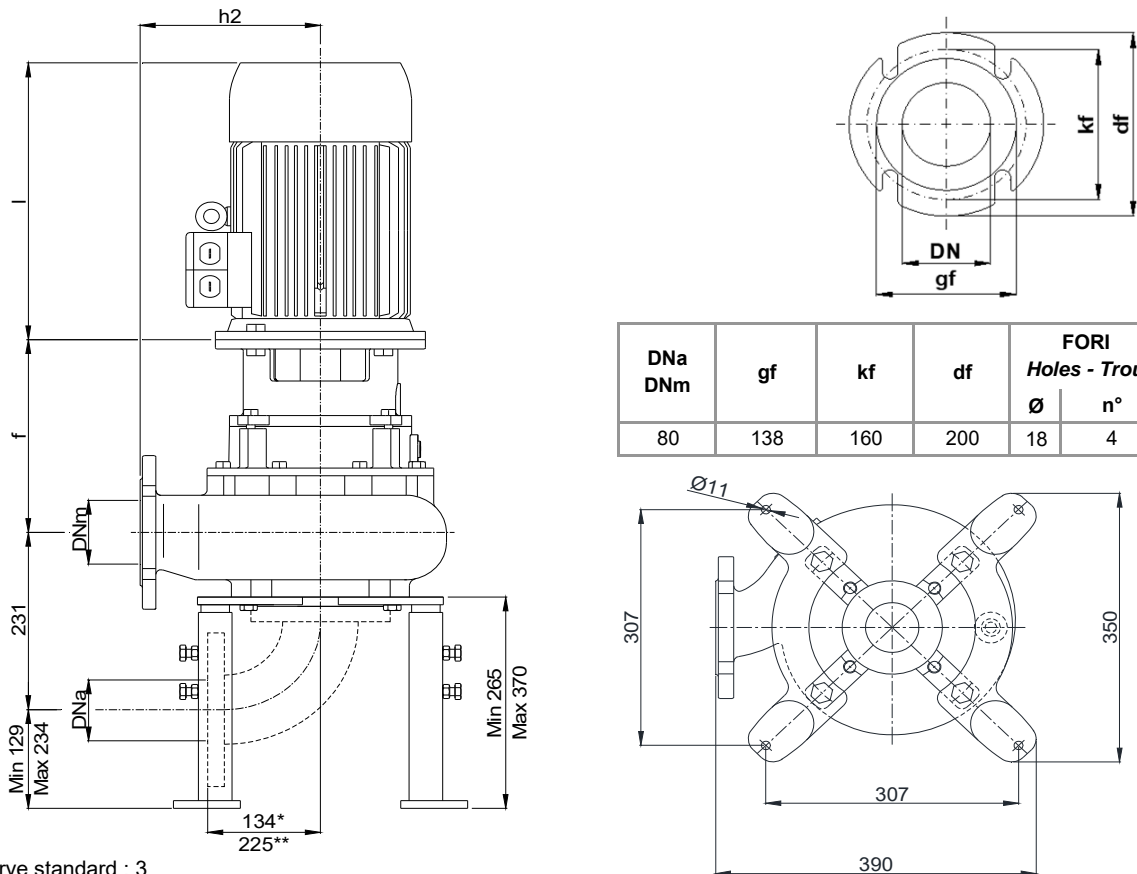
INSTALLAZIONE ORIZZONTALE - *Horizontal installation - Installation Horizontale*



POMPA Pumps Pompe	DNa DNm	Gr. Motore Motor size Taille du moteur	a	b	c	f	g	h1	h2	l	m1	m2	n1	n2	n3	n4	n7	n8	s1	s2	v	w
KBM 80 -	80	90 (kW 1,5)	95	50	12	235	49	180	215	295	75	70	280	230	200	150	140	160	16	13	383	308
		100 (kW 2,2 - 3)				251				325												

Dimensioni - Size - Dimensions in mm.

INSTALLAZIONE VERTICALE - *Vertical installation - Installation verticale*



DNa DNm	gf	kf	df	FORI Holes - Trou	
				Ø	n°
80	138	160	200	18	4

* Curva dima - Curve standard : 3

** Curva dima - Curve standard: 5

KBM 80/4-220-1-19X.0

Con riserva di variazioni tecniche e costruttive senza preavviso.

With reserve of technical and constructive variations without warning. Avec réserve de variations techniques et constructives sans préavis

POMPE ROTOMECC srl - 20063 CERNUSCO SUL NAVIGLIO (MI) - ITALY - Via Ponchielli, 1

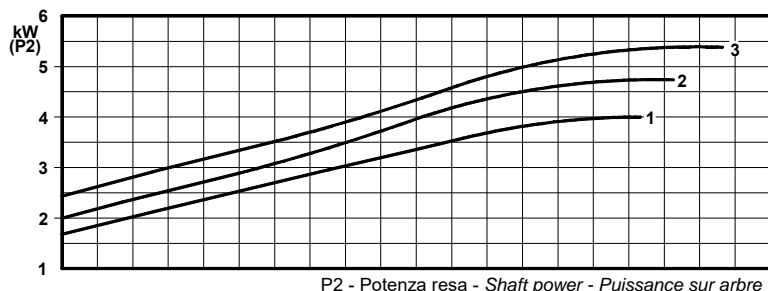
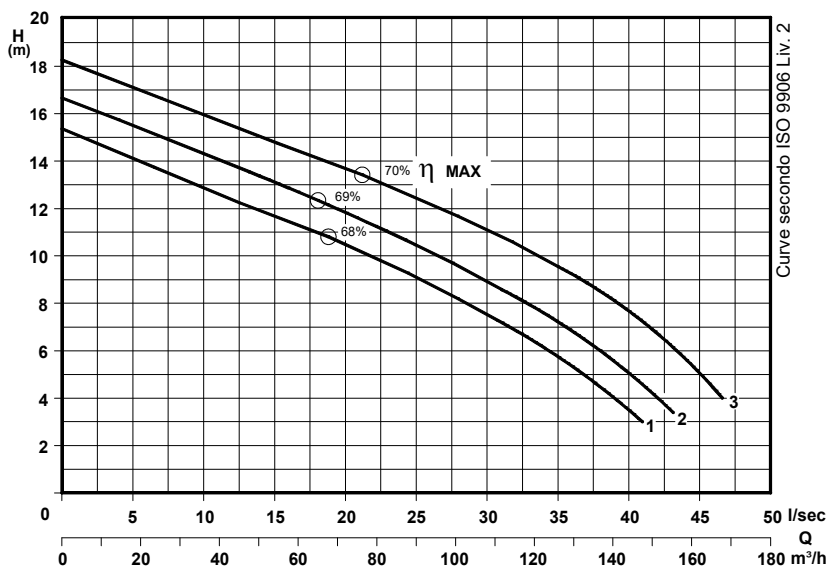
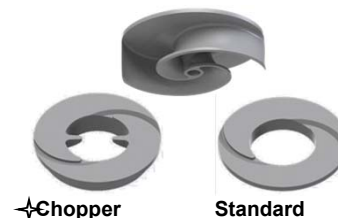
Tel. +39.02.9211.0205 - +39.02.9233.0399 Fax 02 9211.0630 Sito Internet: www.pomperotomec.it E-mail: sales@pomperotomec.it

Elettropompe con motore flangiato per liquidi carichi in camera asciutta
Dry installed sewage electric pumps with flanged motor
Electropompes pour eaux chargées en fosse sèche



CURVA - Curve - Courbe		POMPA Pump Pompe		DN	GIRI / Min - RPM - Tours/min.	POTENZA MOTORE Motor rating Puissance moteur	PESO Weight Poids
N°						kW	Kg
1	KBM 80-205 A2 L2	80	1450			4	110
2	KBM 80-210 A5 L3					5,5	140
3	KBM 80-219 A5 L3						

Girante bicanale aperta e diffusore autopulente
Two channel open impeller and self-cleaning diffuser
Roue à 2 canaux ouvert et anneau autonettoyant



✦ Versione chopper con diffusore a taglienti e girante induriti
Chopper version with cutting diffuser and impeller hardened
Version chopper avec anneau tranchant et roue durci

COSTRUZIONE - Materials - Matériaux

Fusioni principali - <i>Principal parts - Parts principal</i>	Ghisa - Cast iron - Fonte - GG 25
Girante - <i>Impeller - Roue</i>	Ghisa - Cast iron - Fonte - GS 500
Diffusore - <i>Diffuser - Anneau</i>	Ghisa - Cast iron - Fonte - GS 500
Albero - <i>Shaft - Arbre</i>	AISI 420
Viteria - <i>Screws - Vis</i>	AISI 304

TENUTE MECCANICHE - Mechanical seals - Garniture mécanique

Doppia tenuta meccanica in bagno d'olio - *Double mechanical seals in oil bath - Double garniture mécanique en chambre d'huile*

Tenuta lato motore / tenuta lato liquido : carburo di silicio

Motor side / liquid side mechanical seal : silicon carbide

Garniture mécanique côté du moteur / côté liquide : carbure de silicium

CARATTERISTICHE TECNICHE - Technical Features - Caractéristiques Techniques

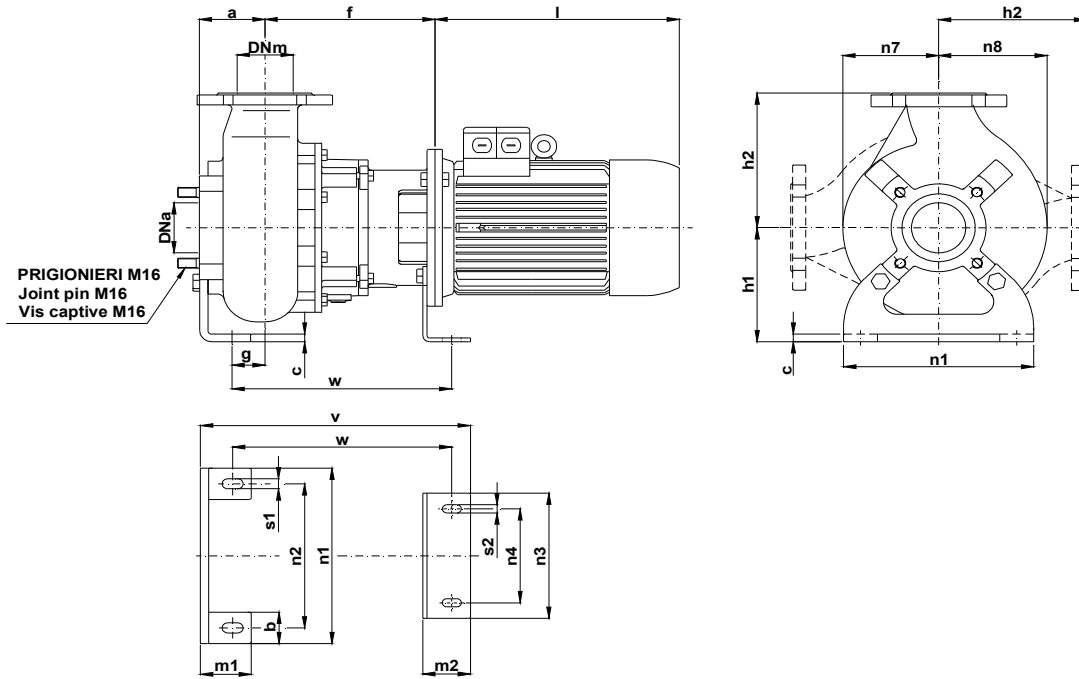
Motore - *Motor - Moteur* : B5 IP55

Classe isolamento - *Insulating class - Isolement classe* : F

Max. temperatura liquido - *Max liquid temp. - Max Temperature du liquide*: 60°C

pH Liquido pompato - *pH pumped liquid - pH du liquide pompé*: 6 - 10

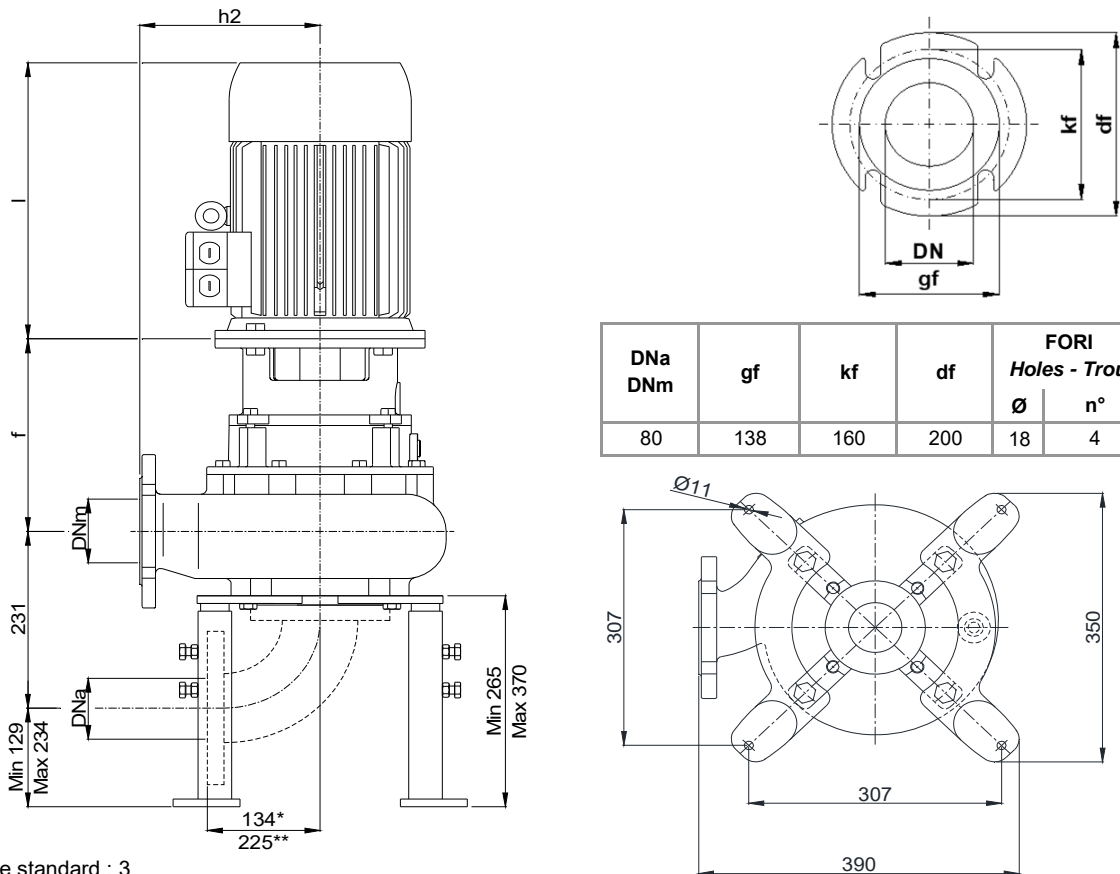
INSTALLAZIONE ORIZZONTALE - *Horizontal installation - Installation Horizontale*



POMPA Pumps Pompe	DNa DNm	Gr. Motore Motor size Taille du moteur	a	b	c	f	g	h1	h2	l	m1	m2	n1	n2	n3	n4	n7	n8	s1	s2	v	w
KBM 80 -..	80	112 (kw 4)	95	50	12	251	49	180	215	345	75	70	280	230	200	150	140	160	16	13	399	324
		435																				

Dimensioni - Size - Dimensions in mm.

INSTALLAZIONE VERTICALE - *Vertical installation - Installation verticale*



DNa DNm	gf	kf	df	FORI Holes - Trou	
				Ø	n°
80	138	160	200	18	4

* Curva dima - Curve standard : 3

** Curva dima - Curve standard: 5

KBM 80/4-220-2-19X.0

Con riserva di variazioni tecniche e costruttive senza preavviso.

With reserve of technical and constructive variations without warning. Avec réserve de variations techniques et constructives sans préavis

POMPE ROTOMECC srl - 20063 CERNUSCO SUL NAVIGLIO (MI) - ITALY - Via Ponchielli, 1

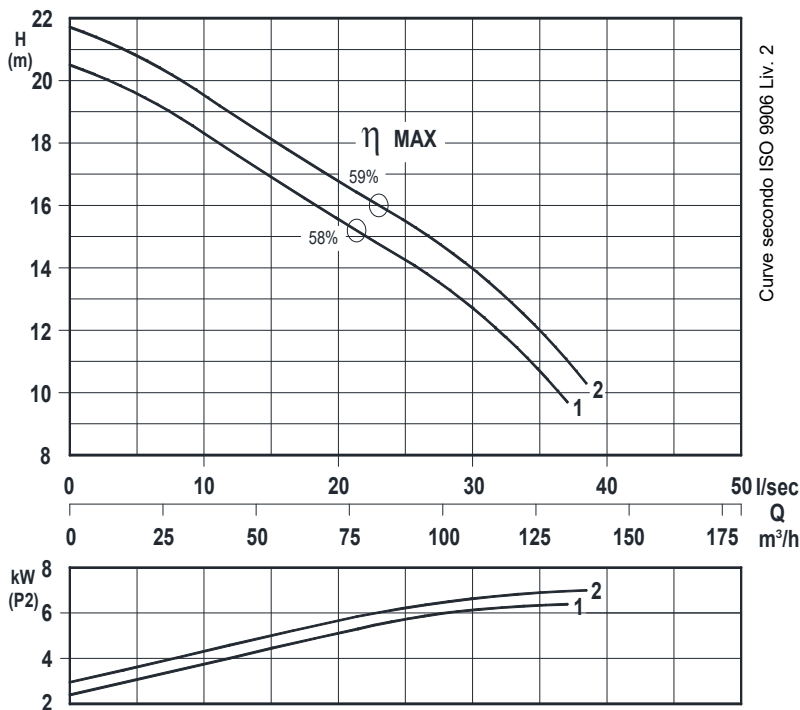
Tel. +39.02.9211.0205 - +39.02.9233.0399 Fax 02.9211.0630 Sito Internet: www.pomperotomec.it E-mail: sales@pomperotomec.it

Elettropompe con motore flangiato per liquidi carichi in camera asciutta
Dry installed sewage electric pumps with flanged motor
Electropompes pour eaux chargées en fosse sèche



N°	CURVA - Curve - Courbe	POMPA Pump Pompe	DN	GIRI /Min - RPM - Tours/min.	POTENZA MOTORE Motor rating Puissance moteur	PESO Weight Poids
1	KBM 80-235 A4 L3		80	1450	7,5	180
2	KBM 80-240 A4 L3					

Girante bicanale aperta e diffusore autopulente
Two channel open impeller and self-cleaning diffuser
Roue à 2 canaux ouvert et anneau autonettoyant



✦ Versione chopper con diffusore a taglienti e girante induriti
 Chopper version with cutting diffuser and impeller hardened
 Version chopper avec anneau tranchant et roue durci

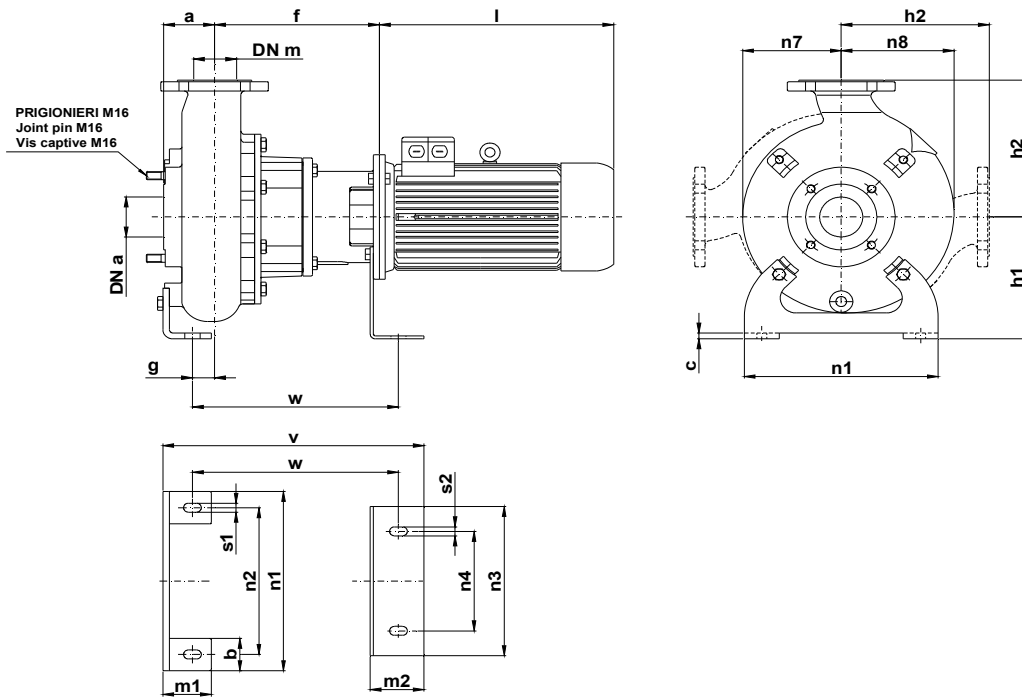
P₂ - Potenza resa - Shaft power - Puissance sur arbre

COSTRUZIONE - Materials - Matériaux	
Fusioni principali - Principal parts - Parts principal	Ghisa - Cast iron - Fonte - GG 25
Girante - Impeller - Roue	Ghisa - Cast iron - Fonte - GS 500
Diffusore - Diffuser - Anneau	Ghisa - Cast iron - Fonte - GS 500
Albero - Shaft - Arbre	AISI 420
Viteria - Screws - Vis	AISI 304

TENUTE MECCANICHE - Mechanical seals - Garniture mécanique
Doppia tenuta meccanica in bagno d'olio - Double mechanical seals in oil bath - Double garniture mécanique en chambre d'huile
Tenuta lato motore / tenuta lato liquido : carburo di silicio
Motor side / liquid side mechanical seal : silicon carbide
Garniture mécanique côté du moteur / côté liquide : carbure de silicium

CARATTERISTICHE TECNICHE - Technical Features - Caractéristiques Techniques	
Motore - Motor - Moteur : B5 IP55	Classe isolamento - Insulating class - Isolement classe : F
Max. temperatura liquido - Max liquid temp. - Max Temperature du liquide: 60°C	
pH Liquido pompato - pH pumped liquid - pH du liquide pompé: 6 - 10	

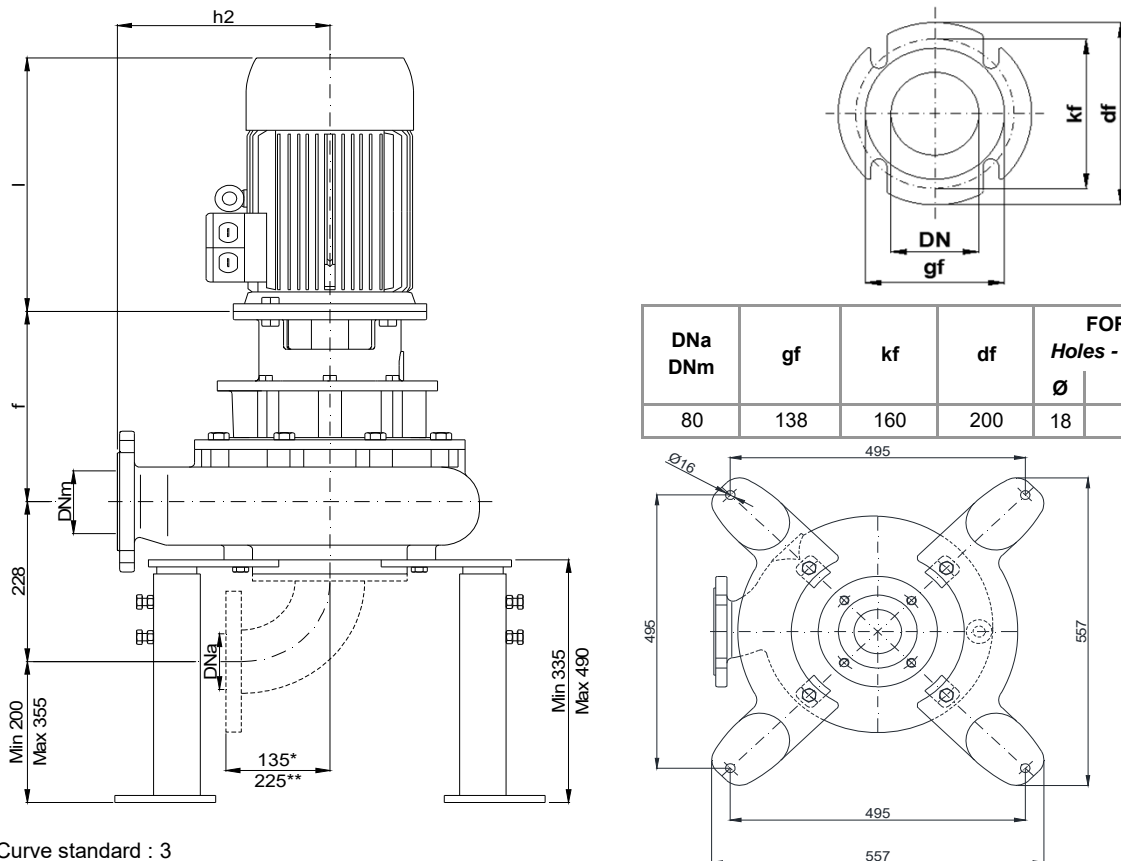
INSTALLAZIONE ORIZZONTALE - *Horizontal installation - Installation Horizontale*



POMPA Pumps Pompe	DNa DNm	Gr. Motore Motor size Taille du moteur	a	b	c	f	g	h1	h2	l	m1	m2	n1	n2	n3	n4	n7	n8	s1	s2	v	w
KBM 80 - ..	80	132	95	70	12	305	29	245	275	435	100	100	400	330	300	200	185	210	18	18	483	371

Dimensioni - Size - Dimensions in mm.

INSTALLAZIONE VERTICALE - *Vertical installation - Installation verticale*



DNa DNm	gf	kf	df	FORI Holes - Trou	
				Ø	n°
80	138	160	200	18	4

* Curva dima - Curve standard : 3

** Curva dima - Curve standard: 5

KBM 80/4-280-1-19X.0

Con riserva di variazioni tecniche e costruttive senza preavviso.

With reserve of technical and constructive variations without warning. Avec réserve de variations techniques et constructives sans préavis

POMPE ROTOMECC srl - 20063 CERNUSCO SUL NAVIGLIO (MI) - ITALY - Via Ponchielli, 1

Tel. +39.02.9211.0205 - +39.02.9233.0399 Fax 02.9211.0630 Sito Internet: www.pomperotomec.it E-mail: sales@pomperotomec.it

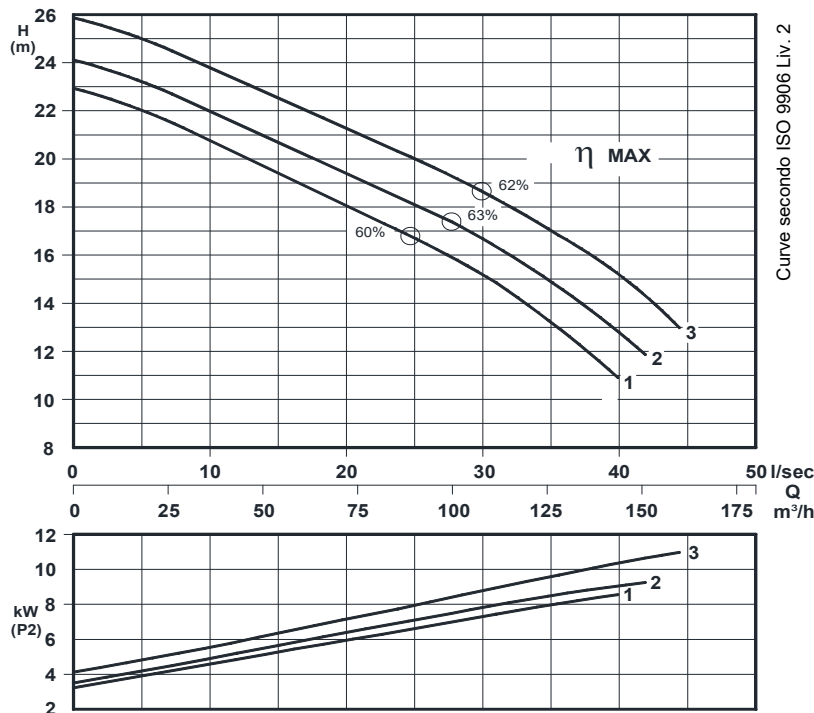
Elettropompe con motore flangiato per liquidi carichi in camera asciutta
Dry installed sewage electric pumps with flanged motor
Electropompes pour eaux chargées en fosse sèche



Girante bicanale aperta e diffusore autopulente
Two channel open impeller and self-cleaning diffuser
Roue à 2 canaux ouvert et anneau autonettoyant



N°	CURVA - Curve - Courbe	POMPA Pump Pompe	DN	GIRI /Min - RPM - Tours/min.	POTENZA MOTORE Motor rating Puissance moteur	PESO Weight Poids
1	KBM 80-245 A6 L4		80	1450	11	190
2	KBM 80-250 A6 L4					
3	KBM 80-260 A6 L4					



P₂ - Potenza resa - Shaft power - Puissance sur arbre

✦ Versione chopper con diffusore a taglienti e girante induriti
 Chopper version with cutting diffuser and impeller hardened
 Version chopper avec anneau tranchant et roue durci

COSTRUZIONE - Materials - Matériaux

Fusioni principali - Principal parts - Parts principal	Ghisa - Cast iron - Fonte - GG 25
Girante - Impeller - Roue	Ghisa - Cast iron - Fonte - GS 500
Diffusore - Diffuser - Anneau	Ghisa - Cast iron - Fonte - GS 500
Albero - Shaft - Arbre	AISI 420
Viteria - Screws - Vis	AISI 304

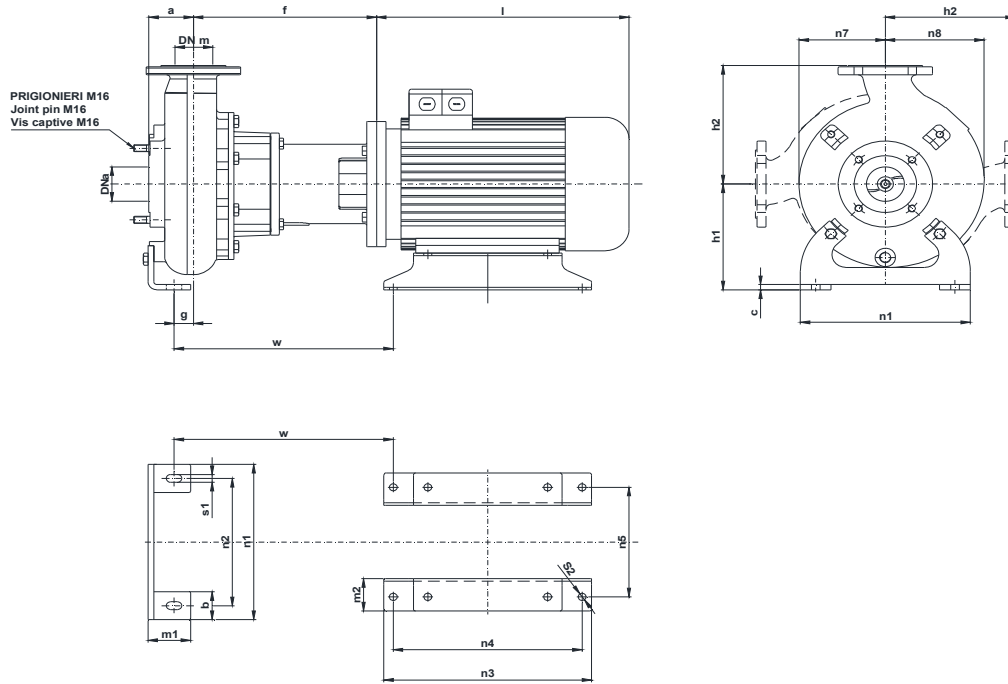
TENUTE MECCANICHE - Mechanical seals - Garniture mécanique

Doppia tenuta meccanica in bagno d'olio - Double mechanical seals in oil bath - Double garniture mécanique en chambre d'huile
 Tenuta lato motore / tenuta lato liquido : carburo di silicio
 Motor side / liquid side mechanical seal : silicon carbide
 Garniture mécanique côté du moteur / côté liquide : carbure de silicium

CARATTERISTICHE TECNICHE - Technical Features - Caractéristiques Techniques

Motore - Motor - Moteur : B5 IP55 Classe isolamento - Insulating class - Isolement classe : F
 Max. temperatura liquido - Max liquid temp. - Max Temperature du liquide: 60°C
 pH Liquido pompato - pH pumped liquid - pH du liquide pompé: 6 - 10

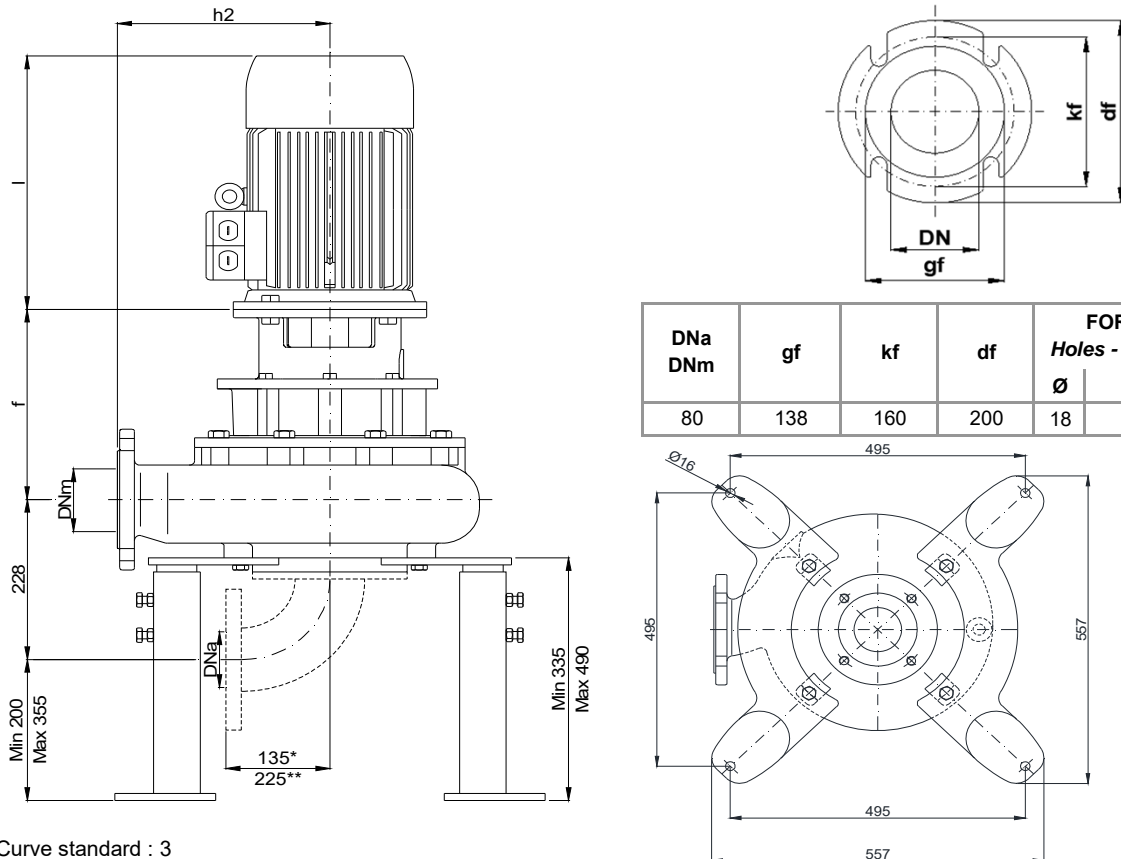
INSTALLAZIONE ORIZZONTALE - *Horizontal installation - Installation Horizontale*



POMPA Pumps Pompe	DNa DNm	Gr. Motore Motor size Taille du moteur	a	b	c	f	g	h1	h2	l	m1	m2	n1	n2	n3	n4	n5	n7	n8	s1	s2	w
KBM 80 - ..	80	160 M	95	70	12	388	29	245	275	545	100	100	400	330	440	210	254	185	210	18	16,5	452

Dimensioni - Size - Dimensions in mm.

INSTALLAZIONE VERTICALE - *Vertical installation - Installation verticale*



DNa DNm	gf	kf	df	FORI Holes - Trou	
				Ø	n°
80	138	160	200	18	4

* Curva dima - Curve standard : 3

** Curva dima - Curve standard: 5

KBM 80/4-280-2-19X.0

Con riserva di variazioni tecniche e costruttive senza preavviso.

With reserve of technical and constructive variations without warning. Avec réserve de variations techniques et constructives sans préavis

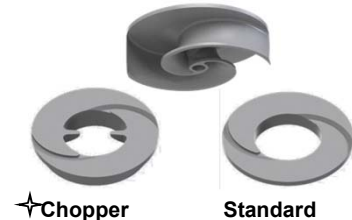
POMPE ROTOMECH srl - 20063 CERNUSCO SUL NAVIGLIO (MI) - ITALY - Via Ponchielli, 1

Tel. +39.02.9211.0205 - +39.02.9233.0399 Fax 02 9211.0630 Sito Internet: www.pomperotomec.it E-mail: sales@pomperotomec.it

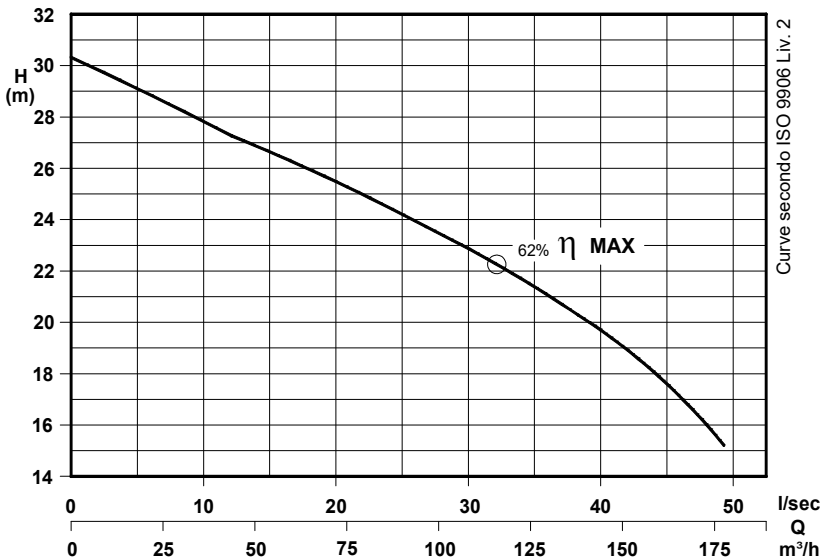
Elettropompe con motore flangiato per liquidi carichi in camera asciutta
Dry installed sewage electric pumps with flanged motor
Electropompes pour eaux chargées en fosse sèche



Girante bicanale aperta e diffusore autopulente
Two channel open impeller and self-cleaning diffuser
Roue à 2 canaux ouvert et anneau autonettoyant



CURVA - Curve - Courbe		DN		POTENZA MOTORE Motor rating Puissance moteur		PESO Weight Poids	
POMPA Pump Pompe		GIRI /Min - RPM - Tours/min.		kW		Kg	
N°							
1	KBM 80-279 A6 L4	80	1450	15	270		



P₂ - Potenza resa - Shaft power - Puissance sur arbre

★ Versione chopper con diffusore a taglienti e girante induriti
 Chopper version with cutting diffuser and impeller hardened
 Version chopper avec anneau tranchant et roue durci

COSTRUZIONE - Materials - Matériaux

Fusioni principali - Principal parts - Parts principal	Ghisa - Cast iron - Fonte - GG 25
Girante - Impeller - Roue	Ghisa - Cast iron - Fonte - GS 500
Diffusore - Diffuser - Anneau	Ghisa - Cast iron - Fonte - GS 500
Albero - Shaft - Arbre	AISI 420
Viteria - Screws - Vis	AISI 304

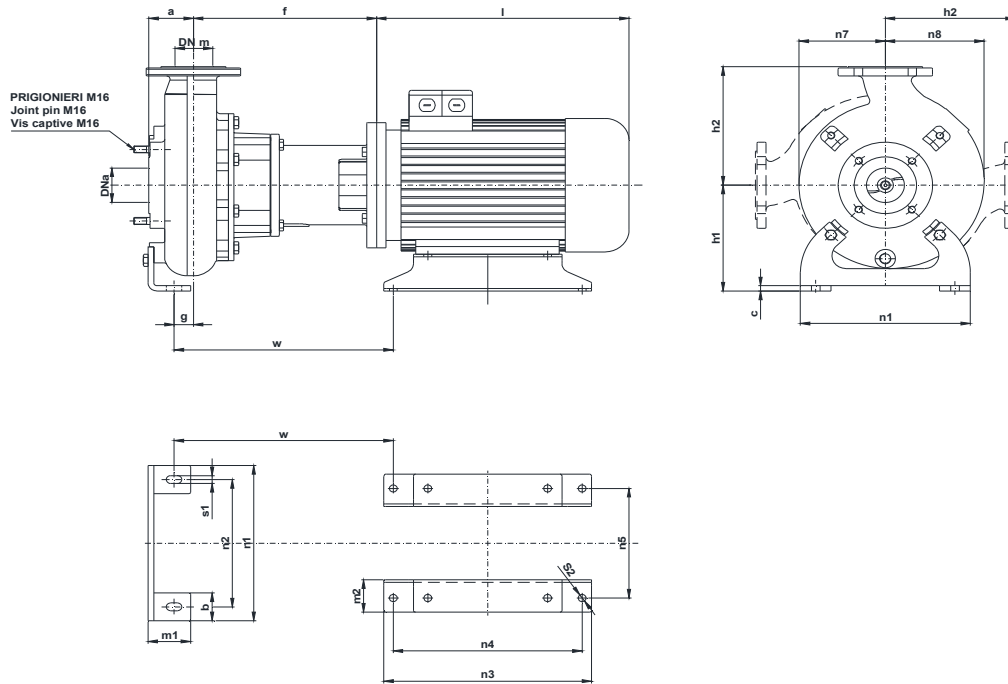
TENUTE MECCANICHE - Mechanical seals - Garniture mécanique

Doppia tenuta meccanica in bagno d'olio - Double mechanical seals in oil bath - Double garniture mécanique en chambre d'huile
 Tenuta lato motore / tenuta lato liquido : carburo di silicio
 Motor side / liquid side mechanical seal : silicon carbide
 Garniture mécanique côté du moteur / côté liquide : carbure de silicium

CARATTERISTICHE TECNICHE - Technical Features - Caractéristiques Techniques

Motore - Motor - Moteur : B5 IP55 Classe isolamento - Insulating class - Isolement classe : F
 Max. temperatura liquido - Max liquid temp. - Max Temperature du liquide: 60°C
 pH Liquido pompato - pH pumped liquid - pH du liquide pompé: 6 - 10

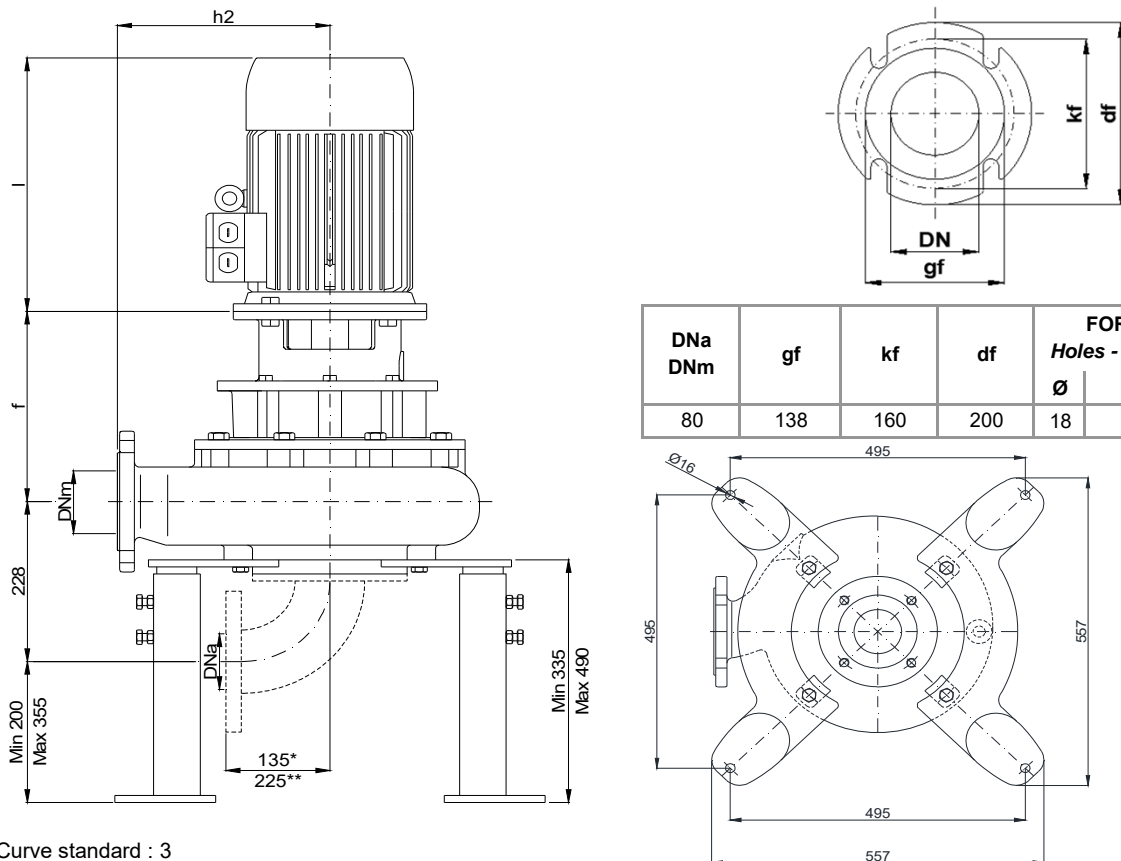
INSTALLAZIONE ORIZZONTALE - *Horizontal installation - Installation Horizontale*



POMPA Pumps Pompe	DNa DNm	Gr. Motore Motor size Taille du moteur	a	b	c	f	g	h1	h2	l	m1	m2	n1	n2	n3	n4	n5	n7	n8	s1	s2	w
KBM 80 - ..	80	160 L	95	70	12	388	29	245	275	570	100	100	400	330	440	254	254	185	210	18	16,5	452

Dimensioni - Size - Dimensions in mm.

INSTALLAZIONE VERTICALE - *Vertical installation - Installation verticale*



DNa DNm	gf	kf	df	FORI Holes - Trou	
				Ø	n°
80	138	160	200	18	4

* Curva dima - Curve standard : 3

** Curva dima - Curve standard: 5

KBM 80/4-280-3-19X.0

Con riserva di variazioni tecniche e costruttive senza preavviso.

With reserve of technical and constructive variations without warning. Avec réserve de variations techniques et constructives sans préavis

POMPE ROTOMECC srl - 20063 CERNUSCO SUL NAVIGLIO (MI) - ITALY - Via Ponchielli, 1

Tel. +39.02.9211.0205 - +39.02.9233.0399 Fax 02.9211.0630 Sito Internet: www.pomperotomec.it E-mail: sales@pomperotomec.it

Elettropompe con motore flangiato per liquidi carichi in camera asciutta
Dry installed sewage electric pumps with flanged motor
Electropompes pour eaux chargées en fosse sèche



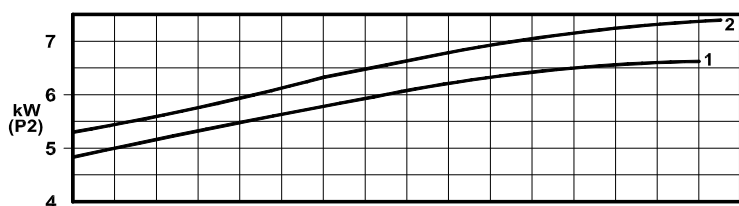
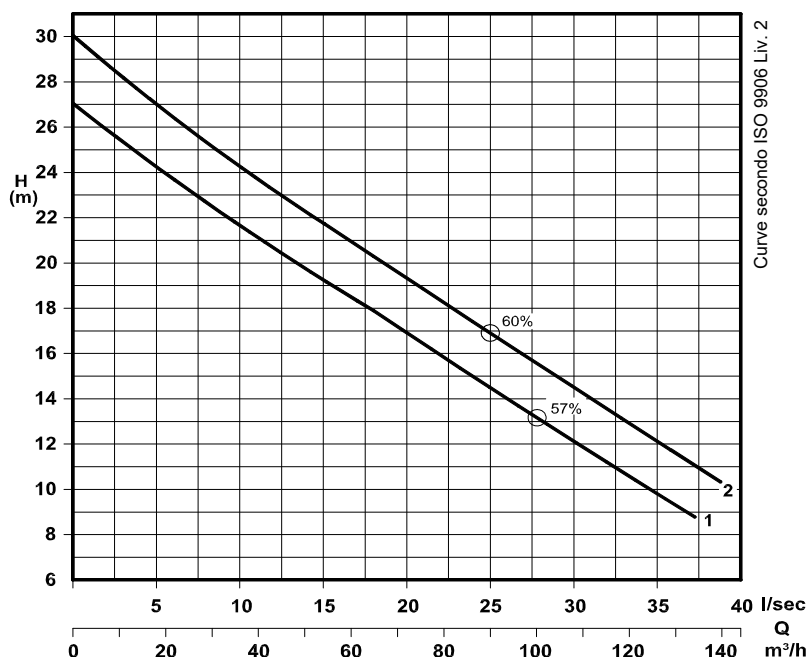
N°	CURVA - Curve - Courbe	POMPA Pump Pompe	DN	GIRI/Min - RPM - Tours/min.	POTENZA MOTORE	PESO
					Motor rating Puissance moteur	Weight Poids
1	KBM 80/2-150 A5 L3	80	2900	7,5	kW	Kg
2	KBM 80/2-158 A5 L3					

Girante bicanale aperta e diffusore autopulente
Two channel open impeller and self-cleaning diffuser
Roue à 2 canaux ouvert et anneau autonettoyant



✦ Chopper

Standard



P2 - Potenza resa - Shaft power - Puissance sur arbre

✦ Versione chopper con diffusore a taglienti e girante induriti
 Chopper version with cutting diffuser and impeller hardened
 Version chopper avec anneau tranchant et roue durci

COSTRUZIONE - Materials - Matériaux

Fusioni principali - Principal parts - Parts principal	Ghisa - Cast iron - Fonte - GG 25
Girante - Impeller - Roue	Ghisa - Cast iron - Fonte - GS 500
Diffusore - Diffuser - Anneau	Ghisa - Cast iron - Fonte - GS 500
Albero - Shaft - Arbre	AISI 420
Viteria - Screws - Vis	AISI 304

TENUTE MECCANICHE - Mechanical seals - Garniture mécanique

Doppia tenuta meccanica in bagno d'olio - Double mechanical seals in oil bath - Double garniture mécanique en chambre d'huile

Tenuta lato motore / tenuta lato liquido : carburo di silicio

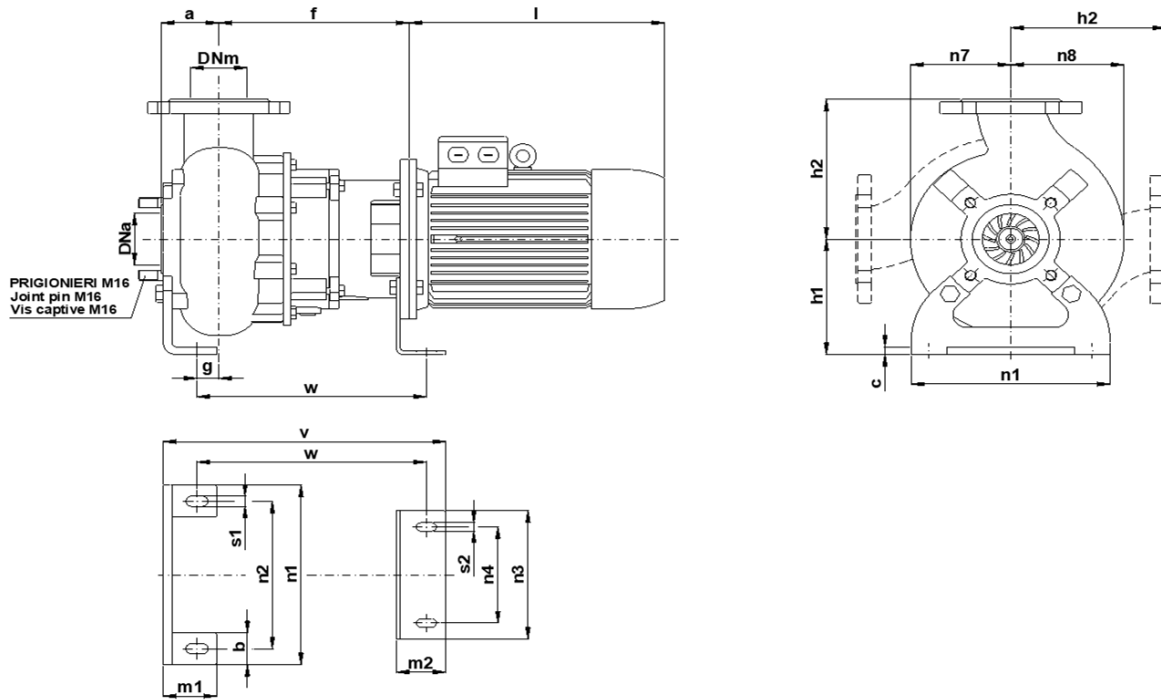
Motor side / liquid side mechanical seal : silicon carbide

Garniture mécanique côté du moteur / côté liquide : carbure de silicium

CARATTERISTICHE TECNICHE - Technical Features - Caractéristiques Techniques

Motore - Motor - Moteur : B5 IP55	Classe isolamento - Insulating class - Isolement classe : F
Max. temperatura liquido - Max. liquid temp. - Max. temperature du liquide : 60°C	
pH Liquido pompato - pH pumped liquid - pH du liquide pompé : 6 - 10	

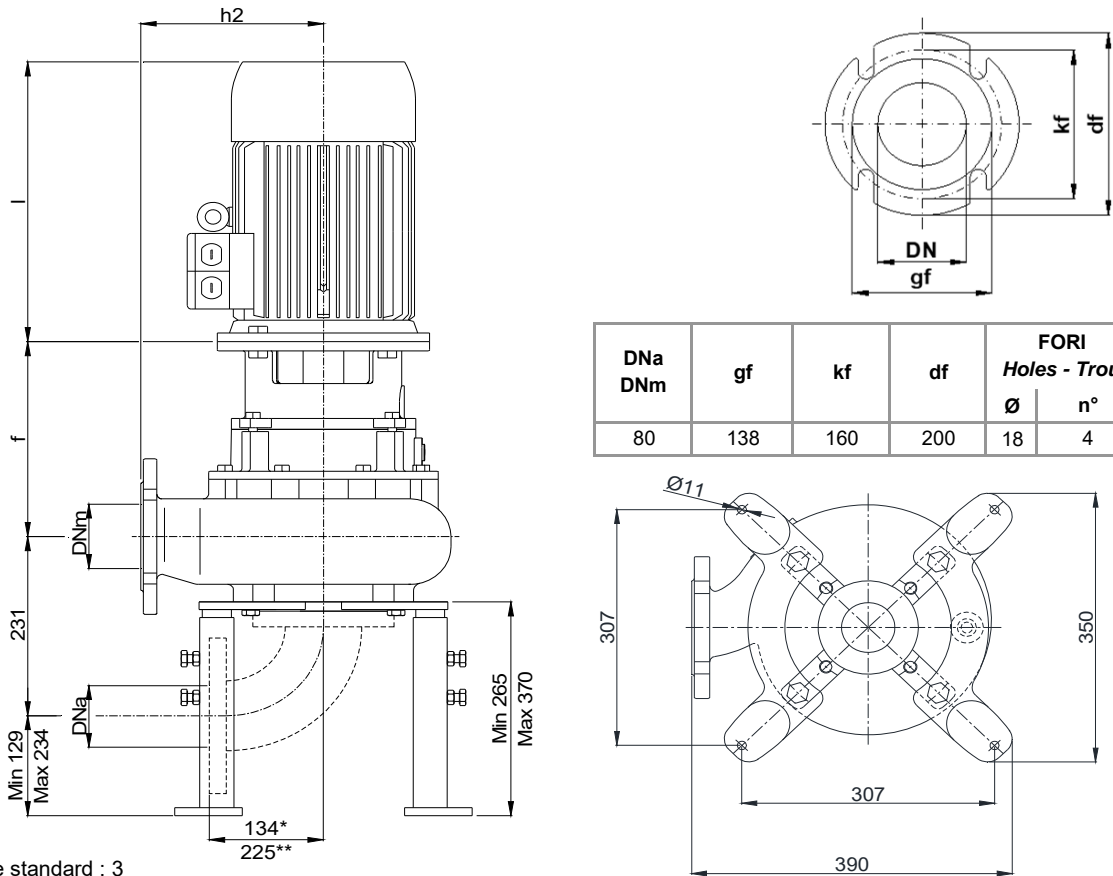
INSTALLAZIONE ORIZZONTALE - *Horizontal installation - Installation Horizontale*



POMPA Pumps Pompe	DNa DNm	Gr. Motore Motor size Taille du moteur	a	b	c	f	g	h1	h2	l	m1	m2	n1	n2	n3	n4	n7	n8	s1	s2	v	w
KBM 80 -	80	132	95	50	12	305	49	180	215	435	75	100	280	230	280	180	140	160	16	18	483	391

Dimensioni - Size - Dimensions in mm.

INSTALLAZIONE VERTICALE - *Vertical installation - Installation verticale*



DNa DNm	gf	kf	df	FORI Holes - Trou	
				Ø	n°
80	138	160	200	18	4

* Curva dima - Curve standard : 3

** Curva dima - Curve standard: 5

KBM 80/2-220-1-19X.0

Con riserva di variazioni tecniche e costruttive senza preavviso.

With reserve of technical and constructive variations without warning. Avec réserve de variations techniques et constructives sans préavis

POMPE ROTOMECC s.r.l. - 20063 CERNUSCO SUL NAVIGLIO (MI) - ITALY - Via Ponchielli, 1

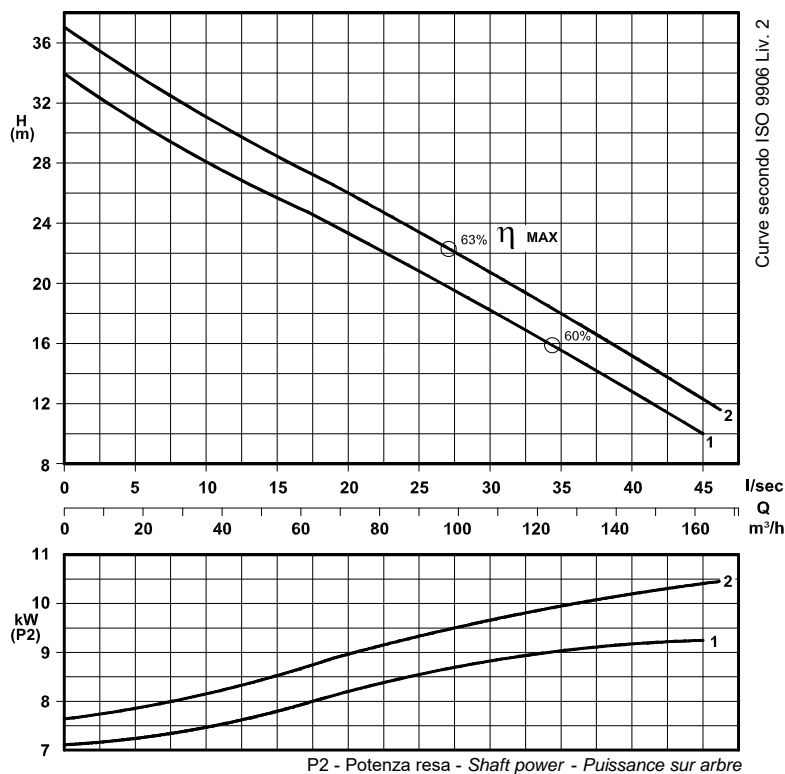
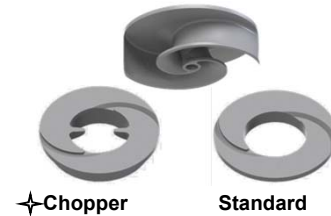
Tel. +39.02.9211.0205 - +39.02.9233.0399 Fax 02 9211.0630 Sito Internet: www.pomperotomec.it E-mail: sales@pomperotomec.it

Elettropompe con motore flangiato per liquidi carichi in camera asciutta
Dry installed sewage electric pumps with flanged motor
Electropompes pour eaux chargées en fosse sèche



N°	CURVA - Curve - Courbe POMPA Pump Pompe	DN	GIRI/Min - RPM - Tours/min.	POTENZA MOTORE	PESO
				Motor rating Puissance moteur	Weight Poids
1	KBM 80/2-164 A5 L3	80	2900	11 kW	173 Kg
2	KBM 80/2-170 A5 L3				

Girante bicanale aperta e diffusore autopulente
Two channel open impeller and self-cleaning diffuser
Roue à 2 canaux ouvert et anneau autonettoyant



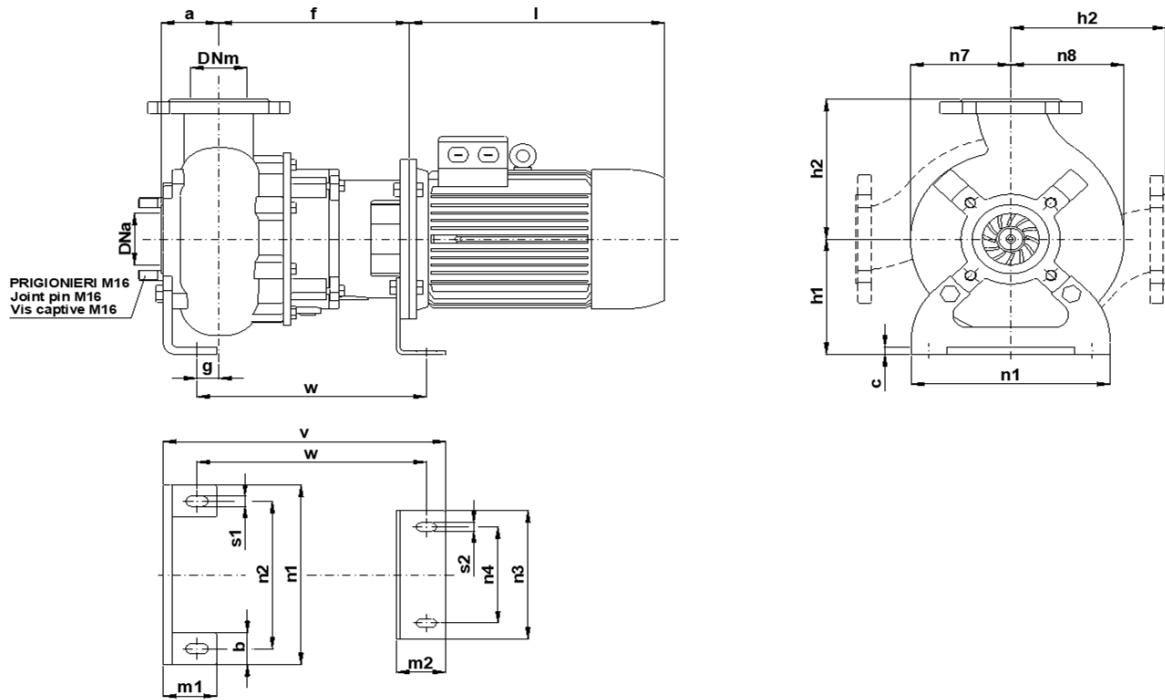
✦ Versione chopper con diffusore a taglienti e girante induriti
 Chopper version with cutting diffuser and impeller hardened
 Version chopper avec anneau tranchant et roue durci

COSTRUZIONE - Materials - Matériaux	
Fusioni principali - Principal parts - Parts principal	Ghisa - Cast iron - Fonte - GG 25
Girante - Impeller - Roue	Ghisa - Cast iron - Fonte - GS 500
Diffusore - Diffuser - Anneau	Ghisa - Cast iron - Fonte - GS 500
Albero - Shaft - Arbre	AISI 420
Viteria - Screws - Vis	AISI 304

TENUTE MECCANICHE - Mechanical seals - Garniture mécanique
Doppia tenuta meccanica in bagno d'olio - Double mechanical seals in oil bath - Double garniture mécanique en chambre d'huile
Tenuta lato motore / tenuta lato liquido : carburo di silicio Motor side / liquid side mechanical seal : silicon carbide Garniture mécanique côté du moteur / côté liquide : carbure de silicium

CARATTERISTICHE TECNICHE - Technical Features - Caractéristiques Techniques	
Motore - Motor - Moteur : B5 IP55	Classe isolamento - Insulating class - Isolement classe : F
Max. temperatura liquido - Max liquid temp. - Max Temperature du liquide: 60°C	
pH Liquido pompato - pH pumped liquid - pH du liquide pompé: 6 - 10	

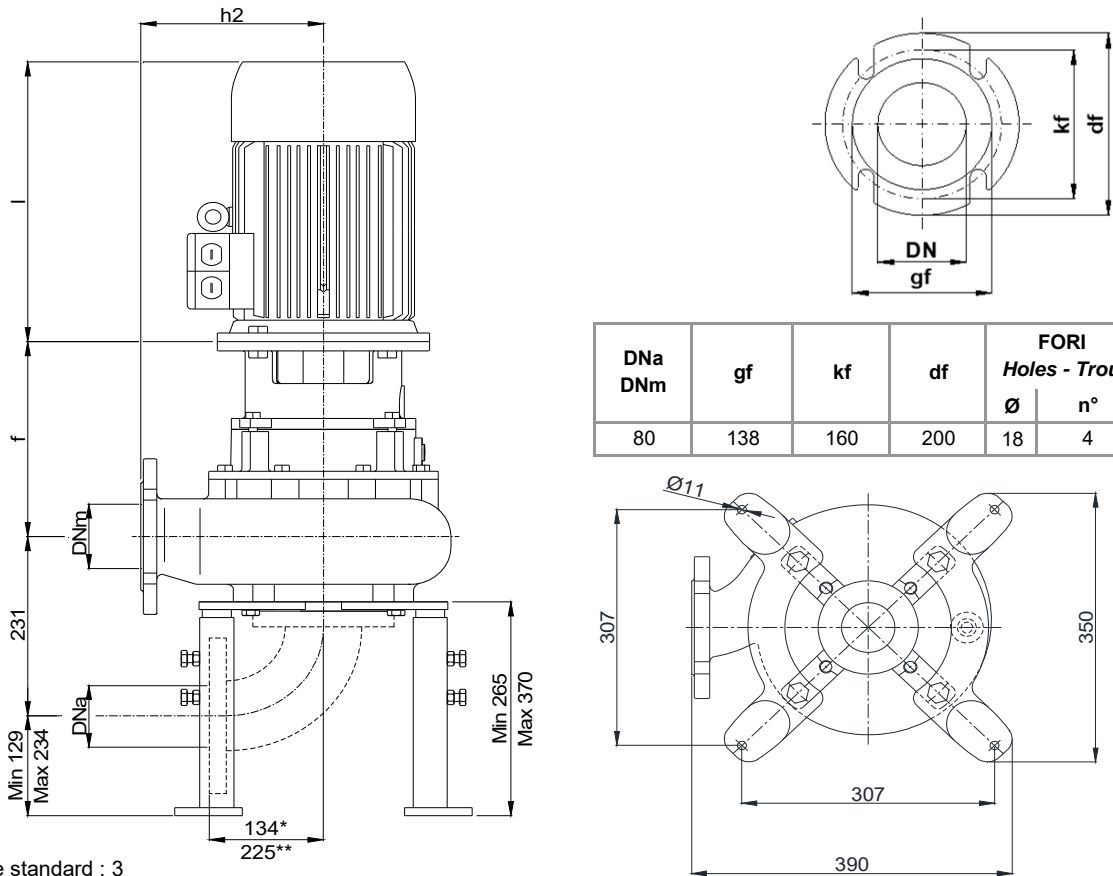
INSTALLAZIONE ORIZZONTALE - *Horizontal installation - Installation Horizontale*



POMPA Pumps Pompe	DNa DNm	Gr. Motore Motor size Taille du moteur	a	b	c	f	g	h1	h2	l	m1	m2	n1	n2	n3	n4	n7	n8	s1	s2	v	w
KBM 80 -	80	132	95	50	12	305	49	180	215	435	75	100	280	230	280	180	140	160	16	18	483	391

Dimensioni - Size - Dimensions in mm.

INSTALLAZIONE VERTICALE - *Vertical installation - Installation verticale*



DNa DNm	gf	kf	df	FORI Holes - Trou	
				Ø	n°
80	138	160	200	18	4

* Curva dima - Curve standard : 3

** Curva dima - Curve standard: 5

KBM 80/2-220-2-19X.0

Con riserva di variazioni tecniche e costruttive senza preavviso.

With reserve of technical and constructive variations without warning. Avec réserve de variations techniques et constructives sans préavis

POMPE ROTOMECC srl - 20063 CERNUSCO SUL NAVIGLIO (MI) - ITALY - Via Ponchielli, 1

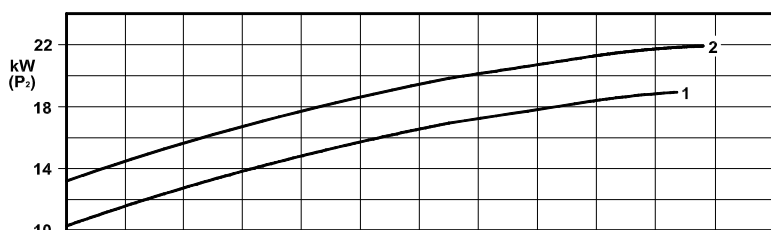
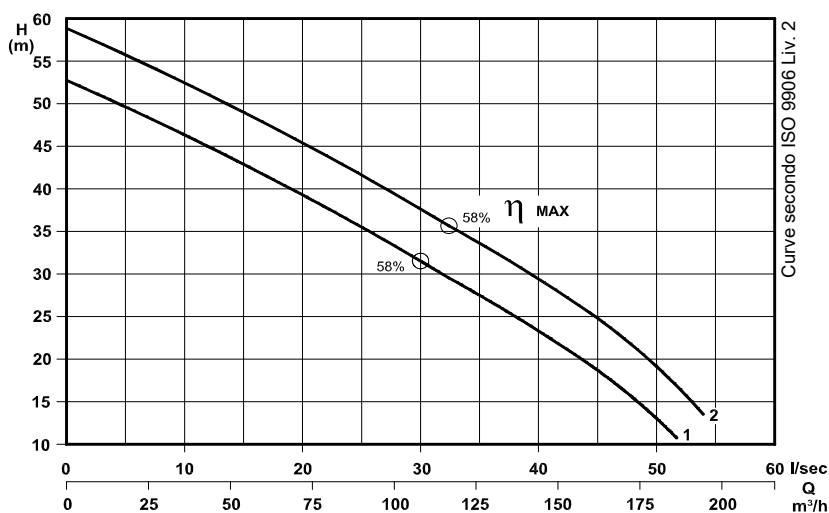
Tel. +39.02.9211.0205 - +39.02.9233.0399 Fax 02 9211.0630 Sito Internet: www.pomperotomec.it E-mail: sales@pomperotomec.it

Elettropompe con motore flangiato per liquidi carichi in camera asciutta
Dry installed sewage electric pumps with flanged motor
Electropompes pour eaux chargées en fosse sèche



CURVA - Curve - Courbe		POMPA Pump Pompe	DN	GIRI /Min - RPM - Tours/min.	POTENZA MOTORE Motor rating Puissance moteur	PESO Weight Poids
N°						
1	KBM 80/2-200 A6 L4	80	2900		18,5	275
2	KBM 80/2-206 A7 L4					

Girante bicanale aperta e diffusore autopulente
Two channel open impeller and self-cleaning diffuser
Roue à 2 canaux ouvert et anneau autonettoyant



P2 - Potenza resa - Shaft power - Puissance sur arbre

✦ Versione chopper con diffusore a taglienti e girante indurite
 Chopper version with cutting diffuser and impeller hardened
 Version chopper avec anneau tranchant et roue durci

COSTRUZIONE - Materials - Matériaux

Fusioni principali - Principal parts - Parts principal	Ghisa - Cast iron - Fonte - GG 25
Girante - Impeller - Roue	Ghisa - Cast iron - Fonte - GS 500
Diffusore - Diffuser - Anneau	Ghisa - Cast iron - Fonte - GS 500
Albero - Shaft - Arbre	AISI 420
Viteria - Screws - Vis	AISI 304

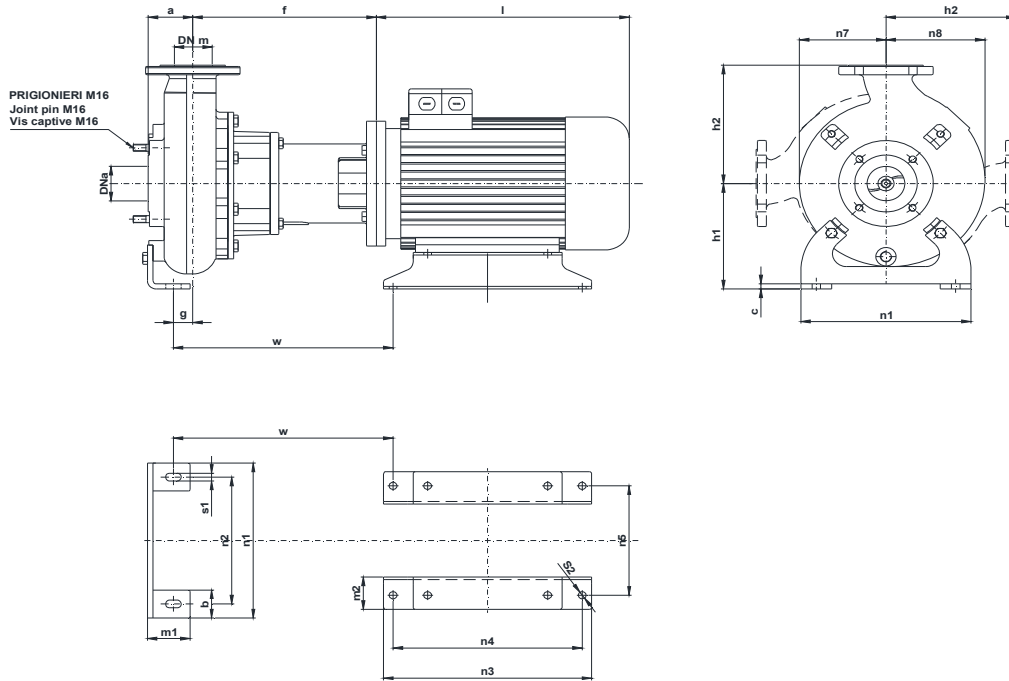
TENUTE MECCANICHE - Mechanical seals - Garniture mécanique

Doppia tenuta meccanica in bagno d'olio - Double mechanical seals in oil bath - Double garniture mécanique en chambre d'huile
 Tenuta lato motore / tenuta lato liquido : carburo di silicio
 Motor side / liquid side mechanical seal : silicon carbide
 Garniture mécanique côté du moteur / côté liquide : carbure de silicium

CARATTERISTICHE TECNICHE - Technical Features - Caractéristiques Techniques

Motore - Motor - Moteur : B5 IP55 Classe isolamento - Insulating class - Isolement classe : F
 Max. temperatura liquido - Max liquid temp. - Max Temperature du liquide: 60°C
 pH Liquido pompato - pH pumped liquid - pH du liquide pompé : 6 - 10

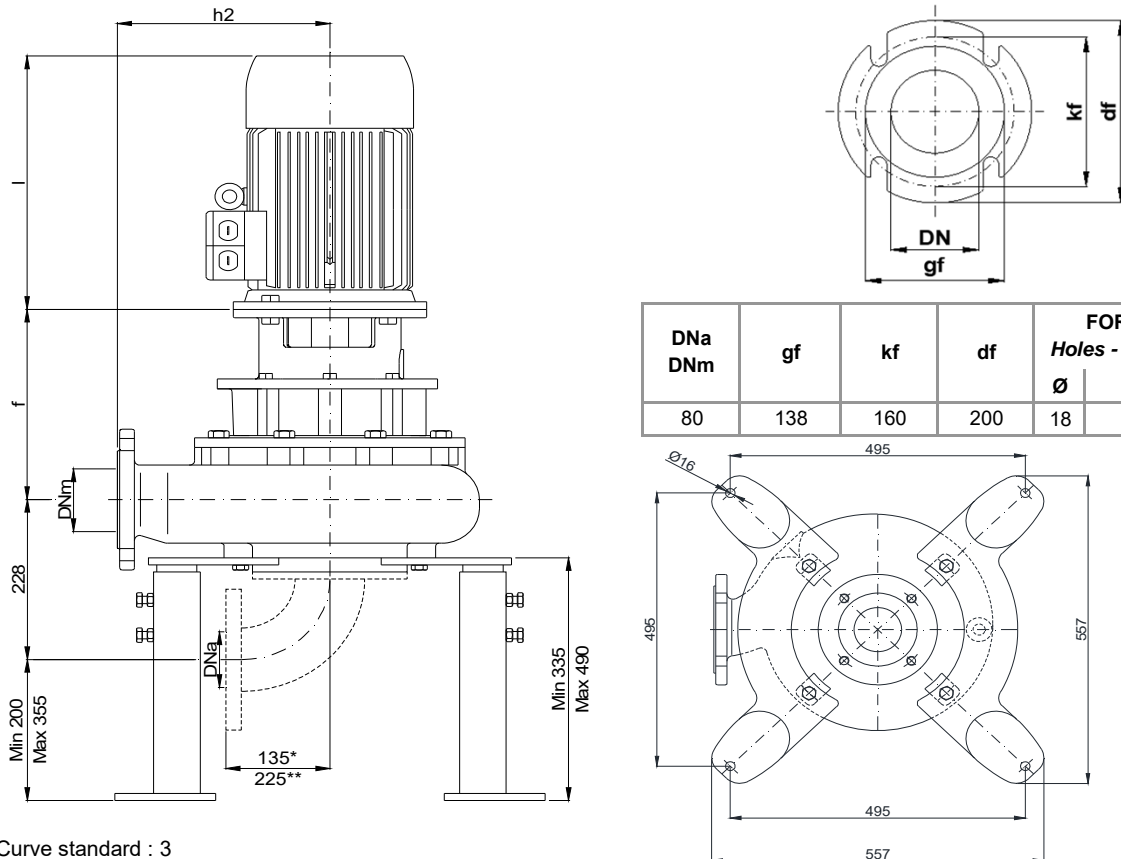
INSTALLAZIONE ORIZZONTALE - *Horizontal installation - Installation Horizontale*



POMPA Pumps Pompe	DNa DNm	Gr. Motore Motor size Taille du moteur	a	b	c	f	g	h1	h2	l	m1	m2	n1	n2	n3	n4	n5	n7	n8	s1	s2	w
KBM ..200..	80	160 L	95	70	12	388	29	245	275	545	100	100	400	330	440	254	254	185	210	18	16,5	452
KBM..206..		180 M														241	279					

Dimensioni - Size - Dimensions in mm.

INSTALLAZIONE VERTICALE - *Vertical installation - Installation verticale*



DNa DNm	gf	kf	df	FORI Holes - Trou	
				Ø	n°
80	138	160	200	18	4

* Curva dima - Curve standard : 3

** Curva dima - Curve standard: 5

KBM 80/4-280-1-19X.0

Con riserva di variazioni tecniche e costruttive senza preavviso.

With reserve of technical and constructive variations without warning. Avec réserve de variations techniques et constructives sans préavis

POMPE ROTOMECC s.r.l. - 20063 CERNUSCO SUL NAVIGLIO (MI) - ITALY - Via Ponchielli, 1

Tel. +39.02.9211.0205 - +39.02.9233.0399 Fax 02.9211.0630 Sito Internet: www.pomperotomec.it E-mail: sales@pomperotomec.it