



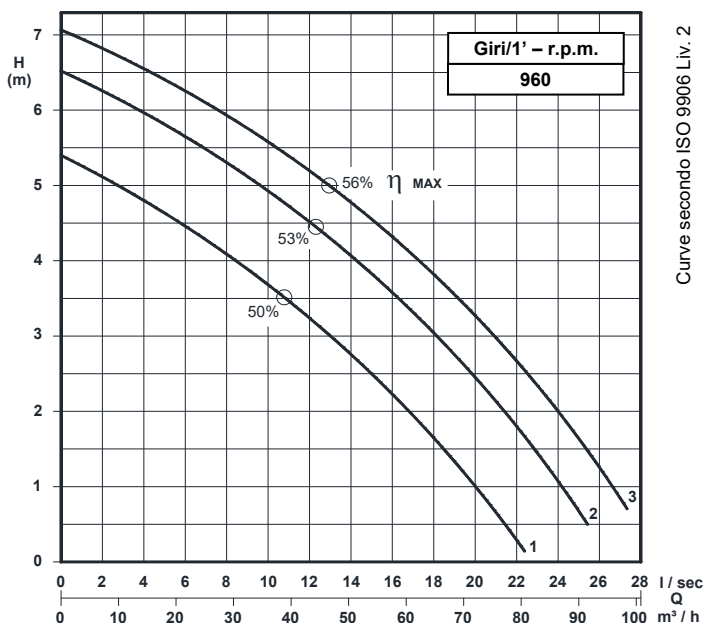
# POMPE ROTOMECC

Elettropompe centrifughe ad asse orizzontale con girante arretrata a vortice  
Centrifugal horizontal pumps with vortex impeller  
Pompes à axe horizontal avec roue vortex

## KS 80/6-220.1

### DN 80

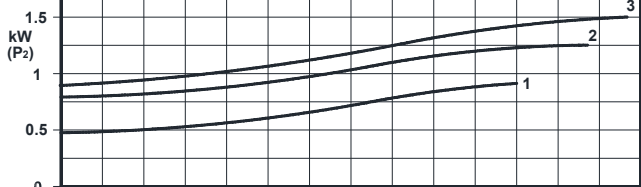
### Giri/1' - r.p.m. 960



### Grandezza - Size - Group 80/220

Curva Curve Courbe N°	Pompa Pump Pompe	DN	Potenza motore Motor power Puissance du moteur P2 (Kw)	Giri/1' r.p.m.	Passaggio libero Free passage Section de passage
1	KS 80/6-210F2 A1 S1	80	1,5	960	70
2	KS 80/6-219F2 A1 S1				
3	KS 80/6-219F3 A2 S1				

P2 - Potenza resa - Shaft power - Puissance sur arbre



### COSTRUZIONE - Materials - Matériaux

Fusioni principali - Principal parts - Parts principal	Ghisa - Cast iron - Fonte - GG 25
Girante - Impeller - Roue	Ghisa - Cast iron - Fonte - GG 25
Albero - Shaft - Arbre	AISI 420
Viteria - Screws - Vis	AISI 304

### TENUTE MECCANICHE - Mechanical seals - Garniture mécanique

Doppia tenuta meccanica in bagno d'olio - Double mechanical seals in oil bath - Double garniture mécanique en chambre d'huile

Tenuta lato motore / tenuta lato liquido : carburo di silicio

Motor side / liquid side mechanical seal : silicon carbide

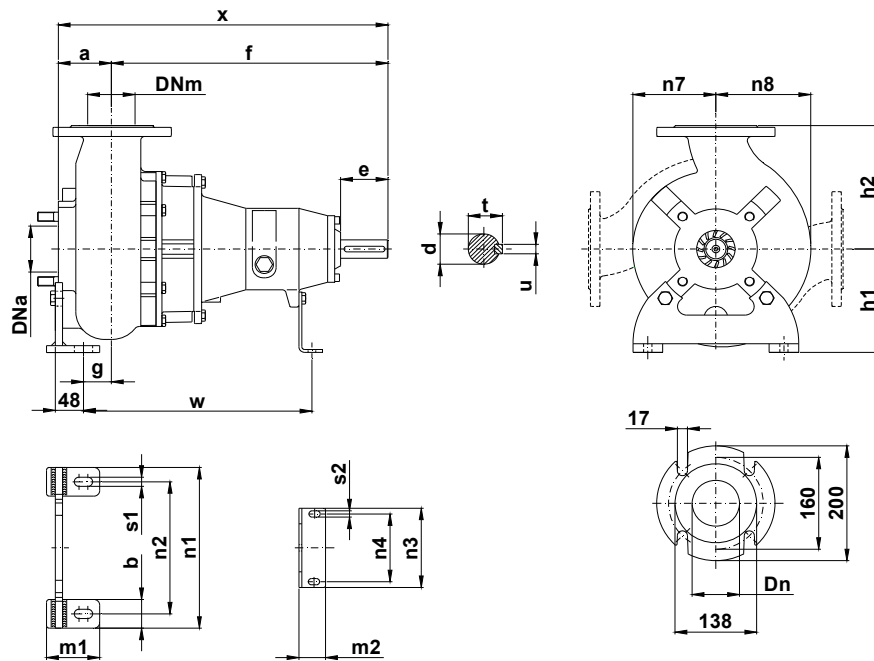
Garniture mécanique côté du moteur / côté liquide : carbure de silicium

### CARATTERISTICHE TECNICHE - Technical Features - Caractéristiques Techniques

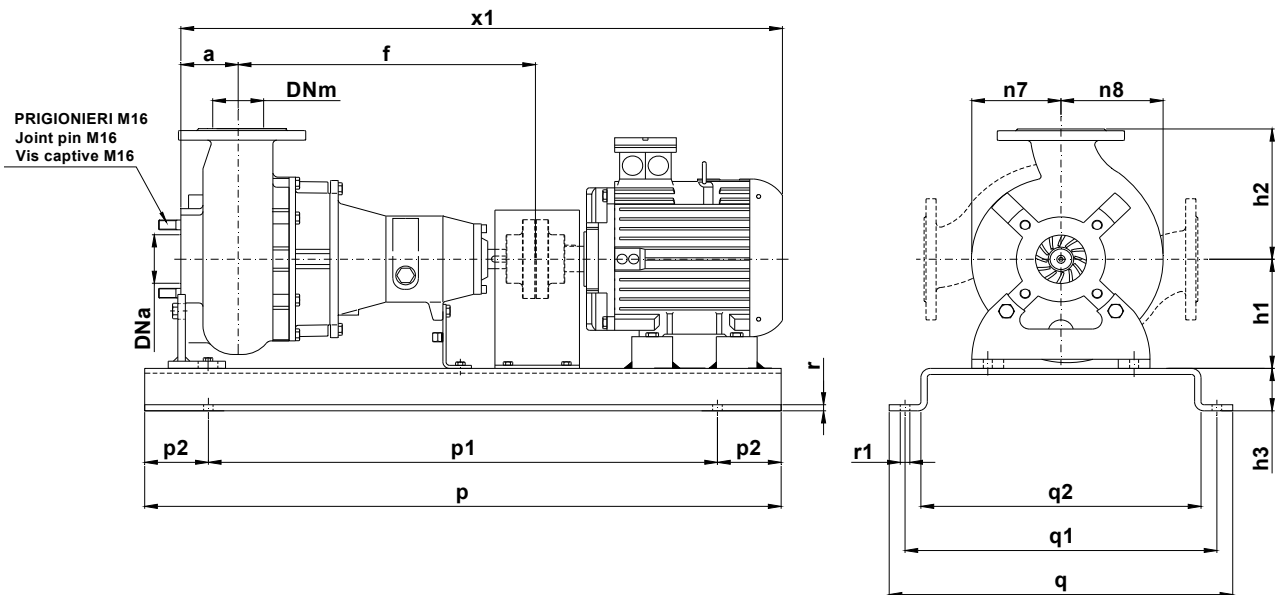
Max. temperatura liquido - Max. liquid temp. - Max. temperature du liquide : 60°C

pH Liquido pompato - pH pumped liquid - pH du liquide pompé : 6 - 10

## DIMENSIONI DI INGOMBRO – Dimensions



Pompa Pump Pompe	DNa DNm	a	b	c	d	e	f	g	h1	h2	m1	m2	n1	n2	n3	n4	n7	n8	s1	s2	t	u	v	w	x	Peso Weight Poids
KS 80 / .. A1S1 KS 80 / .. A2S1	80	90	50	12	32	80	467	49	180	215	75	45	280	230	120	90	140	160	16	11	35	10	456	392	557	68



Pompa Pump Pompe	kW	Giri/1' r.p.m.	Motore Motor - Moteur MEC	h3	p	p1	p2	q	q1	q2	r	r1	x1	Peso Weight Poids
KS 80/6-210F2 A1 S1	1,5	960	100	70	1000	800	100	540	490	440	10	16	945	136
KS 80/6-219F2 A1 S1														
KS 80/6-219F3 A2 S1														

KS 80/6-220.1.19

Con riserva di variazioni tecniche e costruttive senza preavviso.

With reserve of technical and constructive variations without warning. Avec réserve de variations techniques et constructives sans préavis

**POMPE ROTOMECC srl** - 20063 CERNUSCO SUL NAVIGLIO (MI) - ITALY - Via Ponchielli, 1

Tel. +39.02.9211.0205 - +39.02.9233.0399 Fax 02.9211.0630 Sito Internet: [www.pomperotomec.it](http://www.pomperotomec.it) E-mail: [sales@pomperotomec.it](mailto:sales@pomperotomec.it)



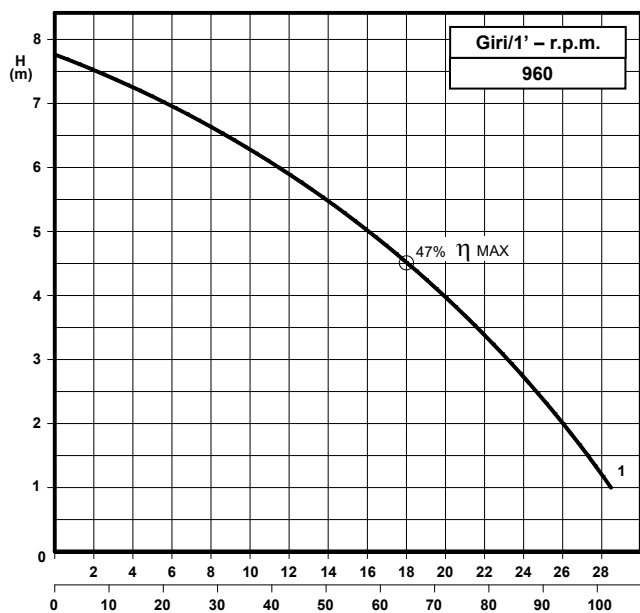
# POMPE ROTOMEK

Elettropompe centrifughe ad asse orizzontale con girante arretrata a vortice  
Centrifugal horizontal pumps with vortex impeller  
Pompes à axe horizontal avec roue vortex

## KS 80/6-220.2

### DN 80

Giri/1' - r.p.m.  
960



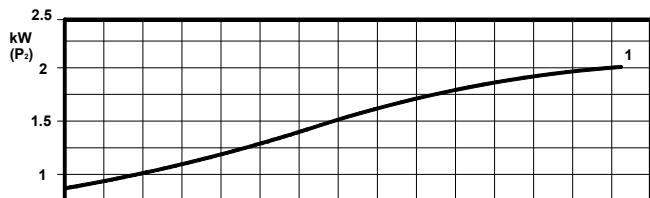
Curva secondo ISO 9906 Liv. 2



### Grandezza - Size - Group 80/220

Curva Curve Courbe N°	Pompa Pump Pompe	DN	Potenza motore Motor power Puissance du moteur P2 (Kw)	Giri/1' r.p.m.	Passaggio libero Free passage Section de passage
1	KS 80/6-219F A2 S1	80	2,2	960	65

P2 - Potenza resa - Shaft power - Puissance sur arbre



### COSTRUZIONE - Materials - Matériaux

Fusioni principali - Principal parts - Parts principal	Ghisa - Cast iron - Fonte - GG 25
Girante - Impeller - Roue	Ghisa - Cast iron - Fonte - GG 25
Albero - Shaft - Arbre	AISI 420
Viteria - Screws - Vis	AISI 304

### TENUTE MECCANICHE - Mechanical seals - Garniture mécanique

Doppia tenuta meccanica in bagno d'olio - Double mechanical seals in oil bath - Double garniture mécanique en chambre d'huile

Tenuta lato motore / tenuta lato liquido : carburo di silicio

Motor side / liquid side mechanical seal : silicon carbide

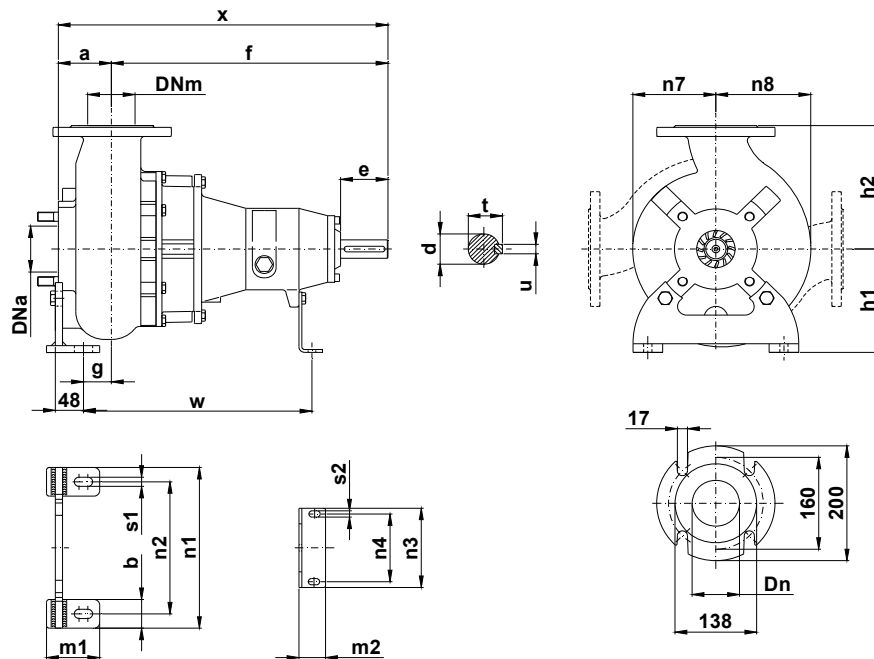
Garniture mécanique côté du moteur / côté liquide : carbure de silicium

### CARATTERISTICHE TECNICHE - Technical Features - Caractéristiques Techniques

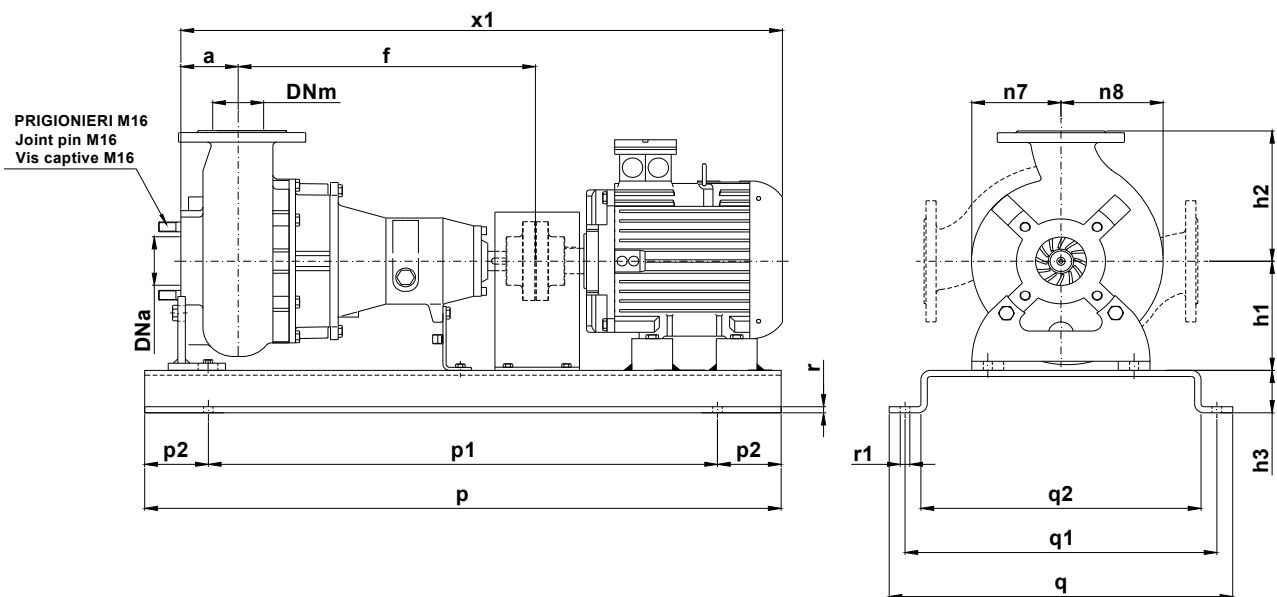
Max. temperatura liquido - Max. liquid temp. - Max. temperature du liquide : 60°C

pH Liquido pompato - pH pumped liquid - pH du liquide pompé : 6 - 10

## DIMENSIONI DI INGOMBRO – Dimensions



Pompa Pump Pompe	DNa DNm	a	b	c	d	e	f	g	h1	h2	m1	m2	n1	n2	n3	n4	n7	n8	s1	s2	t	u	v	w	x	Peso Weight Poids
KS 80/6-219F A2 S1	80	90	50	12	32	80	467	49	180	215	75	45	280	230	120	90	140	160	16	11	35	10	456	392	557	68



Pompa Pump Pompe	kW	Giri/1' r.p.m.	Motore Motor - Moteur MEC	h3	p	p1	p2	q	q1	q2	r	r1	x1	Peso Weight Poids
KS 80/6-219F A2 S1	2,2	960	112	70	1000	800	100	540	490	440	10	16	965	146

KS 80/6-220.2.19

Con riserva di variazioni tecniche e costruttive senza preavviso.

With reserve of technical and constructive variations without warning. Avec réserve de variations techniques et constructives sans préavis

**POMPE ROTOMECC srl** - 20063 CERNUSCO SUL NAVIGLIO (MI) - ITALY - Via Ponchielli, 1

Tel. +39.02.9211.0205 - +39.02.9233.0399 Fax 02 9211.0630 Sito Internet: [www.pomperotomec.it](http://www.pomperotomec.it) E-mail: [sales@pomperotomec.it](mailto:sales@pomperotomec.it)



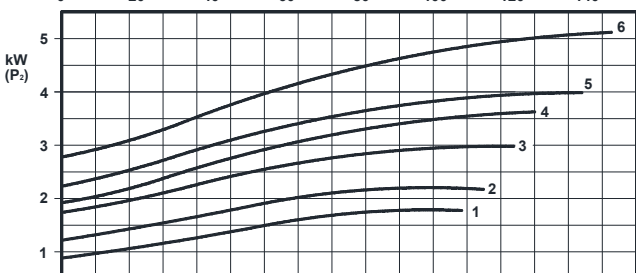
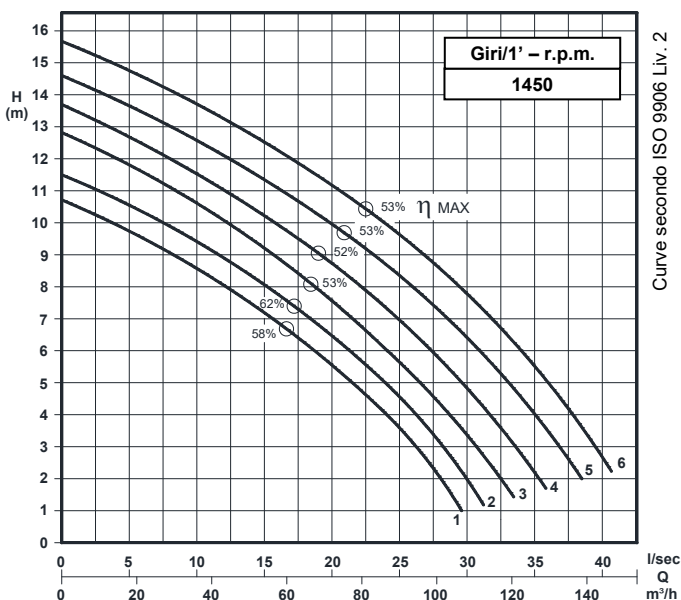
# POMPE ROTOMECC

Elettropompe centrifughe ad asse orizzontale con girante arretrata a vortice  
Centrifugal horizontal pumps with vortex impeller  
Pompes à axe horizontal avec roue vortex

## KS 80/4-220.1

### DN 80

Giri/1' - r.p.m.  
1450



### Grandezza - Size - Group 80/220

Curva Curve Courbe N°	Pompa Pump Pompe	DN	Potenza motore Motor power Puissance du moteur P2 (Kw)	Giri/1' r.p.m.	Passaggio libero Free passage Section de passage
1	KS 80-180F2 A1 S1	80	2,2	1450	70
2	KS 80-188F2 A1 S1				
3	KS 80-209F2 A1 S1				
4	KS 80-214F2 A1 S1				
5	KS 80-219F2 A1 S1				
6	KS 80-219F3 A2 S1				

P2 - Potenza resa - Shaft power - Puissance sur arbre

### COSTRUZIONE - Materials - Matériaux

Fusioni principali - Principal parts - Parts principal	Ghisa - Cast iron - Fonte - GG 25
Girante - Impeller - Roue	Ghisa - Cast iron - Fonte - GG 25
Albero - Shaft - Arbre	AISI 420
Viteria - Screws - Vis	AISI 304

### TENUTE MECCANICHE - Mechanical seals - Garniture mécanique

Doppia tenuta meccanica in bagno d'olio - Double mechanical seals in oil bath - Double garniture mécanique en chambre d'huile

Tenuta lato motore / tenuta lato liquido : carburo di silicio

Motor side / liquid side mechanical seal : silicon carbide

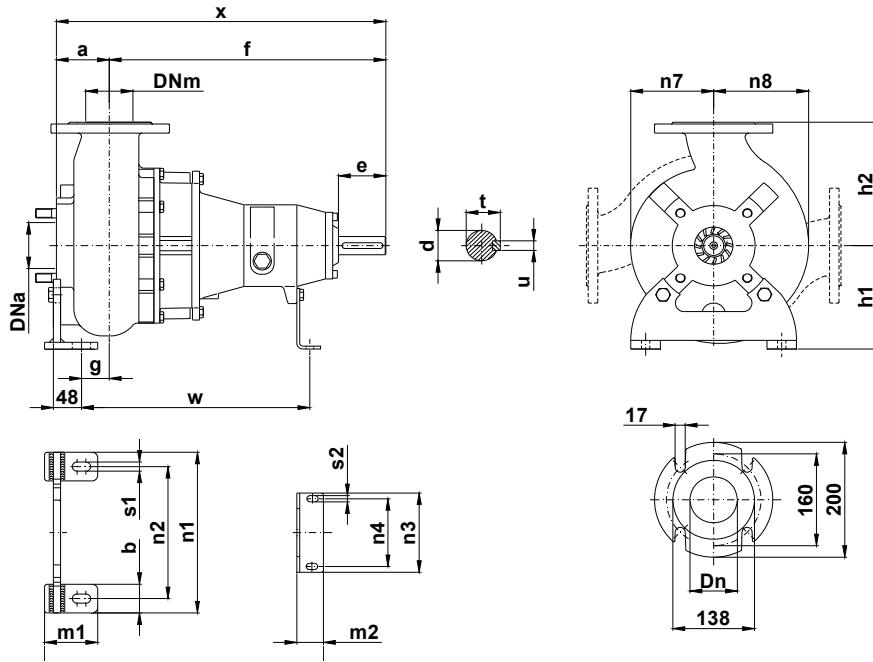
Garniture mécanique côté du moteur / côté liquide : carbure de silicium

### CARATTERISTICHE TECNICHE - Technical Features - Caractéristiques Techniques

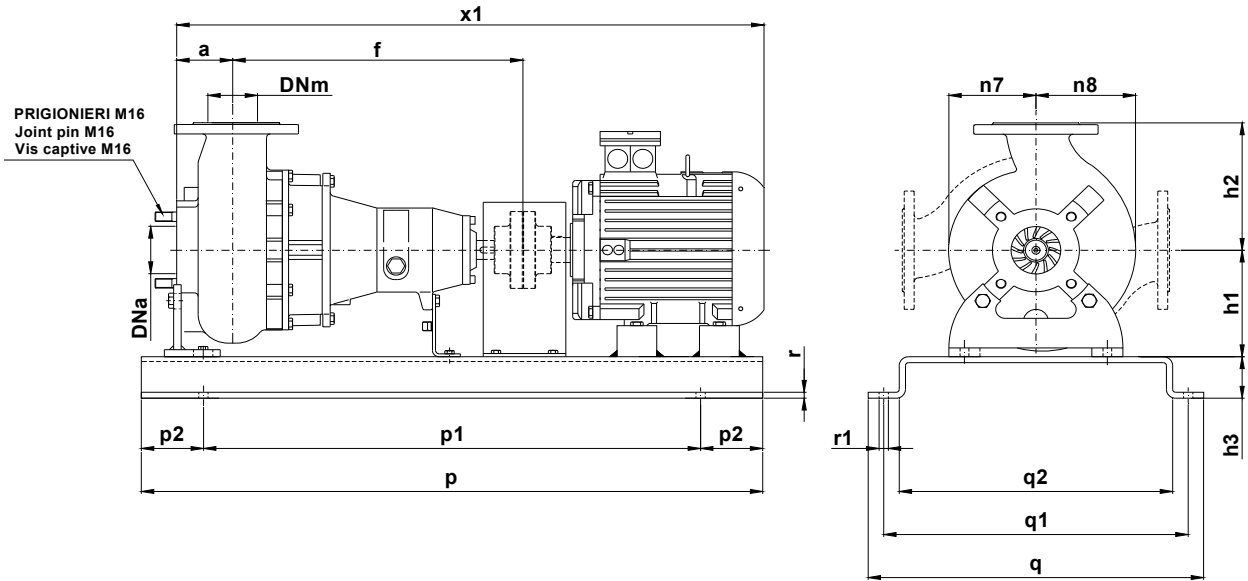
Max. temperatura liquido - Max. liquid temp. - Max. temperature du liquide : 60°C

pH Liquido pompato - pH pumped liquid - pH du liquide pompé : 6 - 10

## DIMENSIONI DI INGOMBRO – Dimensions



Pompa Pump Pompe	DNa DNm	a	b	c	d	e	f	g	h1	h2	m1	m2	n1	n2	n3	n4	n7	n8	s1	s2	t	u	v	w	x	Peso Weight Poids
KS 80 / .. A1S1 KS 80 / .. A2S1	80	90	50	12	32	80	467	49	180	215	75	45	280	230	120	90	140	160	16	11	35	10	456	392	557	68



Pompa Pump Pompe	kW	Giri/1' r.p.m.	Motore Motor - Moteur MEC	h3	p	p1	p2	q	q1	q2	r	r1	x1	Peso Weight Poids
KS 80-180F2 A1 S1	2,2	1450	100	70	1000	800	100	540	490	440	10	16	945	134
KS 80-188F2 A1 S1														136
KS 80-209F2 A1 S1	3	1450	112	90	1200	1000	100	560	510	440	12	18	1075	146
KS 80-214F2 A1 S1	4													219
KS 80-219F2 A1 S1	5,5													
KS 80-219F3 A2 S1	5,5													

KS 80/4-220.1.19

Con riserva di variazioni tecniche e costruttive senza preavviso.

With reserve of technical and constructive variations without warning. Avec réserve de variations techniques et constructives sans préavis

**POMPE ROTOMECC s.r.l.** - 20063 CERNUSCO SUL NAVIGLIO (MI) - ITALY - Via Ponchielli, 1

Tel. +39.02.9211.0205 - +39.02.9233.0399 Fax 02.9211.0630 Sito Internet: [www.pomperotomec.it](http://www.pomperotomec.it) E-mail: [sales@pomperotomec.it](mailto:sales@pomperotomec.it)



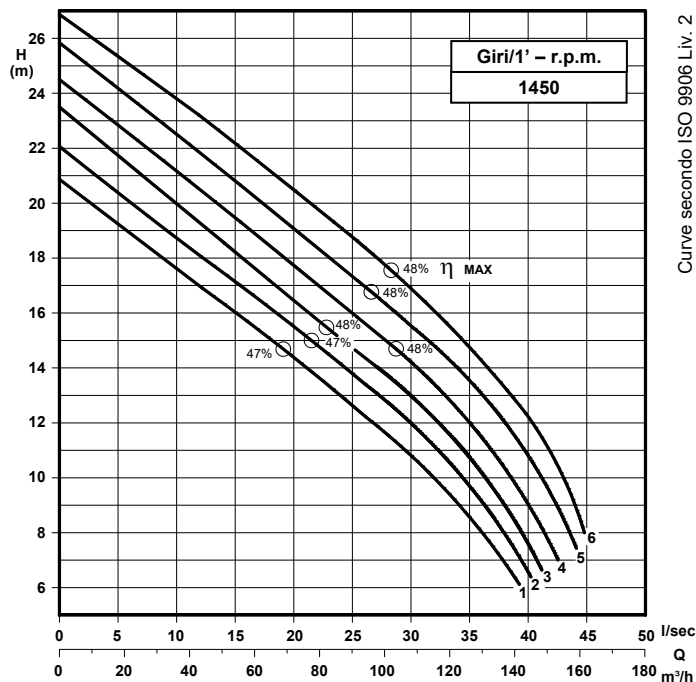
# POMPE ROTOMECC

Elettropompe centrifughe ad asse orizzontale con girante arretrata a vortice  
*Centrifugal horizontal pumps with vortex impeller*  
*Pompes à axe horizontal avec roue vortex*

## KS 80/4-280.1

### DN 80

Giri/1' - r.p.m.  
**1450**



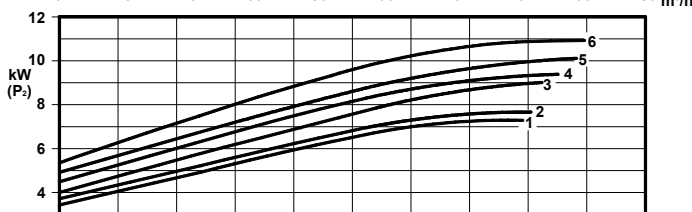
Curve secondo ISO 9906 Liv. 2



### Grandezza - Size - Group 80/280

Curva Curve Courbe N°	Pompa Pump Pompe	DN	Potenza motore Motor power Puissance du moteur P2 (Kw)	Giri/1' r.p.m.	Passaggio libero Free passage Section de passage
1	KS 80-235F4 A3 S2	80	7,5	1450	70
2	KS 80-242F4 A3 S2				
3	KS 80-250F4 A3 S2		11		
4	KS 80-255F4 A3 S2				
5	KS 80-262F4 A3 S2				
6	KS 80-270F4 A3 S2				

P2 - Potenza resa - Shaft power - Puissance sur arbre



### COSTRUZIONE - Materials - Matériaux

Fusioni principali - Principal parts - Parts principal	Ghisa - Cast iron - Fonte - GG 25
Girante - Impeller - Roue	Ghisa - Cast iron - Fonte - GS 500
Albero - Shaft - Arbre	AISI 420
Viteria - Screws - Vis	AISI 304

### TENUTE MECCANICHE - Mechanical seals - Garniture mécanique

Doppia tenuta meccanica in bagno d'olio - Double mechanical seals in oil bath -  
*Double garniture mécanique en chambre d'huile*

Tenuta lato motore / tenuta lato liquido : carburo di silicio

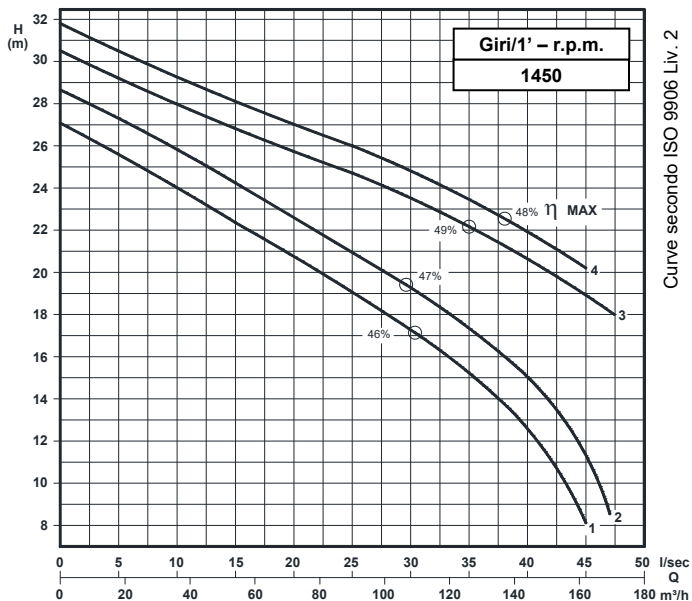
Motor side / liquid side mechanical seal : silicon carbide

Garniture mécanique côté du moteur / côté liquide : carbure de silicium

### CARATTERISTICHE TECNICHE - Technical Features - Caractéristiques Techniques

Max. temperatura liquido - Max. liquid temp. - Max. temperature du liquide : 60°C

pH Liquido pompato - pH pumped liquid - pH du liquide pompé : 6 - 10

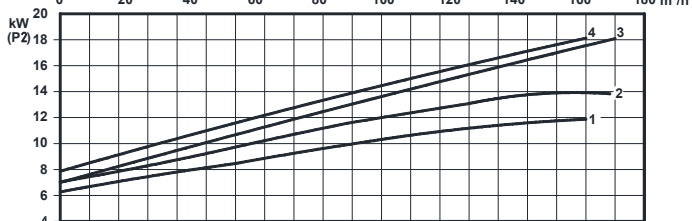


Curve secondo ISO 9906 Liv. 2

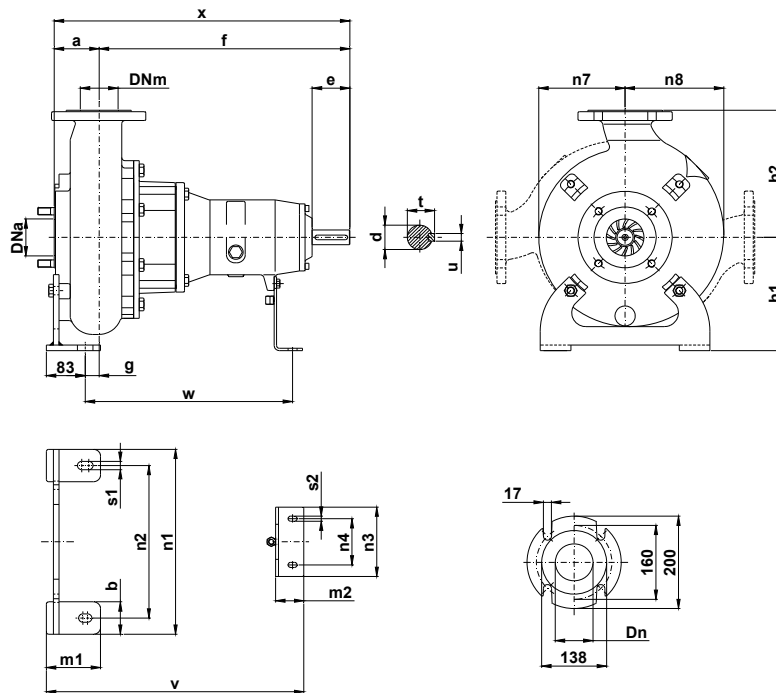
### Grandezza - Size - Group 80/280

Curva Curve Courbe N°	Pompa Pump Pompe	DN	Potenza motore Motor power Puissance du moteur P2 (Kw)	Giri/1' r.p.m.	Passaggio libero Free passage Section de passage
1	KS 80-274F4 A3 S2	80	15	1450	70
2	KS 80-279F4 A3 S2				
3	KS 80-270H A3 S2		18,5		
4	KS 80-279H A3 S2				

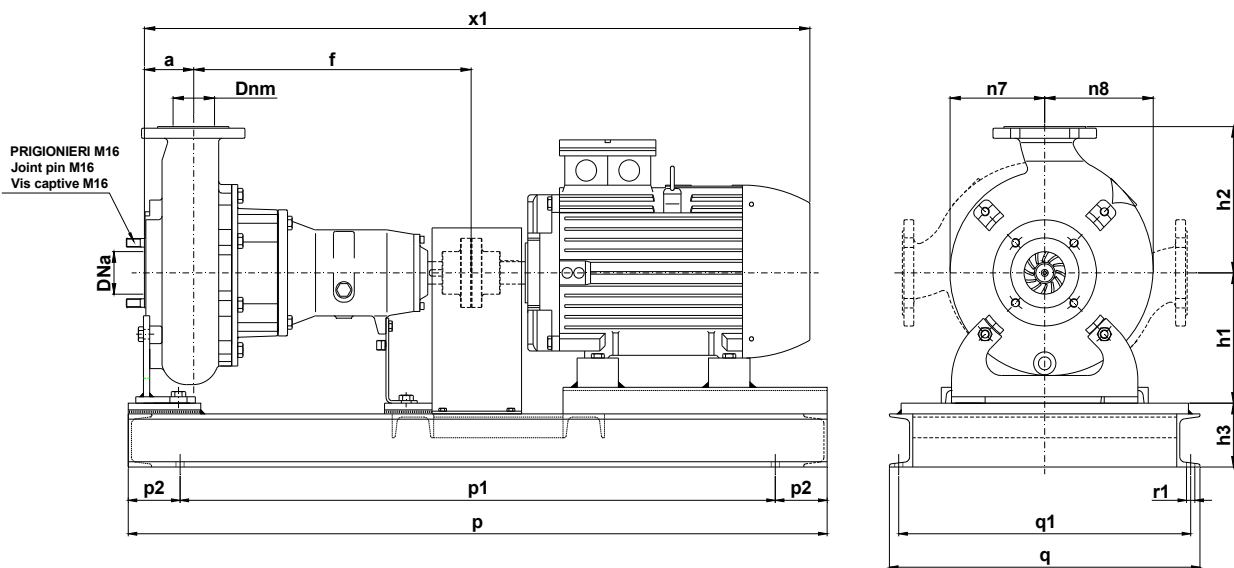
P2 - Potenza resa - Shaft power - Puissance sur arbre



## DIMENSIONI DI INGOMBRO – Dimensions



Pompa Pump Pompe	DNa DNm	a	b	c	d	e	f	g	h1	h2	m1	m2	n1	n2	n3	n4	n7	n8	s1	s2	t	u	v	w	x	Peso Weight Poids
KS 80 / .. A3S2	80	95	70	12	42	80	536	29	245	275	115	45	400	330	160	110	185	210	18	11	45	12	546	440	631	110



Pompa Pump Pompe	kW	Giri/1' r.p.m.	Motore Motor - Moteur MEC	h3	p	p1	p2	q	q1	r	r1	x1	Peso Weight Poids
KS 80-235F4 A3 S2	7,5	1450	132	90	1200	1000		560	510	12	18	1145	268
KS 80-242F4 A3 S2													
KS 80-250F4 A3 S2	11		160	120	1350	1150	100	600	564	-	18	1242	323
KS 80-255F4 A3 S2													
KS 80-262F4 A3 S2	15		180	120	1350	1150	100	600	564	-	18	1287	343
KS 80-270F4 A3 S2													
KS 80-274F4 A3 S2	18,5		180	120	1350	1150	100	600	564	-	18	1317	380
KS 80-279F4 A3 S2													
KS 80-270H A3 S2	18,5	180	120	1350	1150	100	600	564	-	18	1317	380	
KS 80-279H A3 S2													

KS 80/4-280.1.19

Con riserva di variazioni tecniche e costruttive senza preavviso.

With reserve of technical and constructive variations without warning. Avec réserve de variations techniques et constructives sans préavis

**POMPE ROTOMECC srl** - 20063 CERNUSCO SUL NAVIGLIO (MI) - ITALY - Via Ponchielli, 1

Tel. +39.02.9211.0205 - +39.02.9233.0399 Fax 02.9211.0630 Sito Internet: [www.pomperotomec.it](http://www.pomperotomec.it) E-mail: [sales@pomperotomec.it](mailto:sales@pomperotomec.it)





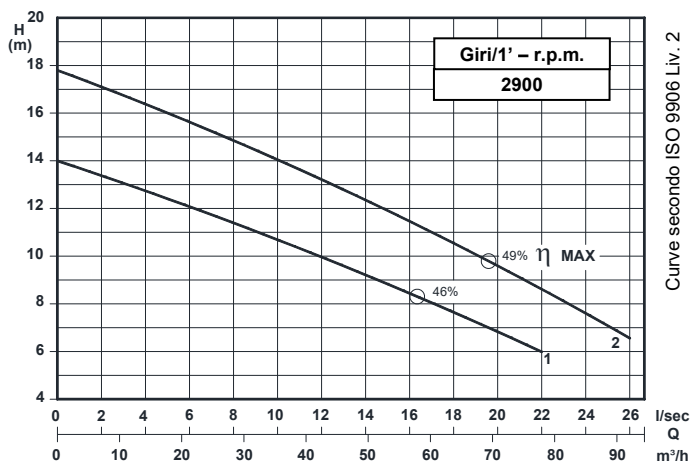
# POMPE ROTOMECC

Elettropompe centrifughe ad asse orizzontale con girante arretrata a vortice  
Centrifugal horizontal pumps with vortex impeller  
Pompes à axe horizontal avec roue vortex

## KS 80/2-220.1

### DN 80

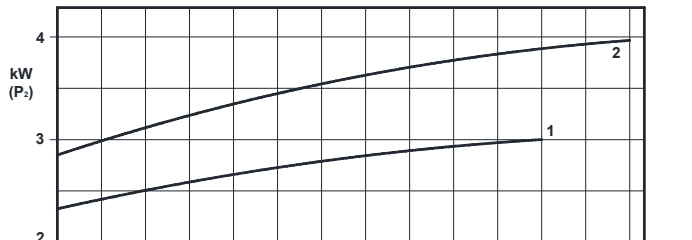
Giri/1' - r.p.m.  
2900



### Grandezza - Size - Group 80/220

Curva Curve Courbe N°	Pompa Pump Pompe	DN	Potenza motore Motor power Puissance du moteur P2 (Kw)	Giri/1' r.p.m.	Passaggio libero Free passage Section de passage
1	KS 80/2-137K1 A1 S1	80	3	2900	75
2	KS 80/2-150K1 A1 S1		4		

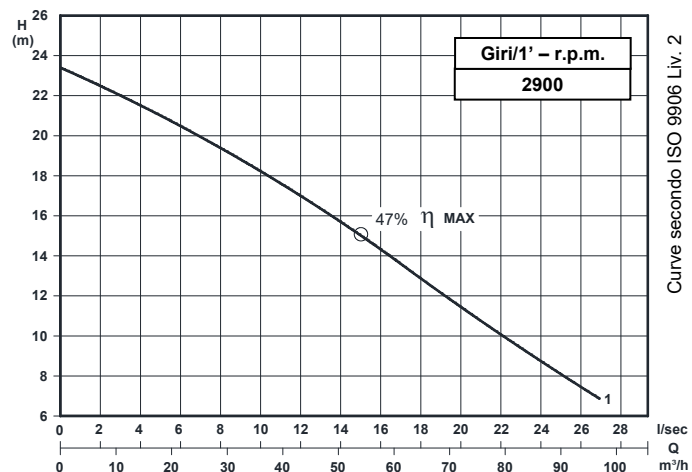
P2 - Potenza resa - Shaft power - Puissance sur arbre



COSTRUZIONE - Materials - Matériaux	
Fusioni principali - Principal parts - Parts principal	Ghisa - Cast iron - Fonte - GG 25
Girante - Impeller - Roue	Ghisa - Cast iron - Fonte - GG 25
Albero - Shaft - Arbre	AISI 420
Viteria - Screws - Vis	AISI 304

TENUTE MECCANICHE - Mechanical seals - Garniture mécanique
Doppia tenuta meccanica in bagno d'olio - Double mechanical seals in oil bath - Double garniture mécanique en chambre d'huile
Tenuta lato motore / tenuta lato liquido : carburo di silicio Motor side / liquid side mechanical seal : silicon carbide Garniture mécanique côté du moteur / côté liquide : carbure de silicium

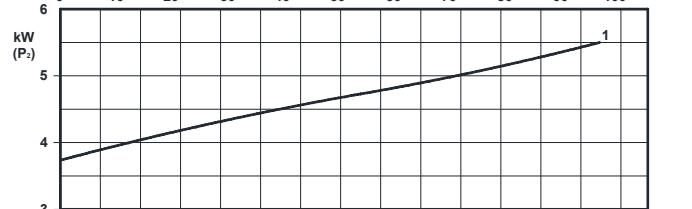
CARATTERISTICHE TECNICHE - Technical Features - Caractéristiques Techniques
Max. temperatura liquido - Max. liquid temp. - Max. temperature du liquide : 60°C
pH Liquido pompato - pH pumped liquid - pH du liquide pompé : 6 - 10



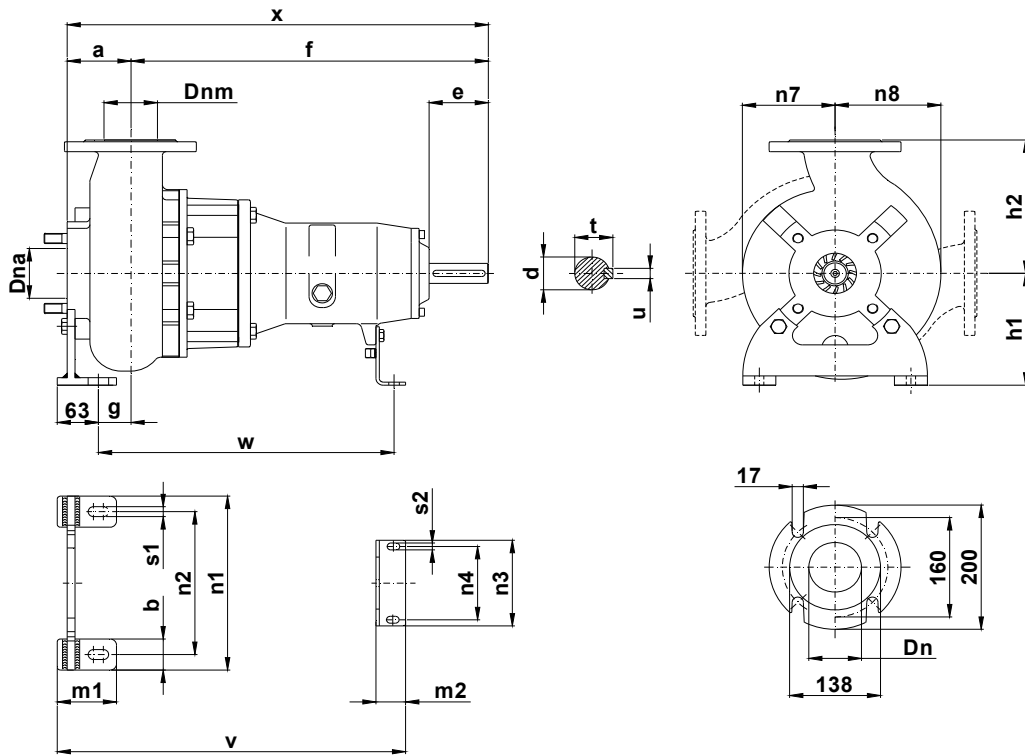
### Grandezza - Size - Group 80/220

Curva Curve Courbe N°	Pompa Pump Pompe	DN	Potenza motore Motor power Puissance du moteur P2 (Kw)	Giri/1' r.p.m.	Passaggio libero Free passage Section de passage
1	KS 80/2-165K2 A1 S1	80	5,5	2900	70

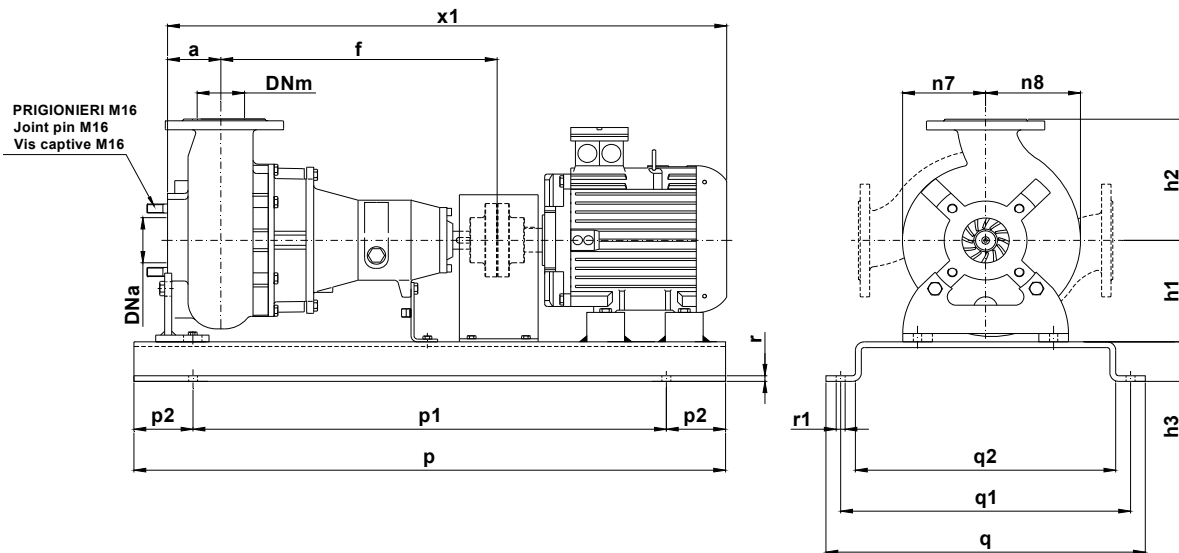
P2 - Potenza resa - Shaft power - Puissance sur arbre



**DIMENSIONI DI INGOMBRO – Dimensions**



Pompa Pump Pompe	DNa DNm	a	b	c	d	e	f	g	h1	h2	m1	m2	n1	n2	n3	n4	n7	n8	s1	s2	t	u	v	w	x	Peso Weight Poids
KS 80 / .. A1S1 KS 80 / .. A2S1	80	90	50	12	32	80	467	49	180	215	90	45	280	230	120	90	140	160	16	11	35	10	528	448	557	68



Pompa Pump Pompe	kW	Giri/1' r.p.m.	Motore Motor - Moteur MEC	h3	p	p1	p2	q	q1	q2	r	r1	x1	Peso Weight Poids
KS 80/2-137K1 A1 S1	3	2900	100	70	1000	800	100	540	490	440	10	16	945	132
KS 80/2-150K1 A1 S1	4		112										965	142
KS 80/2-165K2 A1 S1	5,5		132	90	1350	1150	560	510	12	18	975	146		

KS 80/2-220.1.19

Con riserva di variazioni tecniche e costruttive senza preavviso.

With reserve of technical and constructive variations without warning. Avec réserve de variations techniques et constructives sans préavis

**POMPE ROTOMECC srl** - 20063 CERNUSCO SUL NAVIGLIO (MI) - ITALY - Via Ponchielli, 1

Tel. +39.02.9211.0205 - +39.02.9233.0399 Fax 02 9211.0630 Sito Internet: [www.pomperotomec.it](http://www.pomperotomec.it) E-mail: [sales@pomperotomec.it](mailto:sales@pomperotomec.it)



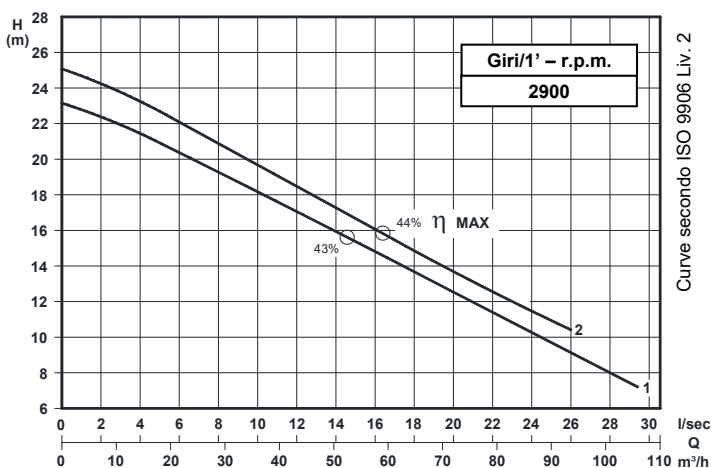
# POMPE ROTOMECC

Elettropompe centrifughe ad asse orizzontale con girante arretrata a vortice  
Centrifugal horizontal pumps with vortex impeller  
Pompes à axe horizontal avec roue vortex

## KS 80/2-220.2

### DN 80

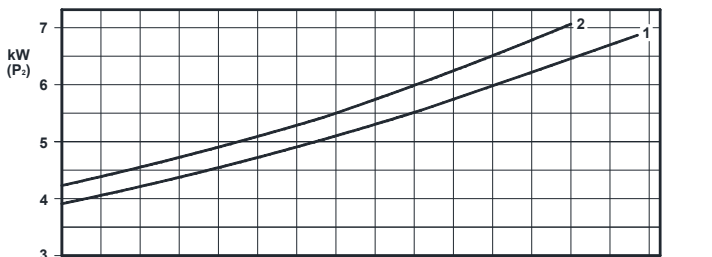
Giri/1' - r.p.m.  
2900



### Grandezza - Size - Group 80/220

Curva Curve Courbe N°	Pompa Pump Pompe	DN	Potenza motore Motor power Puissance du moteur P2 (Kw)	Giri/1' r.p.m.	Passaggio libero Free passage Section de passage
1	KS 80/2-165K3 A3 S2	80	7,5	2900	75
2	KS 80/2-170K3 A3 S2				

P2 - Potenza resa - Shaft power - Puissance sur arbre



### COSTRUZIONE - Materials - Matériaux

Fusioni principali - Principal parts - Parts principal	Ghisa - Cast iron - Fonte - GG 25
Girante - Impeller - Roue	Ghisa - Cast iron - Fonte - GG 25
Albero - Shaft - Arbre	AISI 420
Viteria - Screws - Vis	AISI 304

### TENUTE MECCANICHE - Mechanical seals - Garniture mécanique

Doppia tenuta meccanica in bagno d'olio - Double mechanical seals in oil bath - Double garniture mécanique en chambre d'huile

Tenuta lato motore / tenuta lato liquido : carburo di silicio

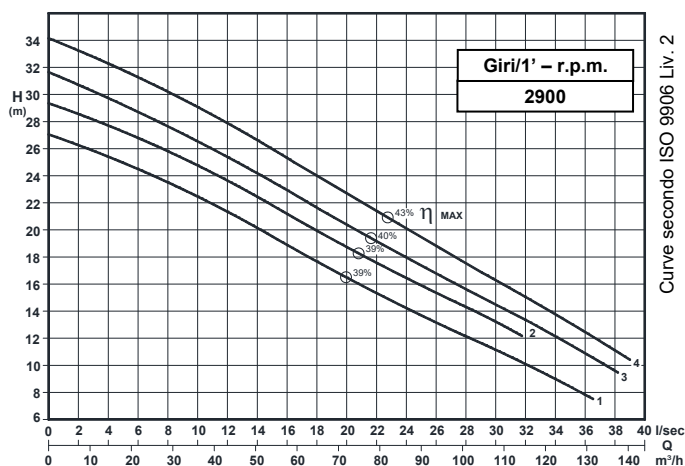
Motor side / liquid side mechanical seal : silicon carbide

Garniture mécanique côté du moteur / côté liquide : carbure de silicium

### CARATTERISTICHE TECNICHE - Technical Features - Caractéristiques Techniques

Max. temperatura liquido - Max. liquid temp. - Max. temperature du liquide : 60°C

pH Liquido pompato - pH pumped liquid - pH du liquide pompé : 6 - 10

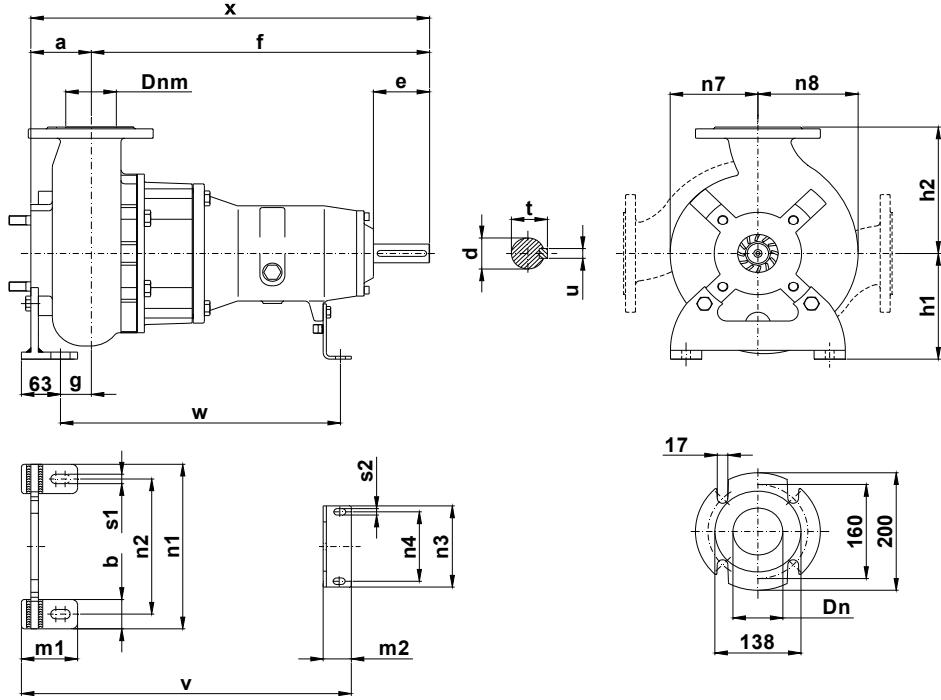


### Grandezza - Size - Group 80/220

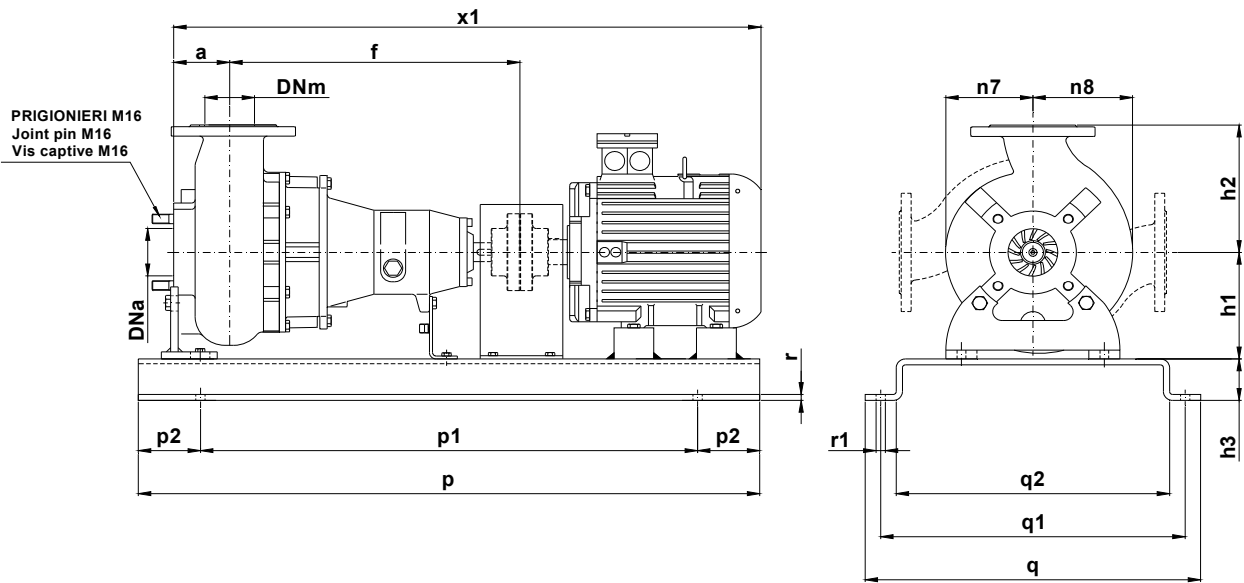
Curva Curve Courbe N°	Pompa Pump Pompe	DN	Potenza motore Motor power Puissance du moteur P2 (Kw)	Giri/1' r.p.m.	Passaggio libero Free passage Section de passage
1	KS 80/2-176K3 A3 S2	80	11	2900	75
2	KS 80/2-184K3 A3 S2				
3	KS 80/2-192K3 A3 S2		15		
4	KS 80/2-200K3 A3 S2				

P2 - Potenza resa - Shaft power - Puissance sur arbre

**DIMENSIONI DI INGOMBRO - Dimensions**



Pompa Pump Pompe	DNa DNm	a	b	c	d	e	f	g	h1	h2	m1	m2	n1	n2	n3	n4	n7	n8	s1	s2	t	u	v	w	x	Peso Weight Poids
KS 80 / .. A3S2	80	90	50	12	42	80	536	49	180	215	90	45	280	230	120	90	140	160	14	11	45	12	528	450	626	90



Pompa Pump Pompe	kW	Giri/1' r.p.m.	Motore Motor - Moteur MEC	h3	p	p1	p2	q	q1	q2	r	r1	x1	Peso Weight Poids		
KS 80/2-165K3 A3 S2	7,5	2900	132	90	1200	1000	100	560	510	440	12	18	1145	258		
KS 80/2-170K3 A3 S2								600	564	-	-				1240	308
KS 80/2-176K3 A3 S2	11	2900	160*	120	1350	1150	100	600	564	-	-	18	1240	308		
KS 80/2-184K3 A3 S2								600	564	-	-				1240	308
KS 80/2-192K3 A3 S2								600	564	-	-				1240	308
KS 80/2-200K3 A3 S2	15	2900	160*	120	1350	1150	100	600	564	-	-	18	1240	308		

\*Basamento in acciaio profilato saldato – Profiled welded steel base – Profilé de base en acier soudé

KS 80/2-220.2.19

Con riserva di variazioni tecniche e costruttive senza preavviso.

With reserve of technical and constructive variations without warning. Avec réserve de variations techniques et constructives sans préavis

**POMPE ROTOMECC s.r.l.** - 20063 CERNUSCO SUL NAVIGLIO (MI) - ITALY - Via Ponchielli, 1

Tel. +39.02.9211.0205 - +39.02.9233.0399 Fax 02 9211.0630 Sito Internet: [www.pomperotomec.it](http://www.pomperotomec.it) E-mail: [sales@pomperotomec.it](mailto:sales@pomperotomec.it)



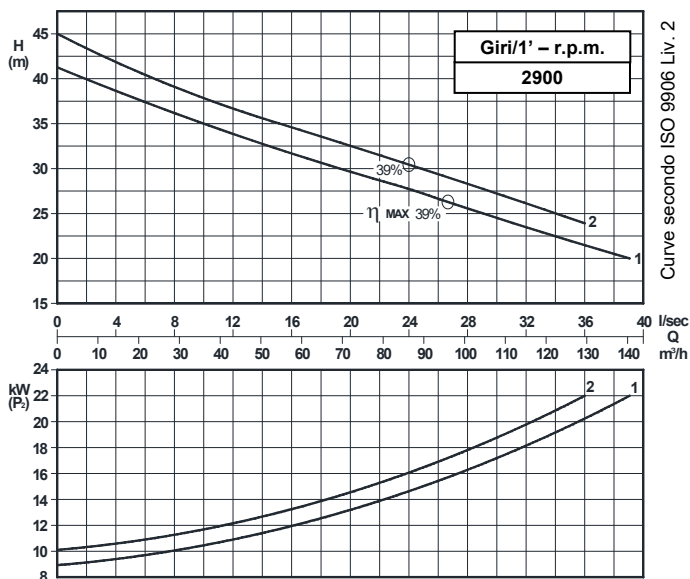
# POMPE ROTOMECC

Elettropompe centrifughe ad asse orizzontale con girante arretrata a vortice  
 Centrifugal horizontal pumps with vortex impeller  
 Pompes à axe horizontal avec roue vortex

## KS 80/2-280.1

### DN 80

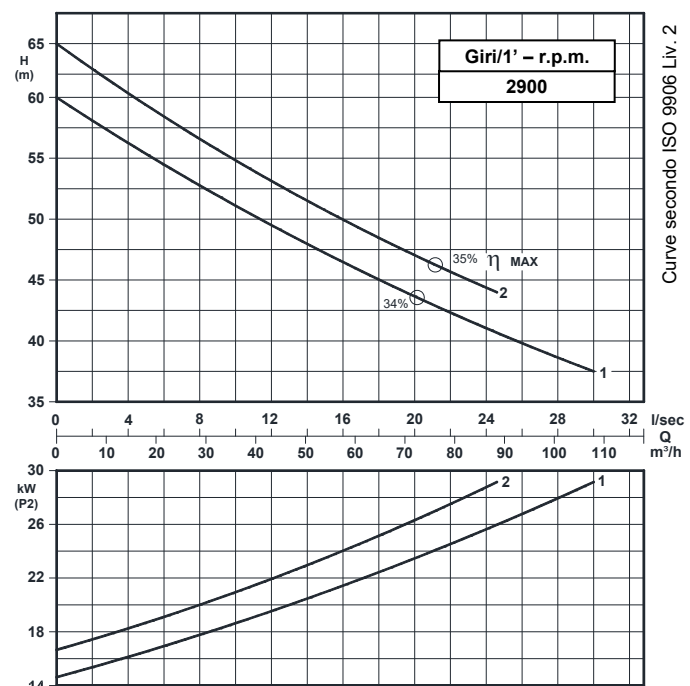
Giri/1' - r.p.m.  
**2900**



### Grandezza - Size - Group 80/280

Curva Curve Courbe N°	Pompa Pump Pompe	DN	Potenza motore Motor power Puissance du moteur P2 (Kw)	Giri/1' r.p.m.	Passaggio libero Free passage Section de passage
1	KS 80/2-200 A3 S2	80	22	2900	65
2	KS 80/2-210 A3 S2				

P2 - Potenza resa - Shaft power - Puissance sur arbre



COSTRUZIONE - Materials - Matériaux	
Fusioni principali - Principal parts - Parts principal	Ghisa - Cast iron - Fonte - GG 25
Girante - Impeller - Roue	Ghisa - Cast iron - Fonte - GG 25
Albero - Shaft - Arbre	AISI 420
Viteria - Screws - Vis	AISI 304

TENUTE MECCANICHE - Mechanical seals - Garniture mécanique
Doppia tenuta meccanica in bagno d'olio - Double mechanical seals in oil bath - Double garniture mécanique en chambre d'huile
Tenuta lato motore / tenuta lato liquido : carburo di silicio Motor side / liquid side mechanical seal : silicon carbide Garniture mécanique côté du moteur / côté liquide : carbure de silicium

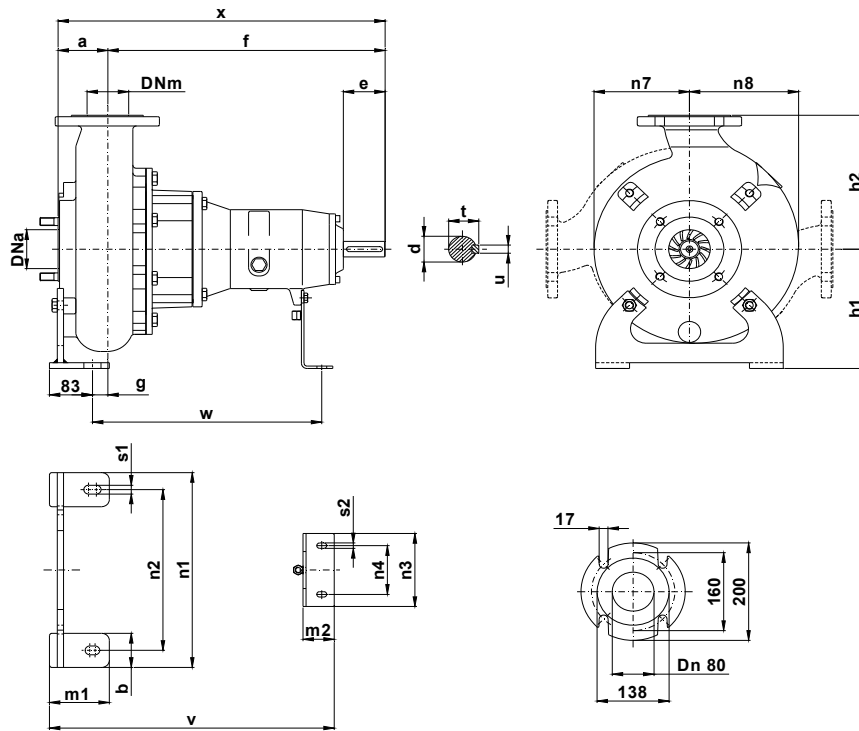
CARATTERISTICHE TECNICHE - Technical Features - Caractéristiques Techniques
Max. temperatura liquido - Max. liquid temp. - Max. temperature du liquide : 60°C
pH Liquido pompato - pH pumped liquid - pH du liquide pompé : 6 - 10

### Grandezza - Size - Group 80/280

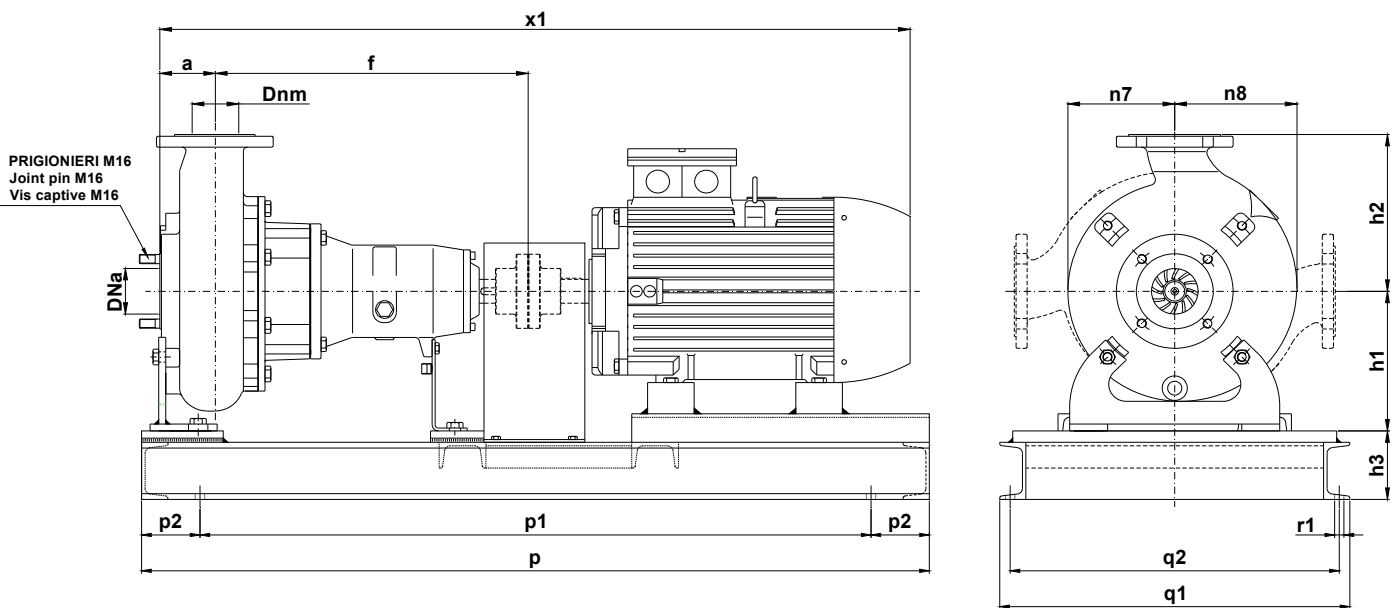
Curva Curve Courbe N°	Pompa Pump Pompe	DN	Potenza motore Motor power Puissance du moteur P2 (Kw)	Giri/1' r.p.m.	Passaggio libero Free passage Section de passage
1	KS 80/2-240 A3 S2	80	30	2900	65
2	KS 80/2-255 A3 S2				

P2 - Potenza resa - Shaft power - Puissance sur arbre

## DIMENSIONI DI INGOMBRO - Dimensions



Pompa Pump Pompe	DNa DNm	a	b	c	d	e	f	g	h1	h2	m1	m2	n1	n2	n3	n4	n7	n8	s1	s2	t	u	v	w	x	Peso Weight Poids
KS 80 /280 .. A3S2	80	95	70	12	42	80	536	49	245	275	115	45	330	400	160	110	185	210	18	11	45	12	546	440	631	110



Pompa Pump Pompe	kW	Giri/1' r.p.m.	Motore Motor - Moteur MEC	h3	p	p1	p2	q	q1	r1	x1	Peso Weight Poids
KS 80/2-200 A3 S2	22	2900	180	130	1350	1150	100	600	564	18	1173	314
KS 80/2-210 A3 S2							100	560	510			
KS 80/2-240 A3 S2	30	2900	200	120	1350	1150	100	600	564	18	1173	314
KS 80/2-255 A3 S2							100	560	510			

KS 80/2-280.1.19

Con riserva di variazioni tecniche e costruttive senza preavviso.

With reserve of technical and constructive variations without warning. Avec réserve de variations techniques et constructives sans préavis

**POMPE ROTOMECC srl** - 20063 CERNUSCO SUL NAVIGLIO (MI) - ITALY - Via Ponchielli, 1

Tel. +39.02.9211.0205 - +39.02.9233.0399 Fax 02.9211.0630 Sito Internet: [www.pomperotomec.it](http://www.pomperotomec.it) E-mail: [sales@pomperotomec.it](mailto:sales@pomperotomec.it)